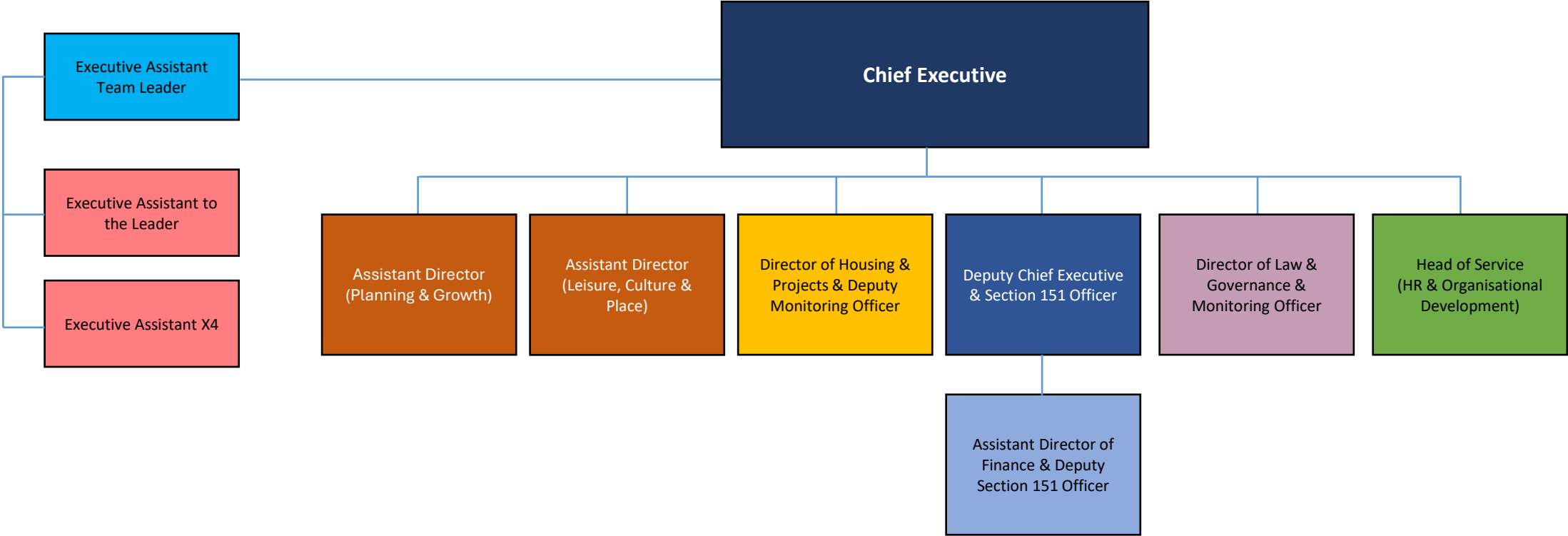
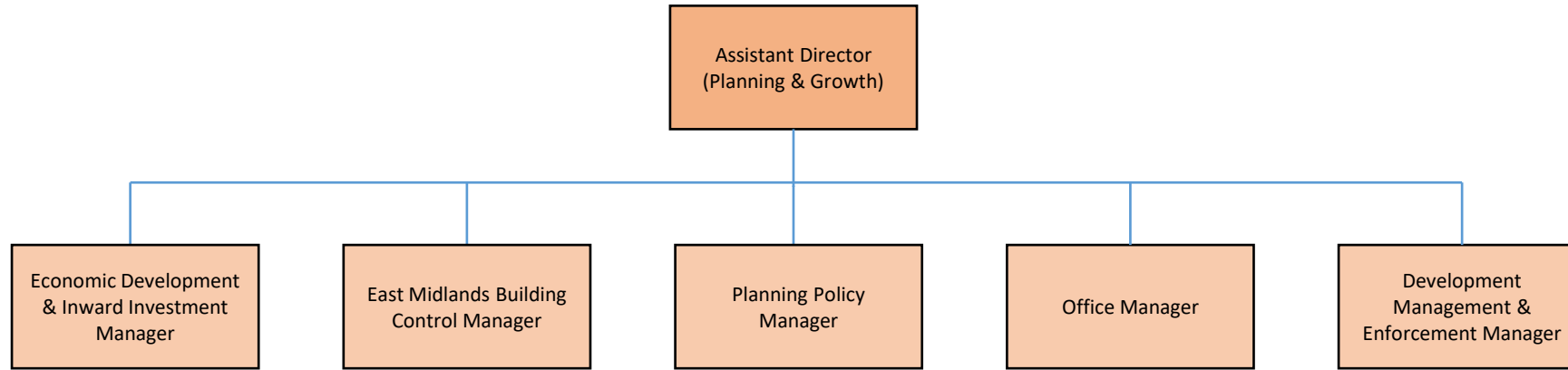


Organisational Structure as of July 2025

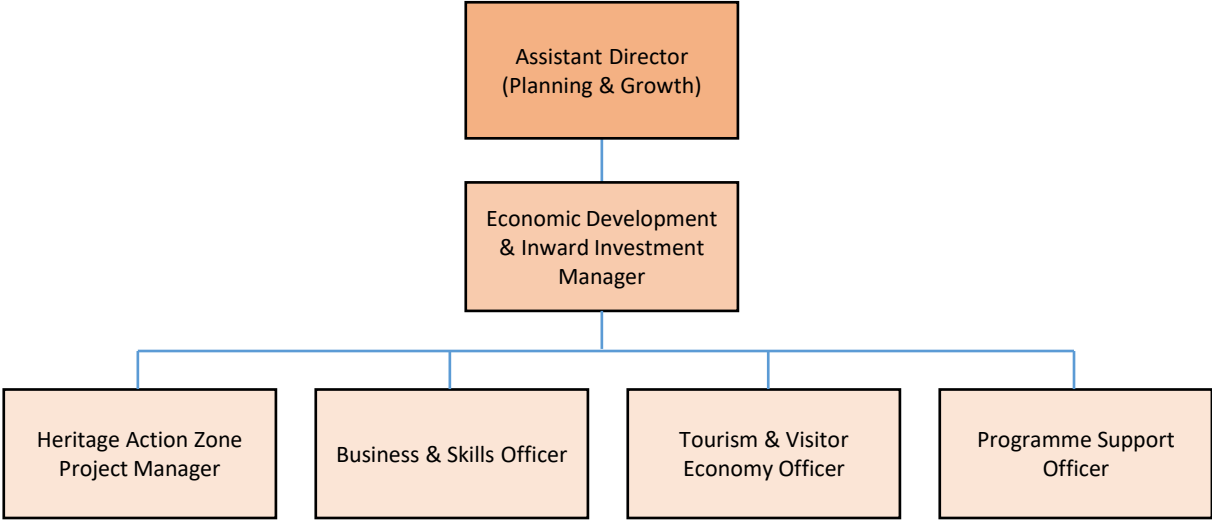


\* Please note that numbers refer to headcount & not FTE

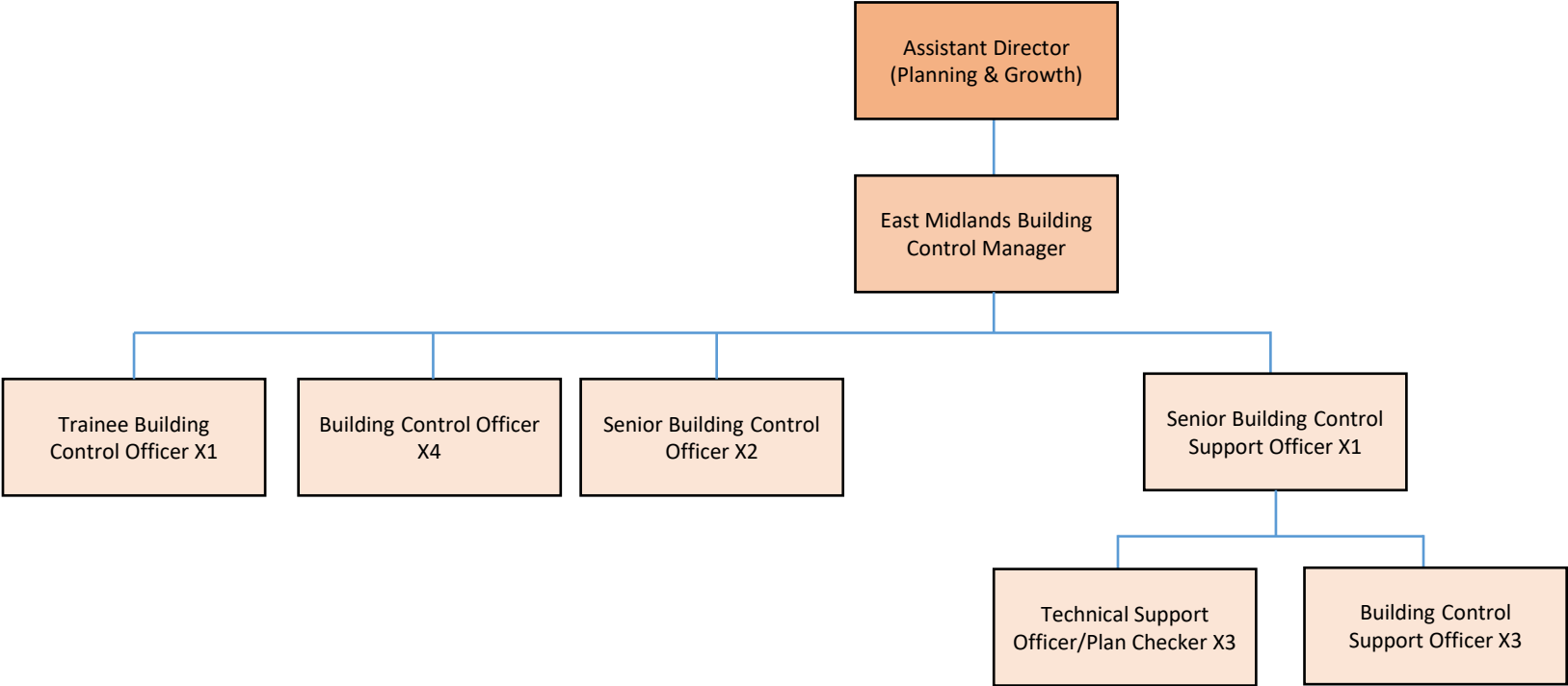




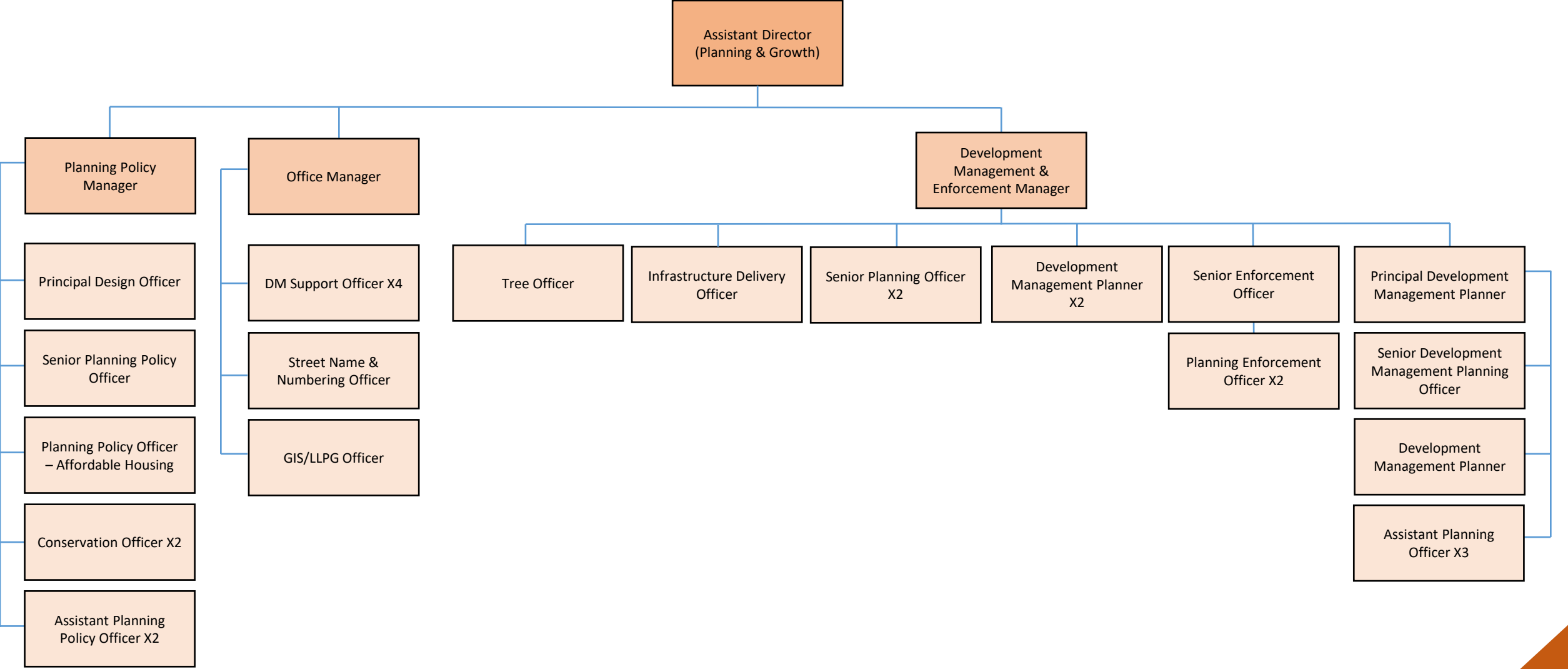
# ECONOMIC DEVELOPMENT

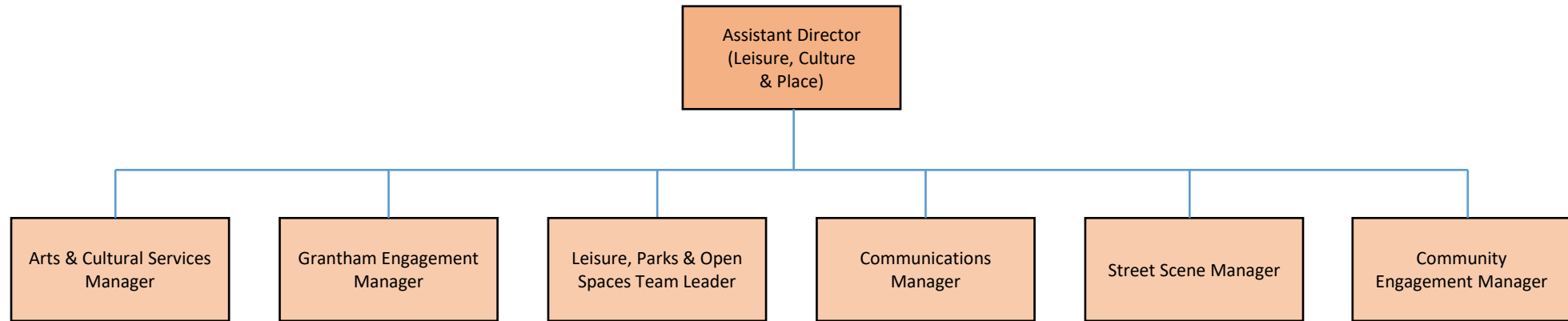


# BUILDING CONTROL

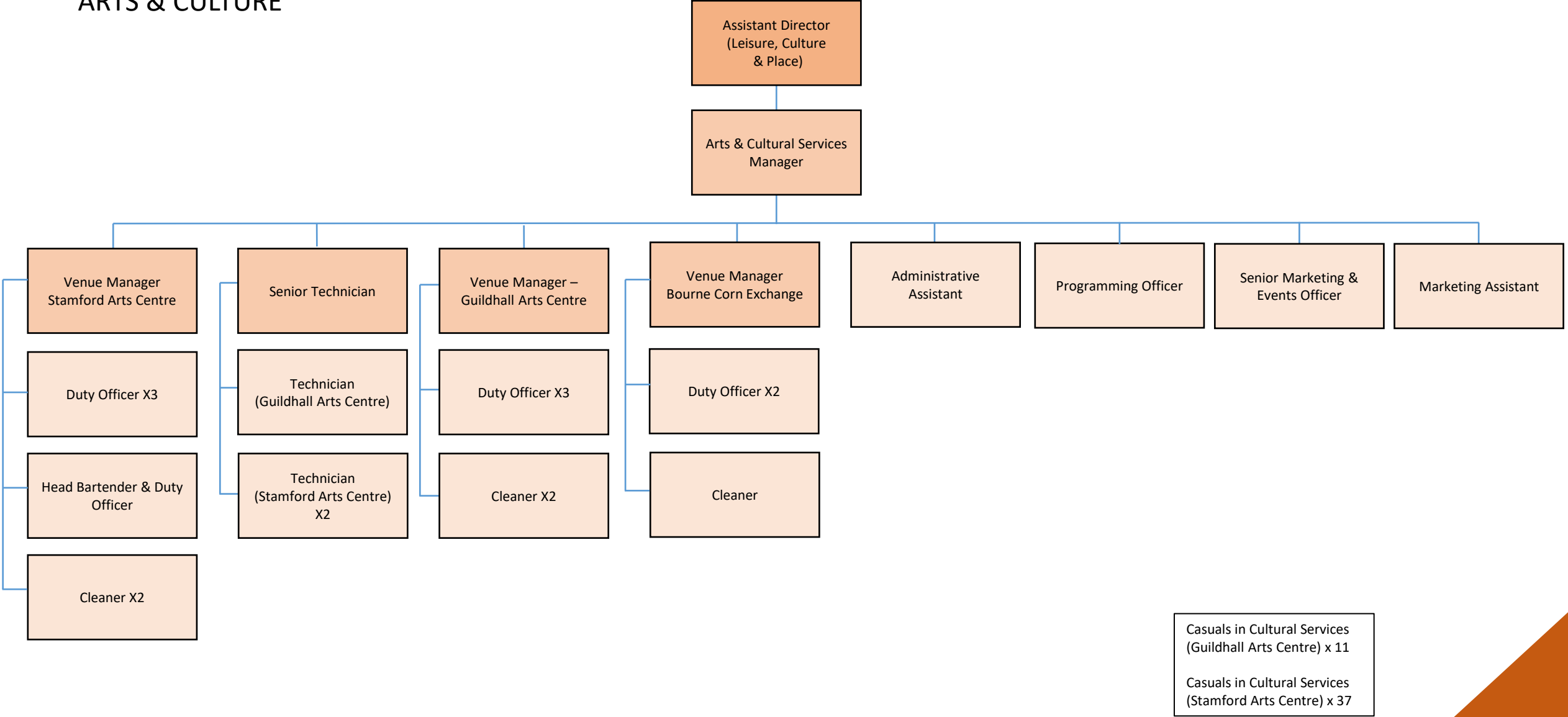


PLANNING

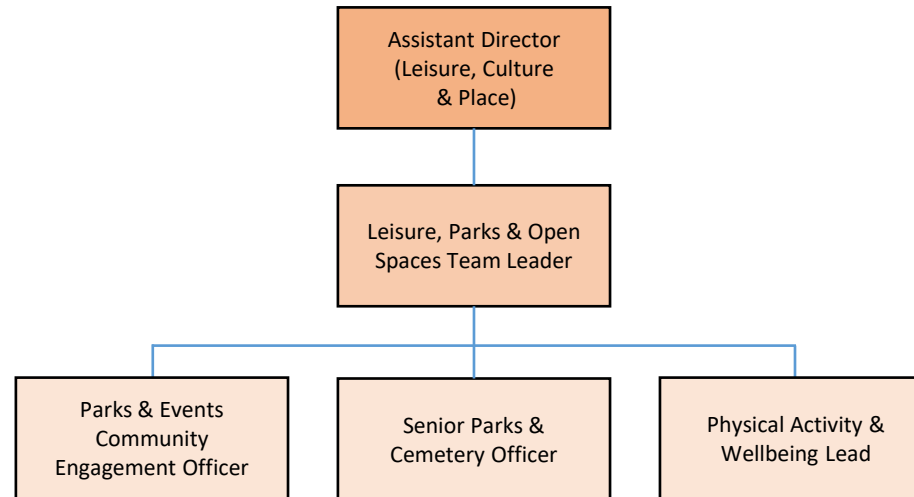




# ARTS & CULTURE

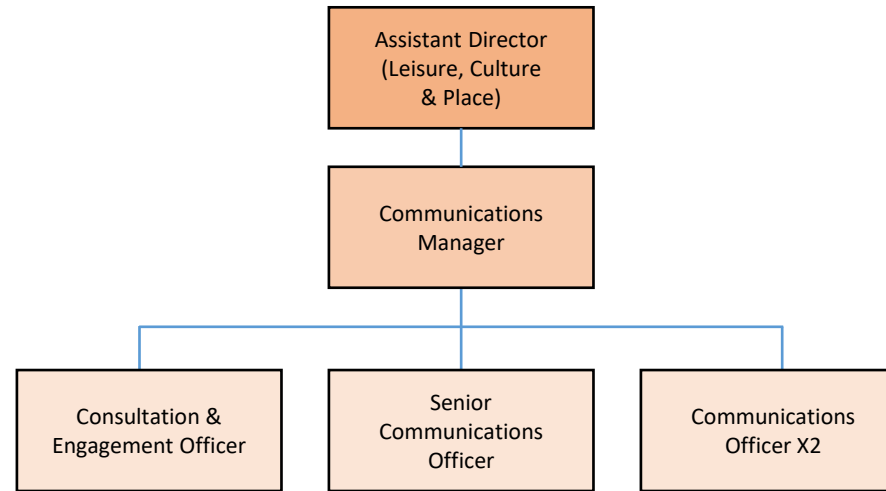


## PARKS & LEISURE

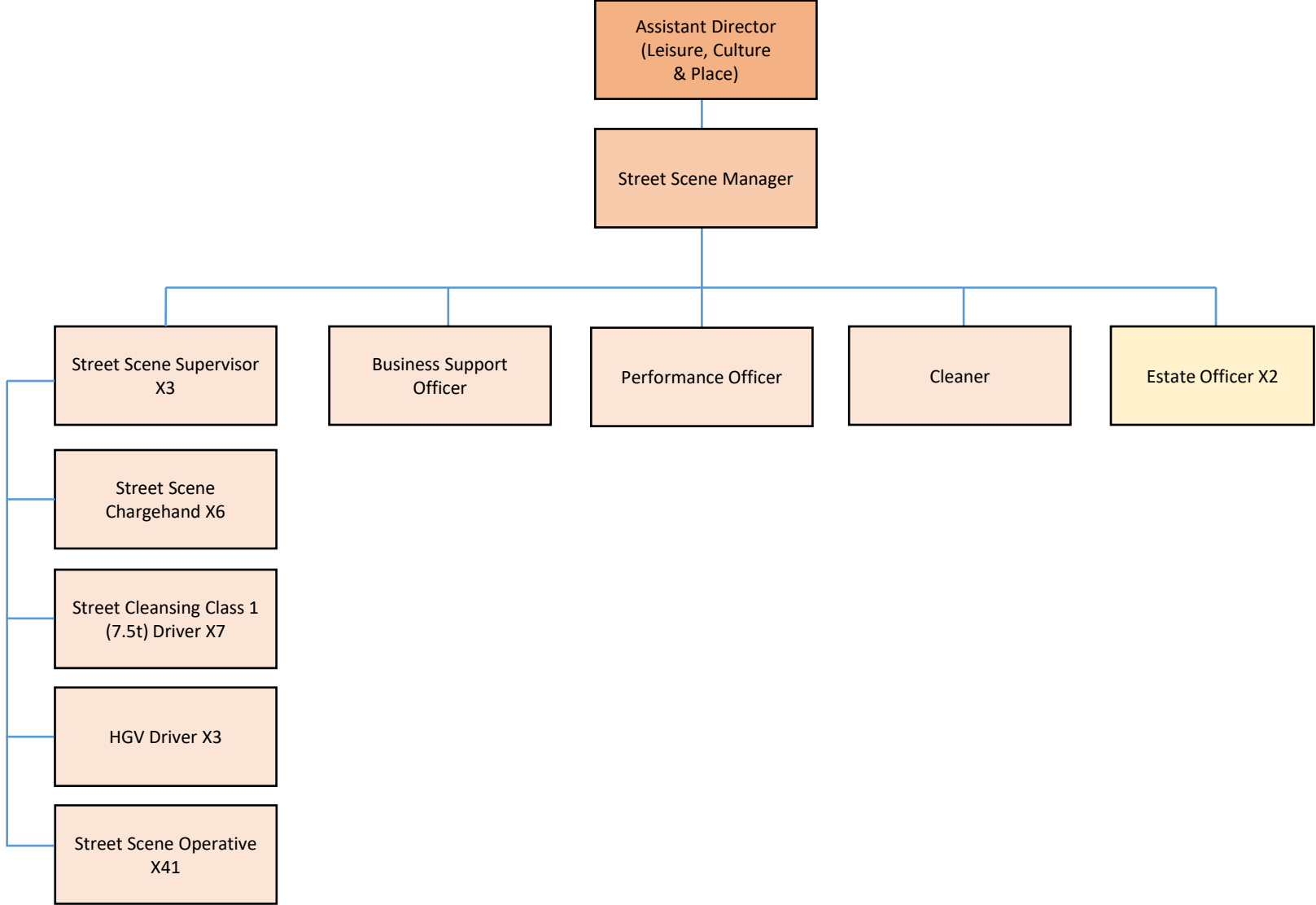




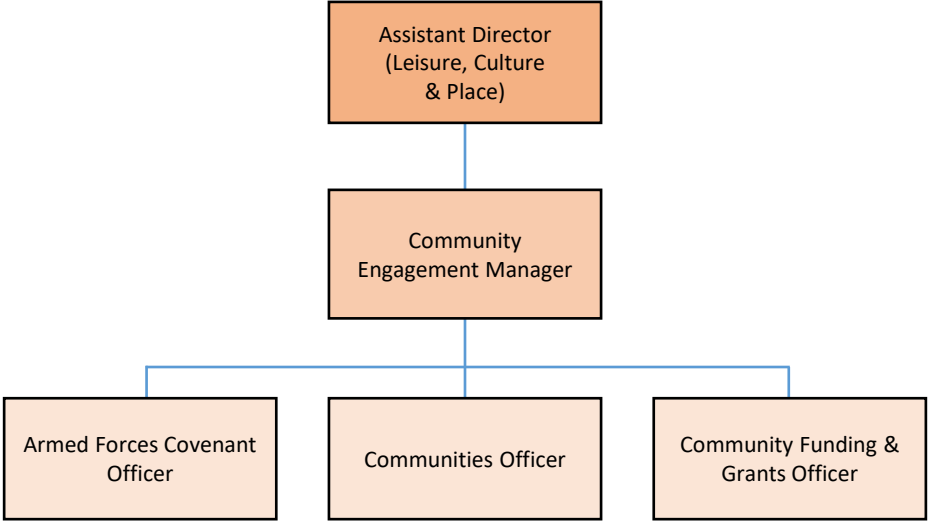
## COMMS

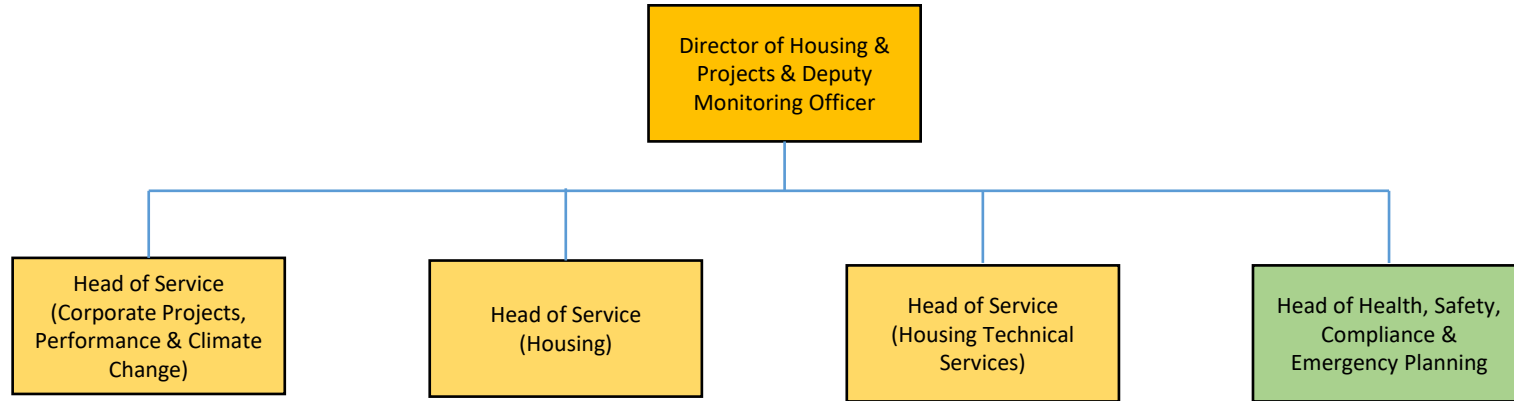


STREET SCENE

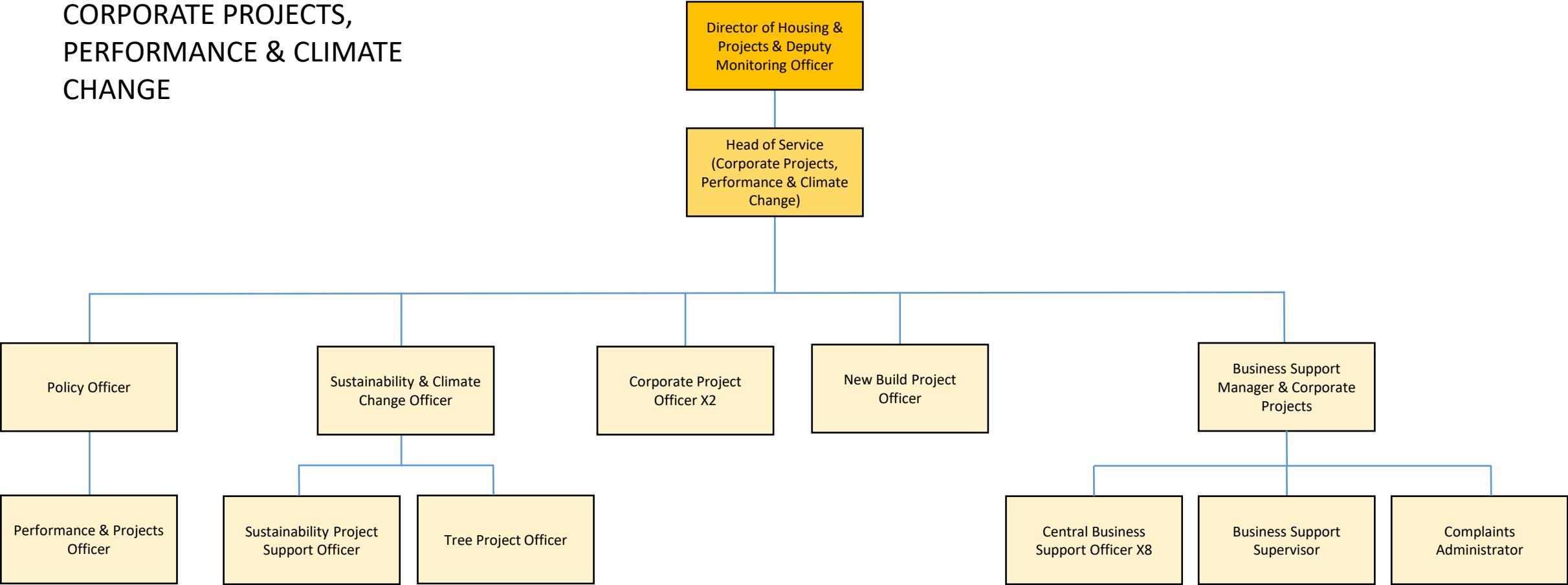


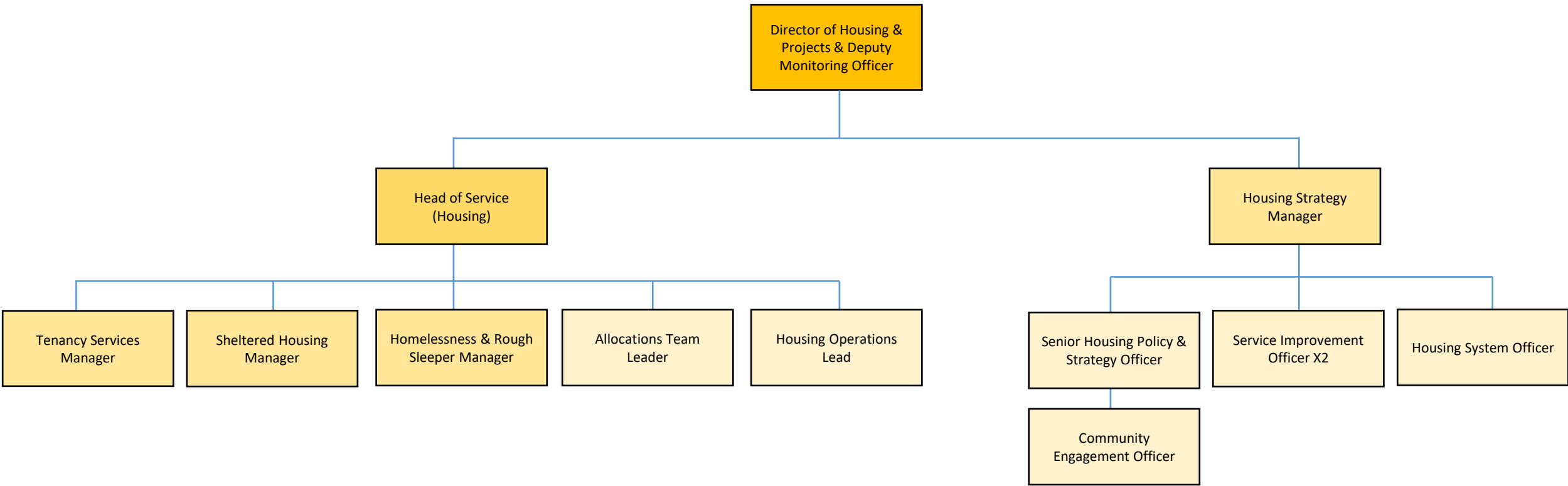
# COMMUNITY ENGAGEMENT



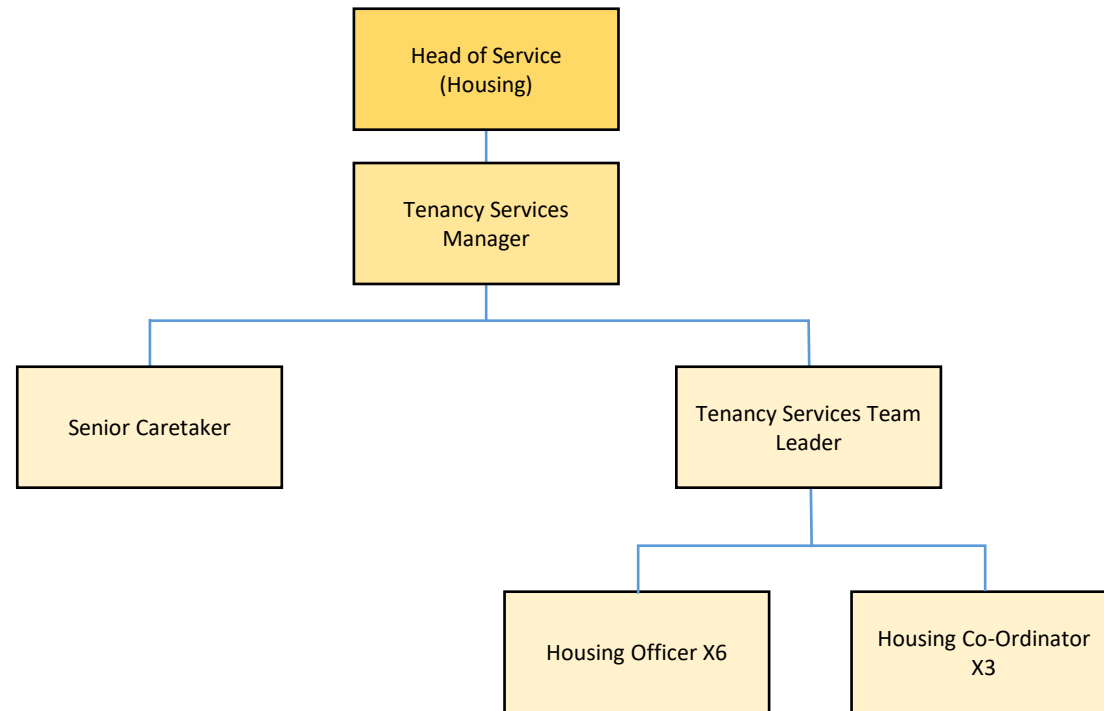


CORPORATE PROJECTS,  
PERFORMANCE & CLIMATE  
CHANGE

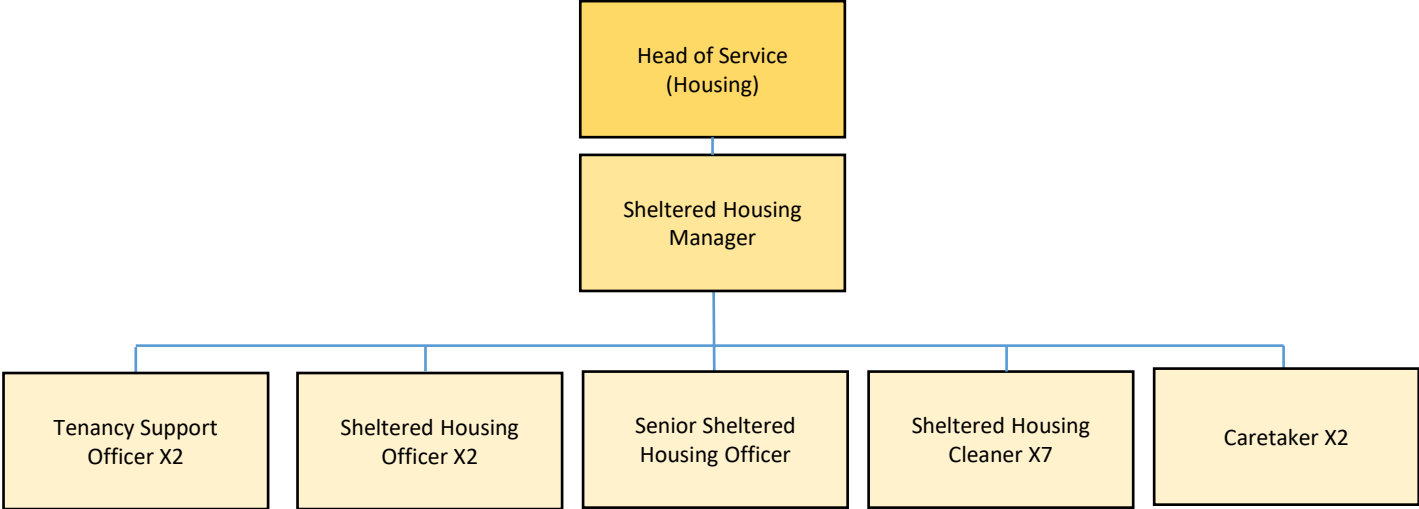




## TENANCY SERVICES

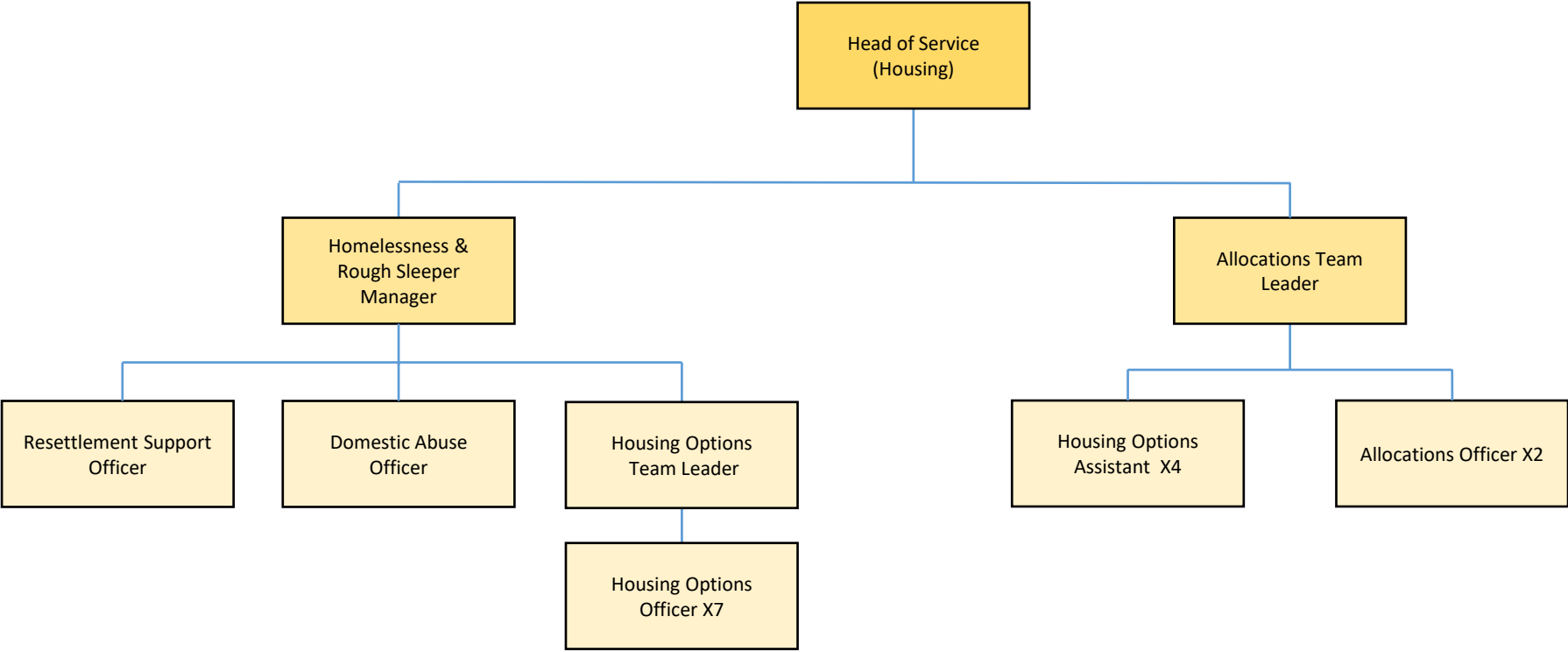


SHELTERED HOUSING

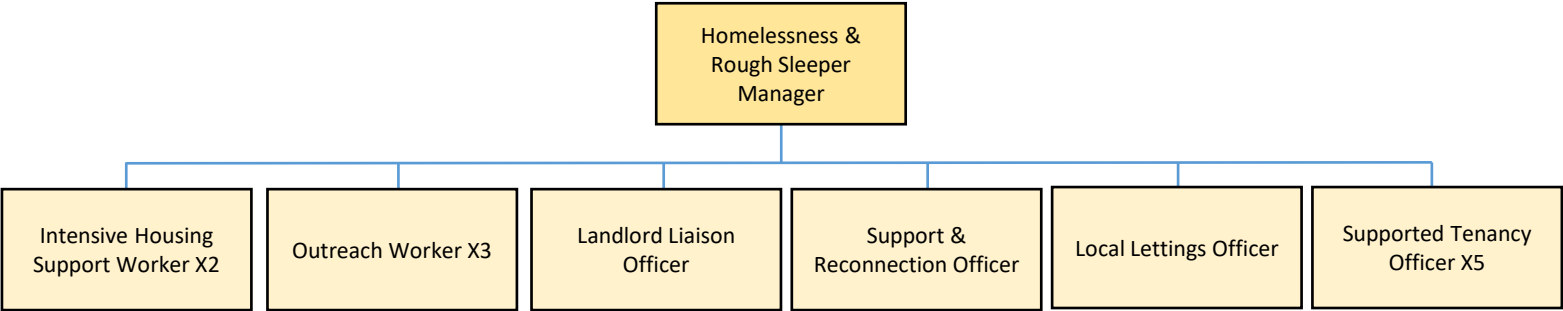




# HOUSING OPTIONS



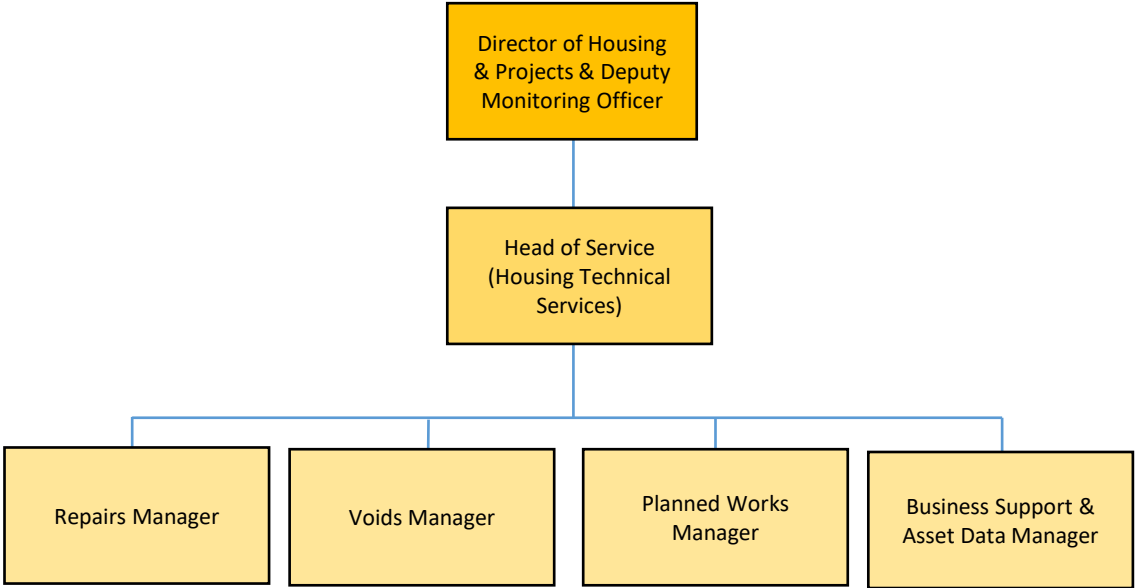
ROUGH SLEEPER INITIATIVE PROJECT  
(externally funded)



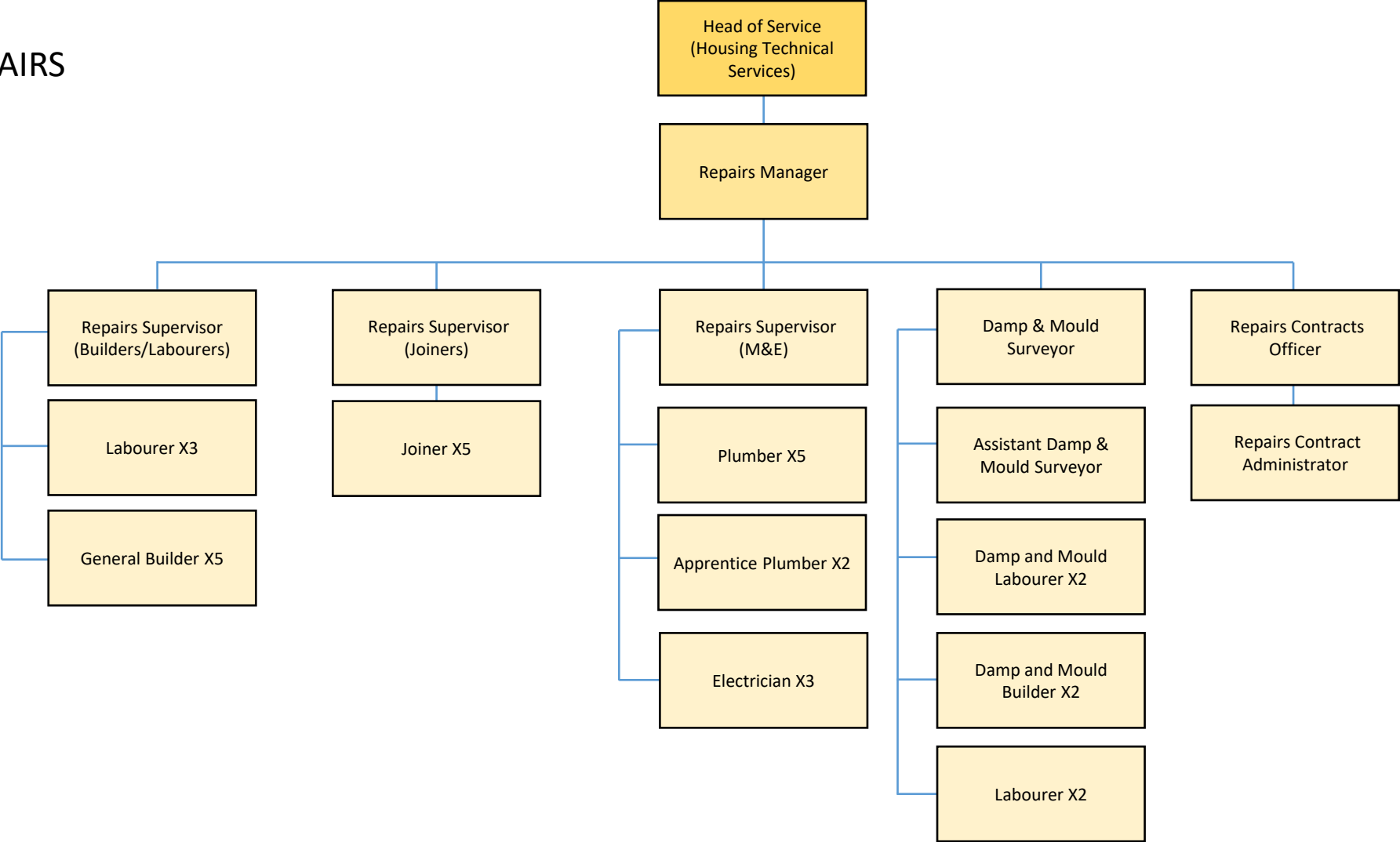
This is a partnership project of 4 Lincolnshire authorities working collaboratively to prevent rough sleeping in line with statutory responsibilities:

- North Kesteven District Council (NKDC)
- West Lindsey District Council (WLDC)
- South Holl & District Council (SHDC)
- South Kesteven District Council (SKDC)

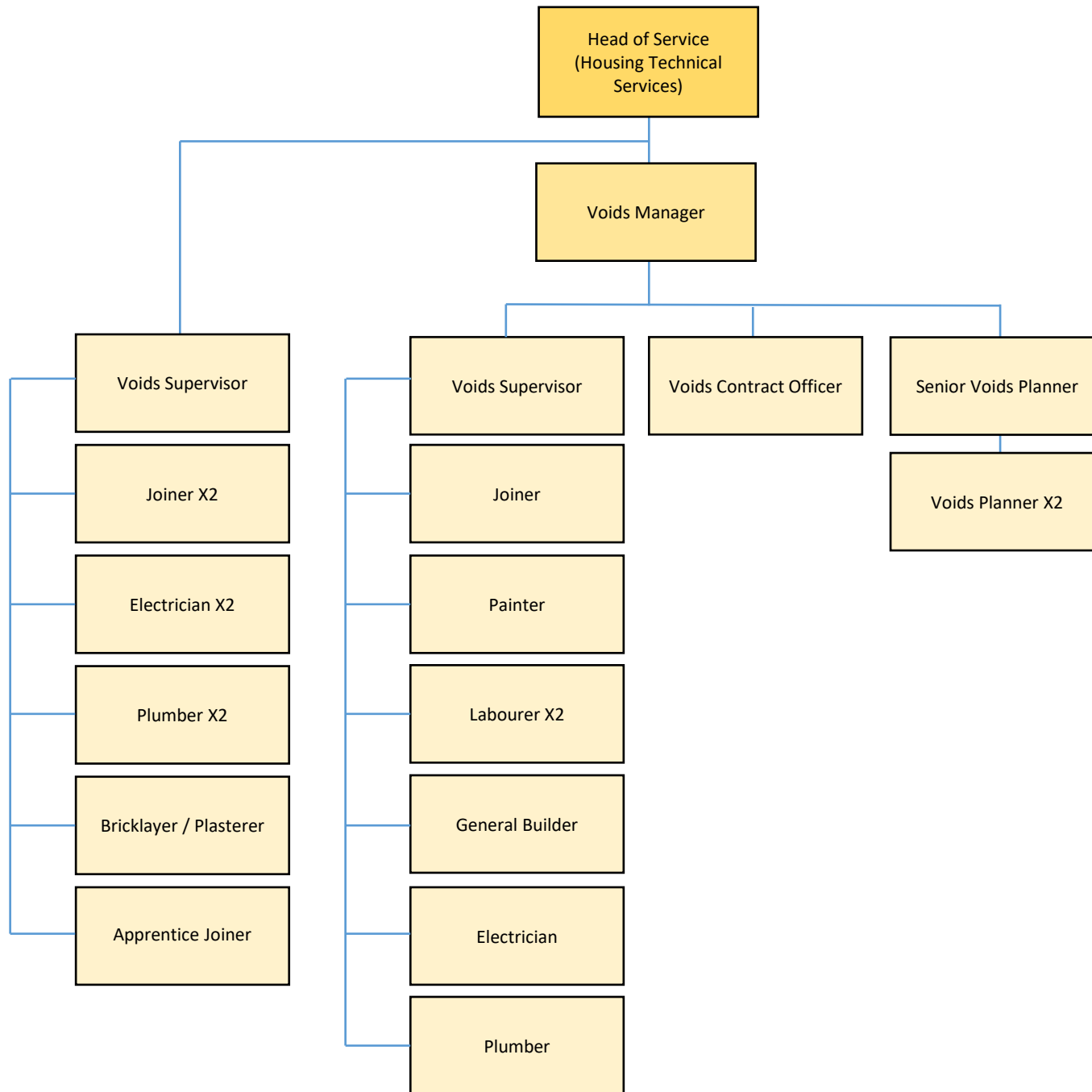
HOUSING TECHNICAL SERVICES



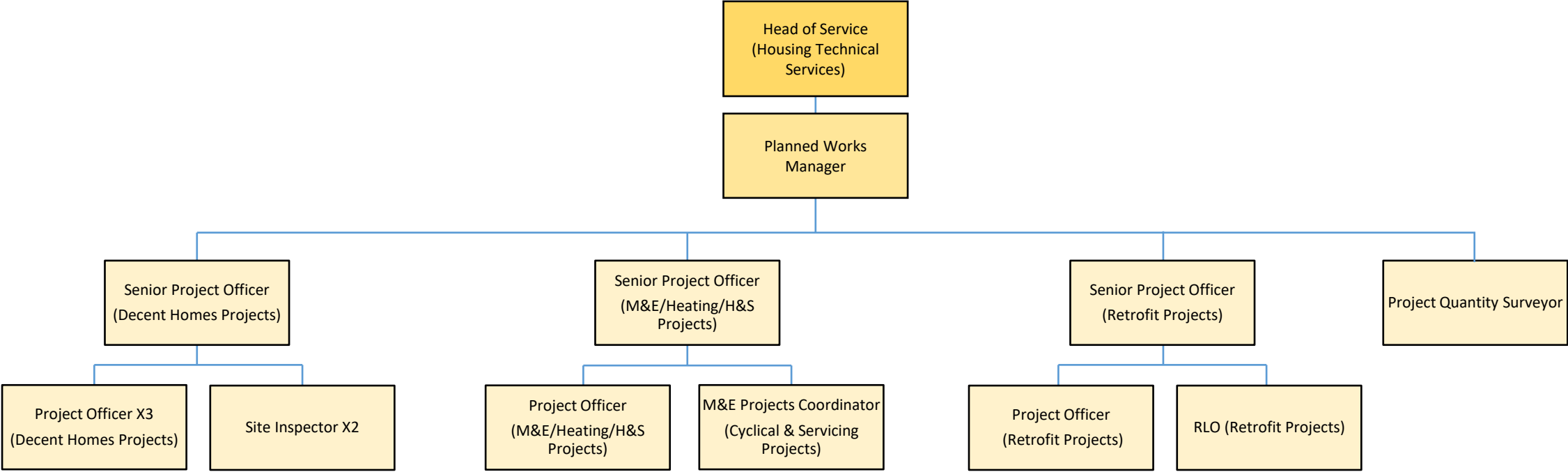
# REPAIRS



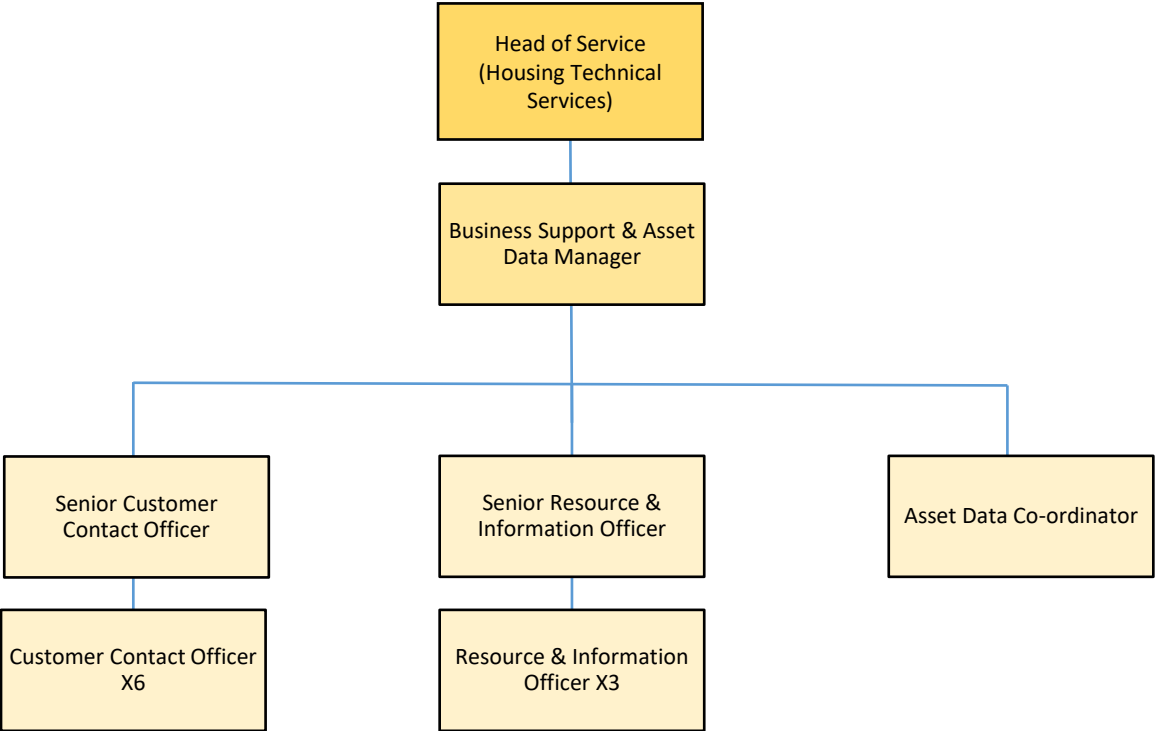
# VOIDS

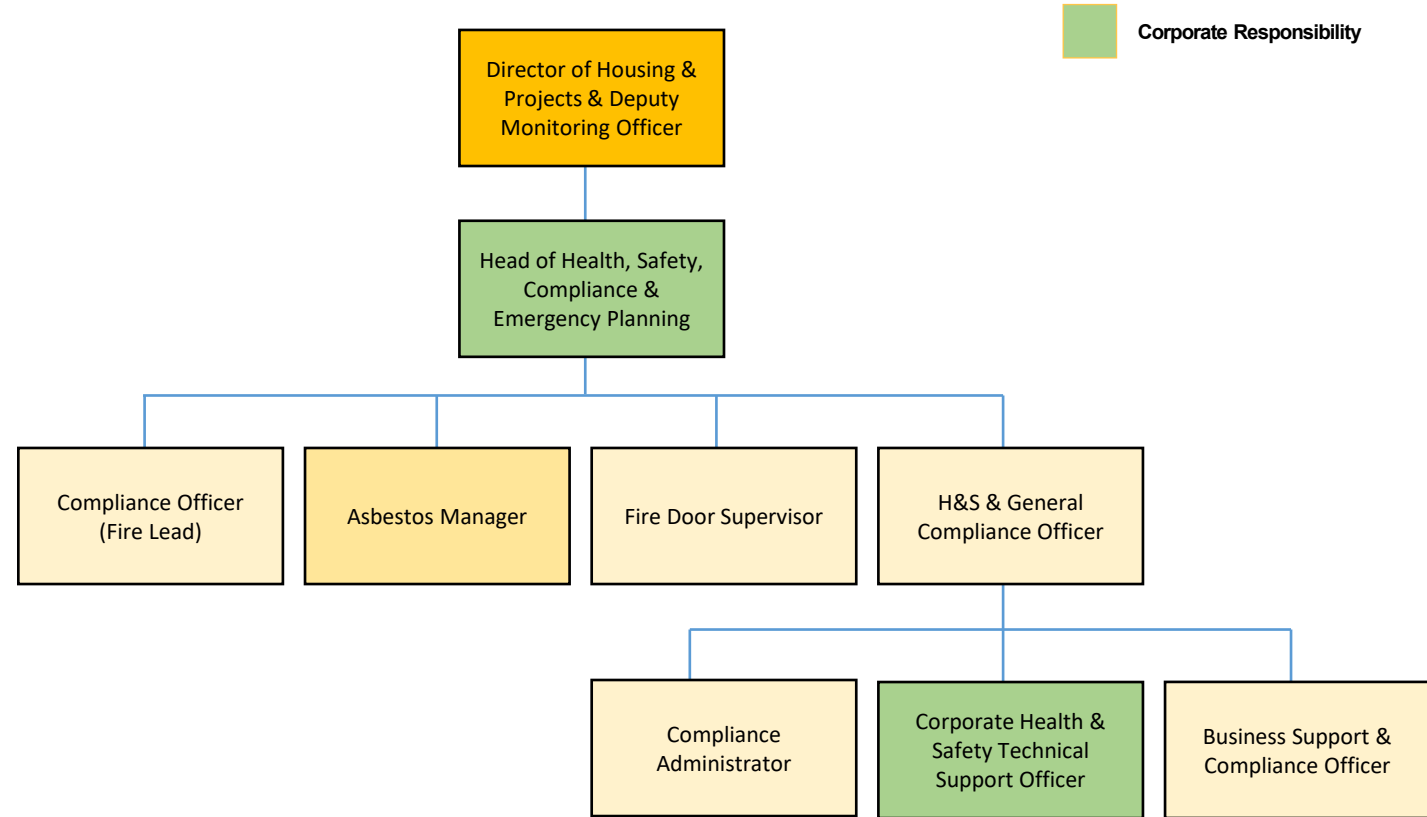


# IMPROVEMENTS

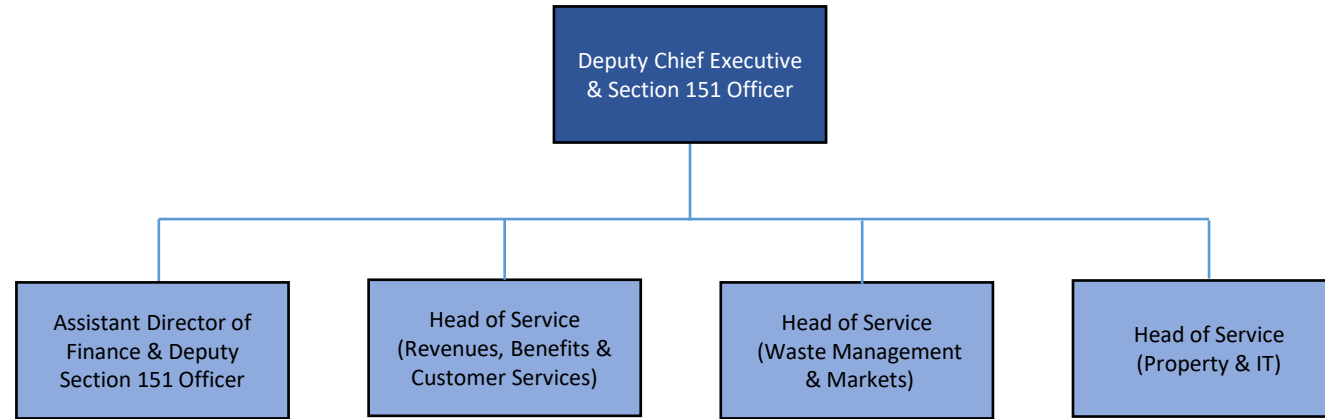


HOUSING TECHNICAL SERVICES BUSINESS SUPPORT

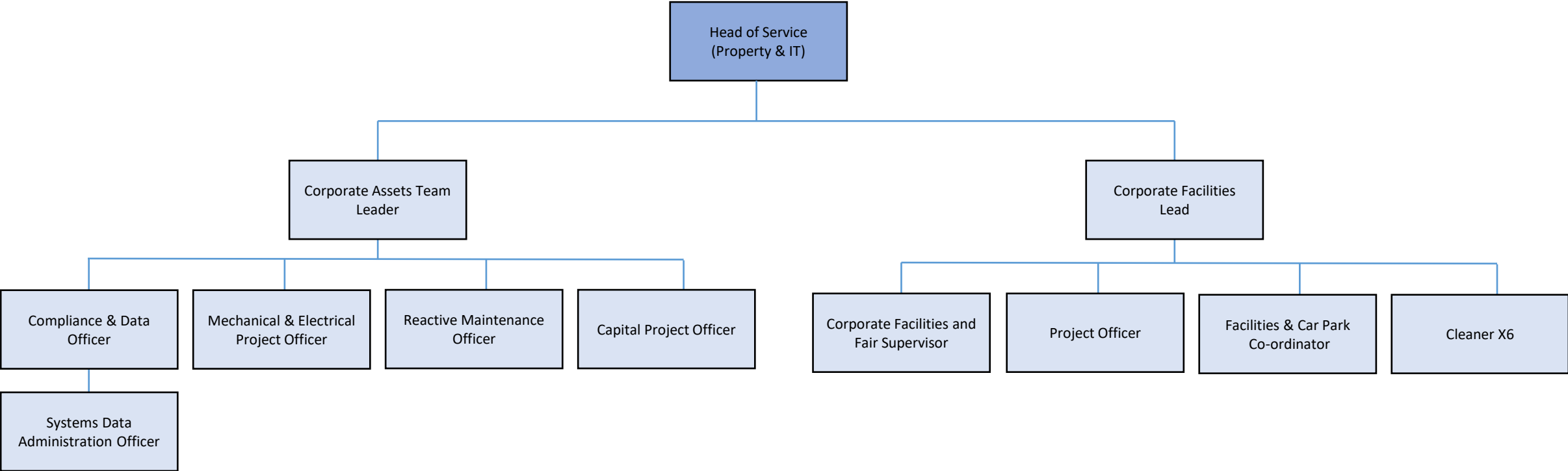


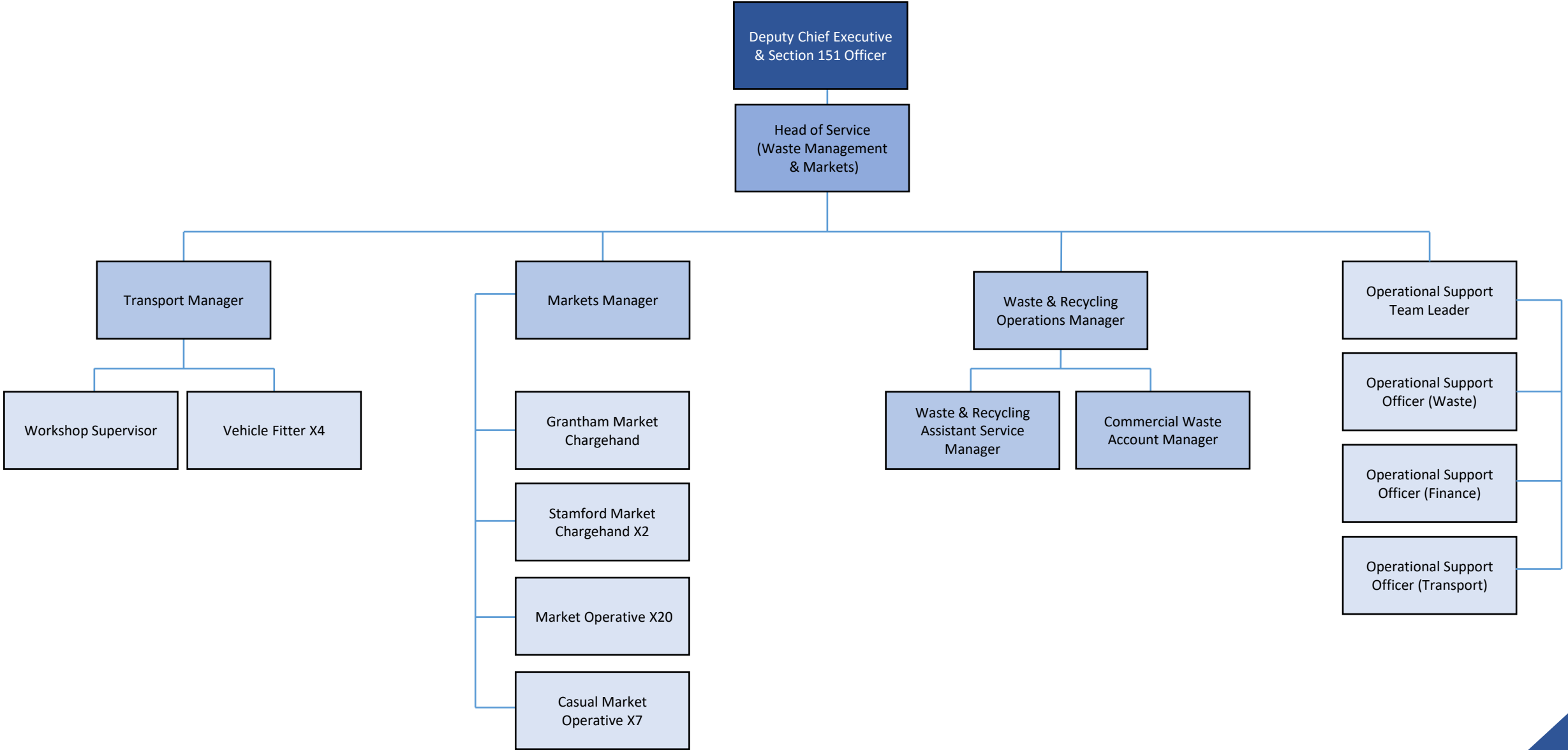




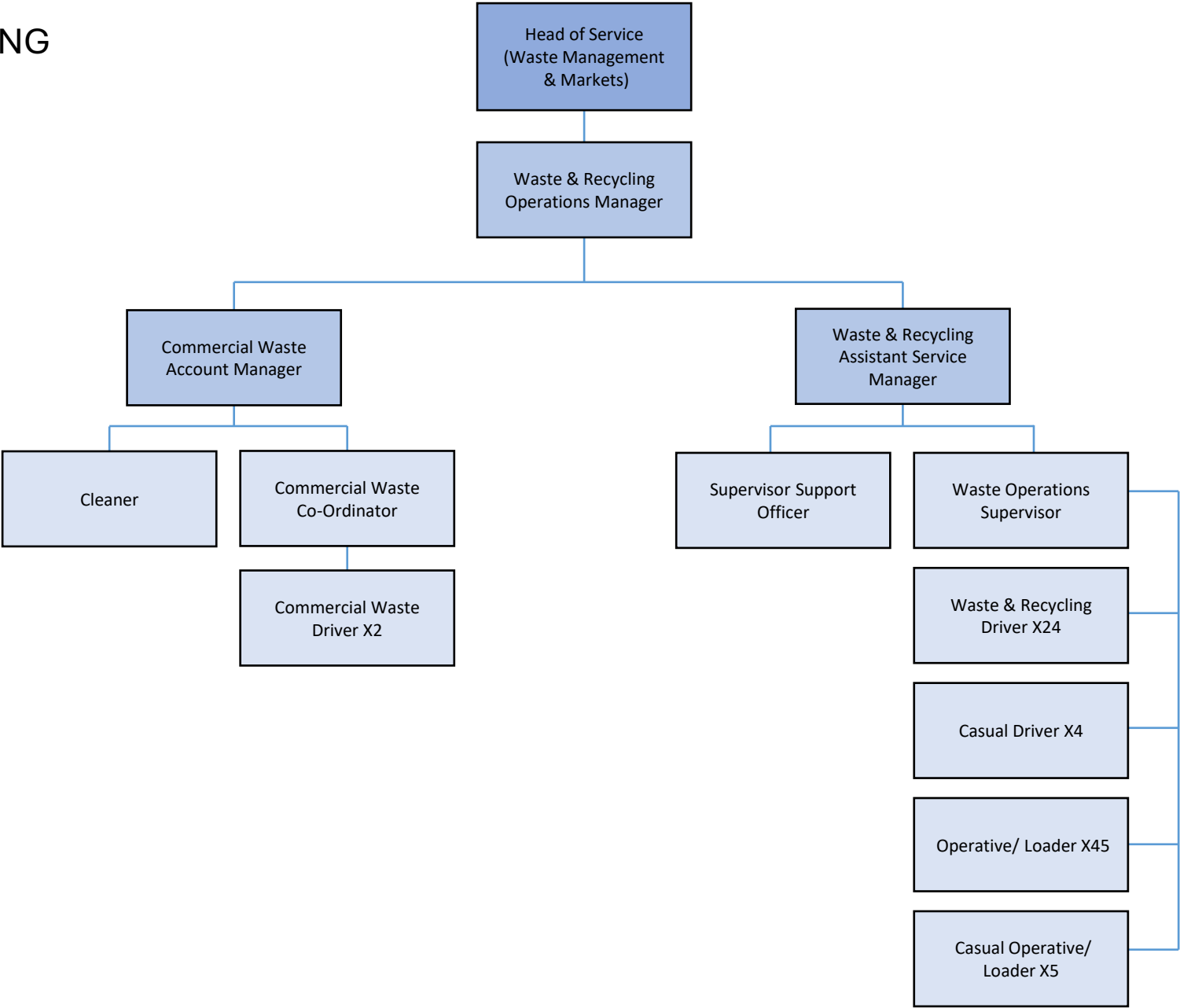


# CORPORATE FACILITIES & PROPERTY

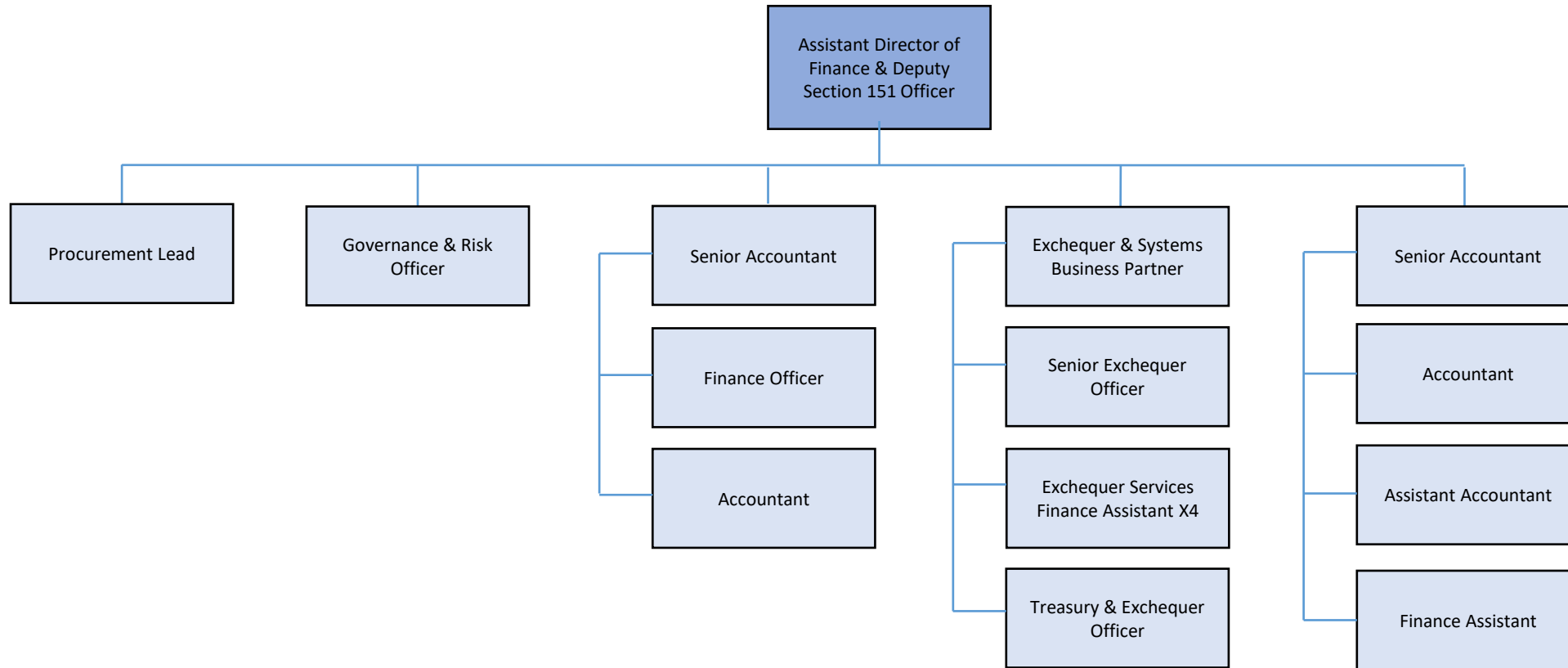




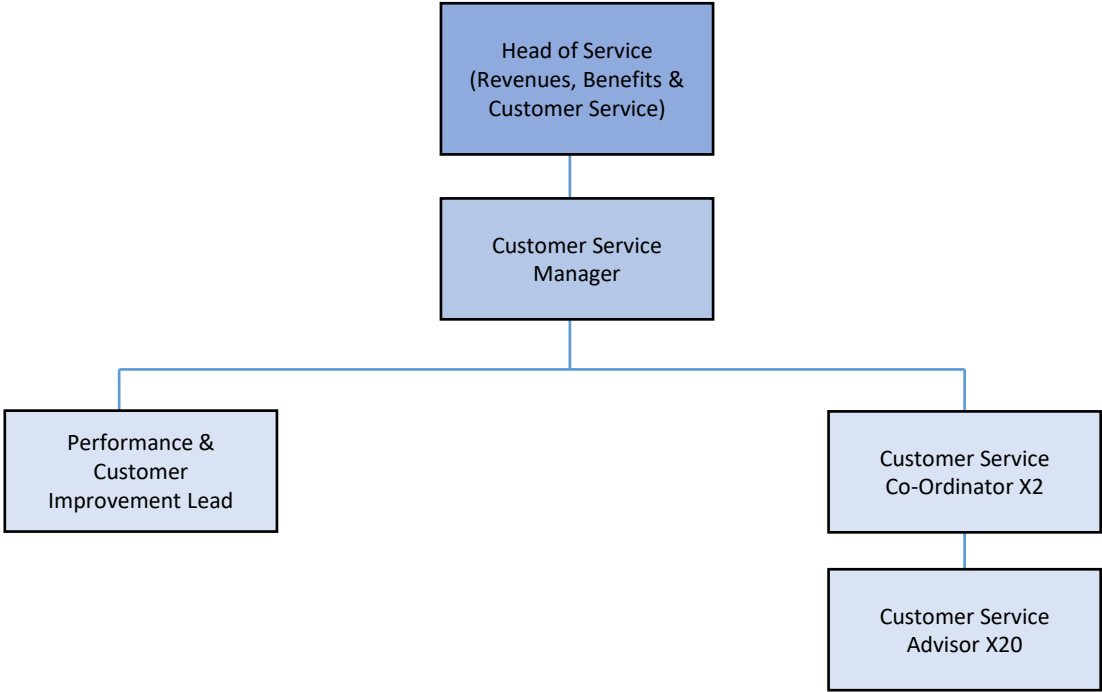
# WASTE & RECYCLING



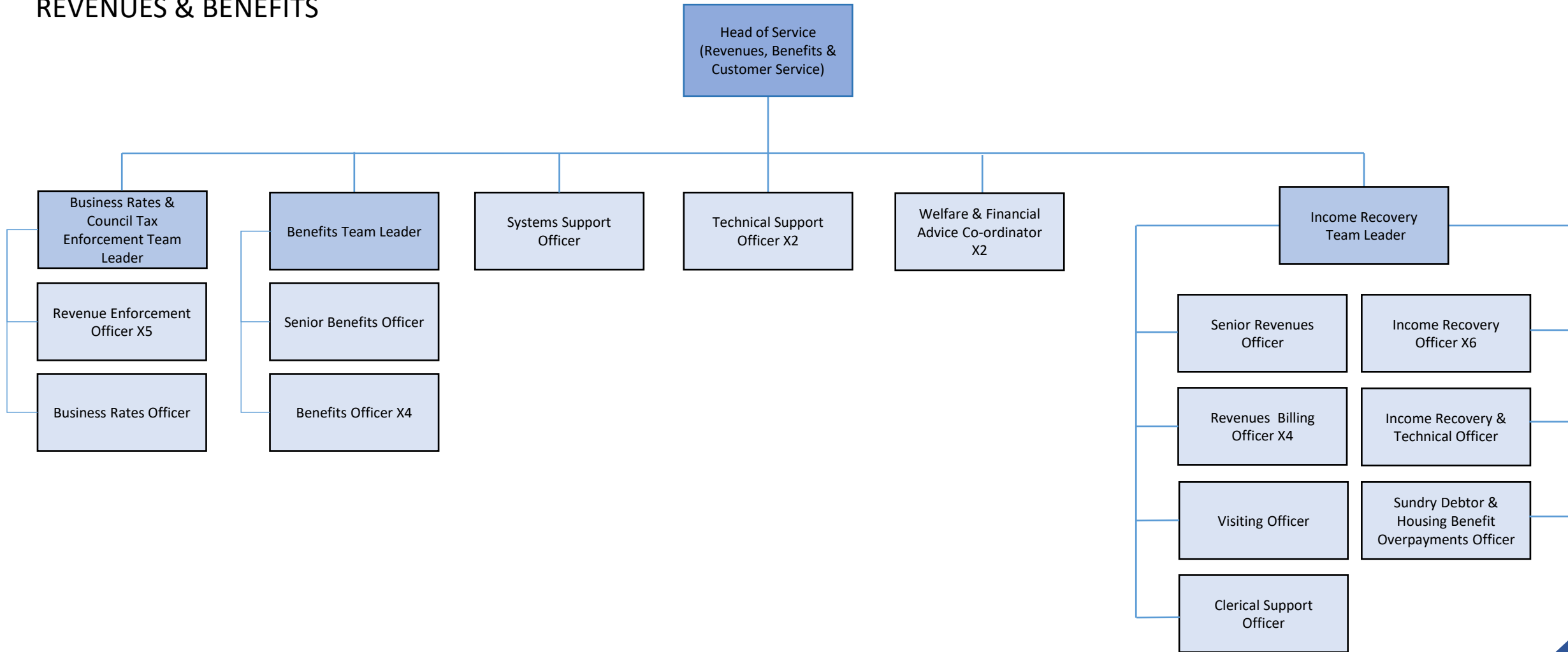
# FINANCE

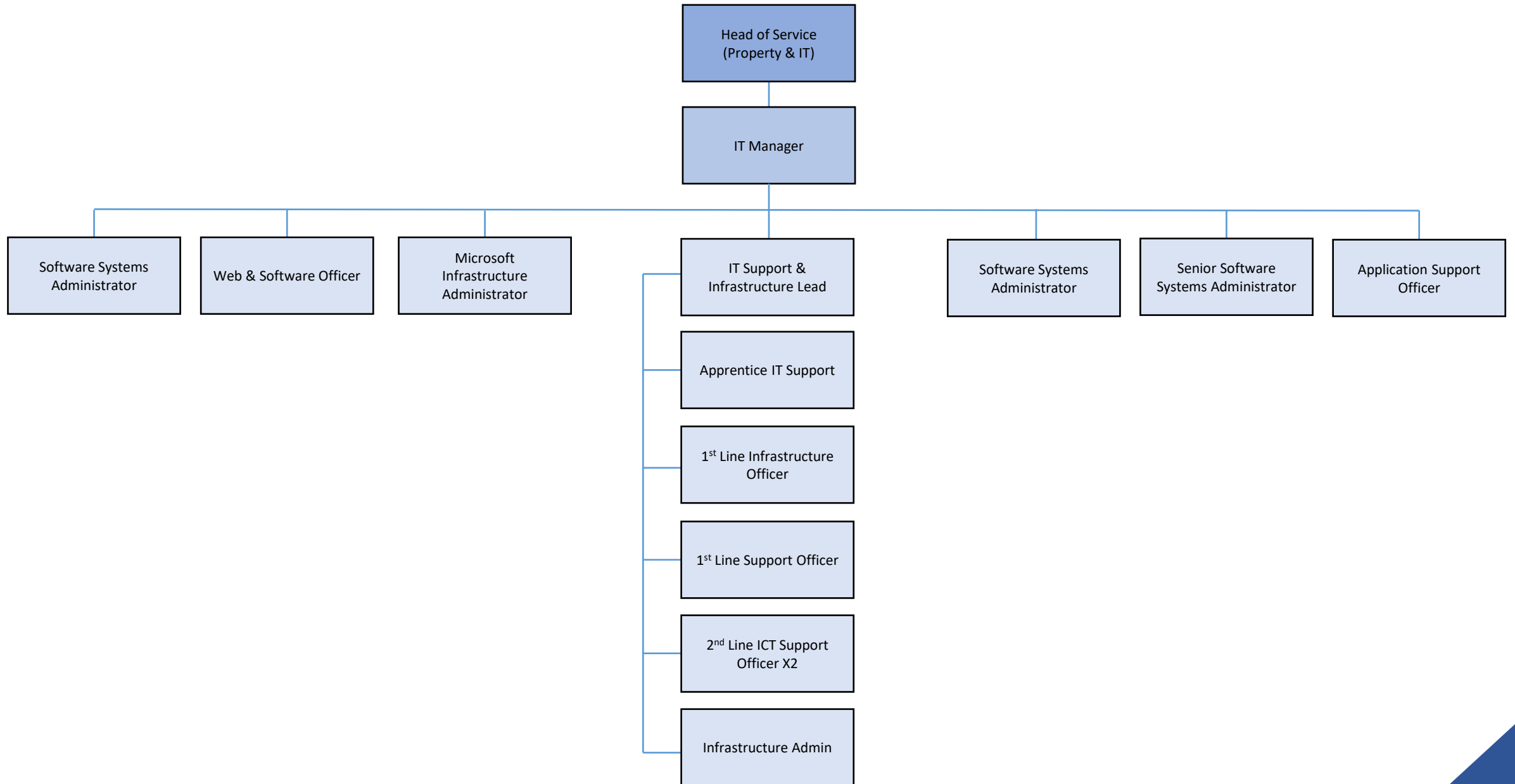


# CUSTOMER SERVICE

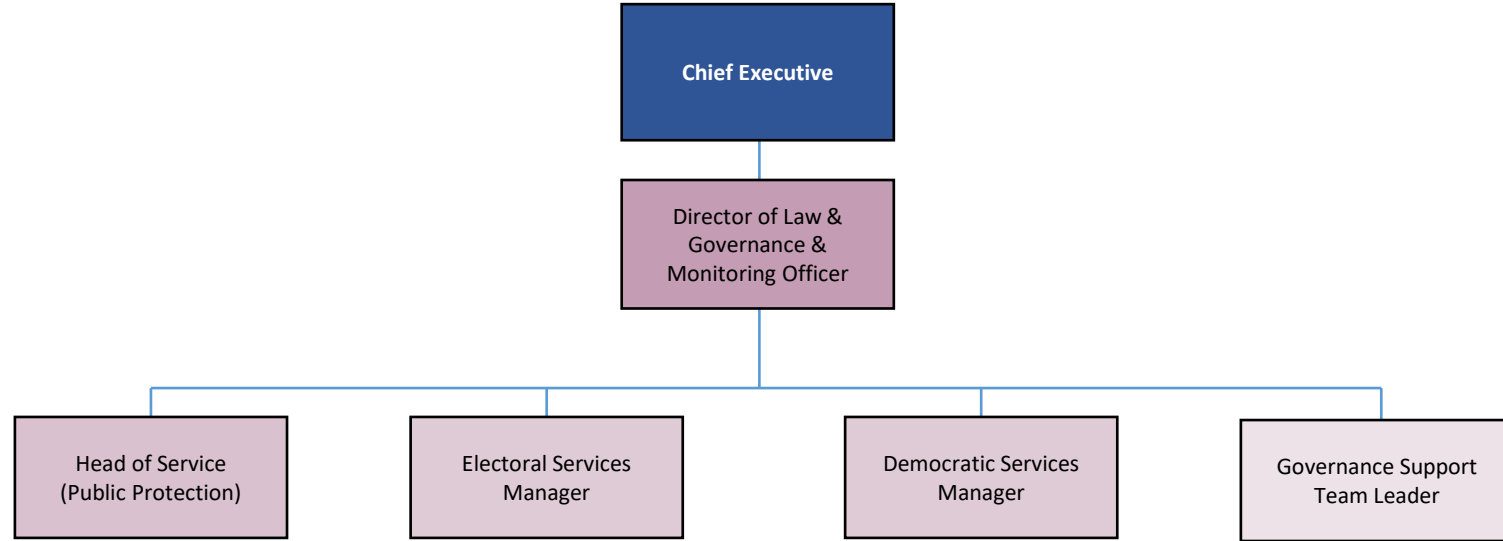


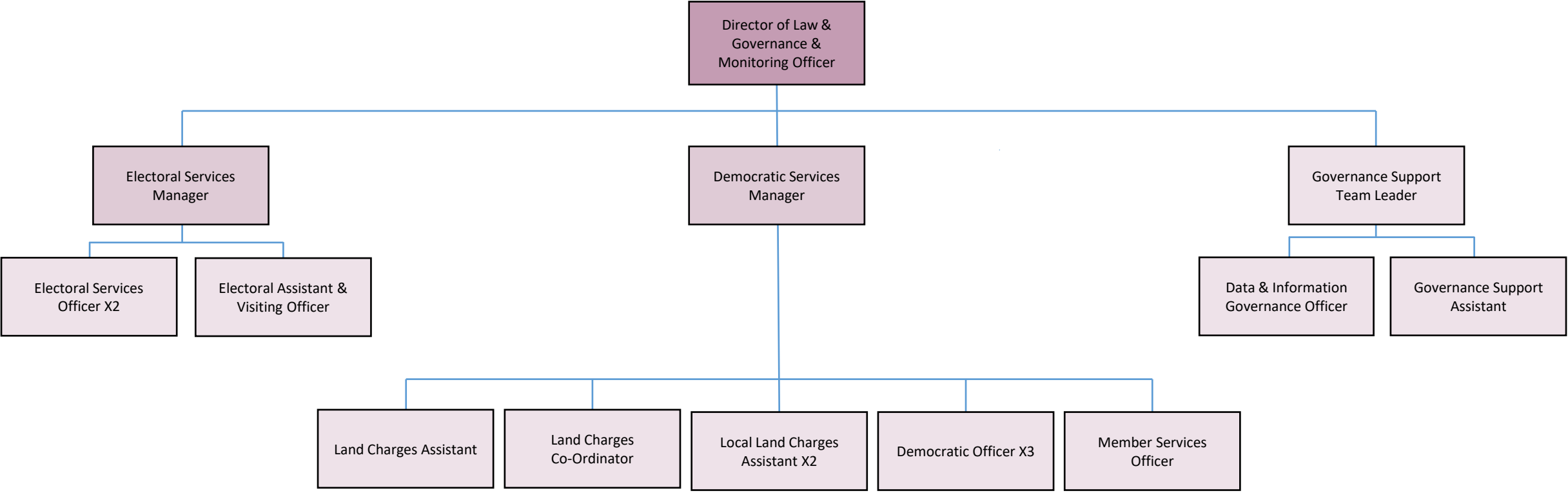
# REVENUES & BENEFITS



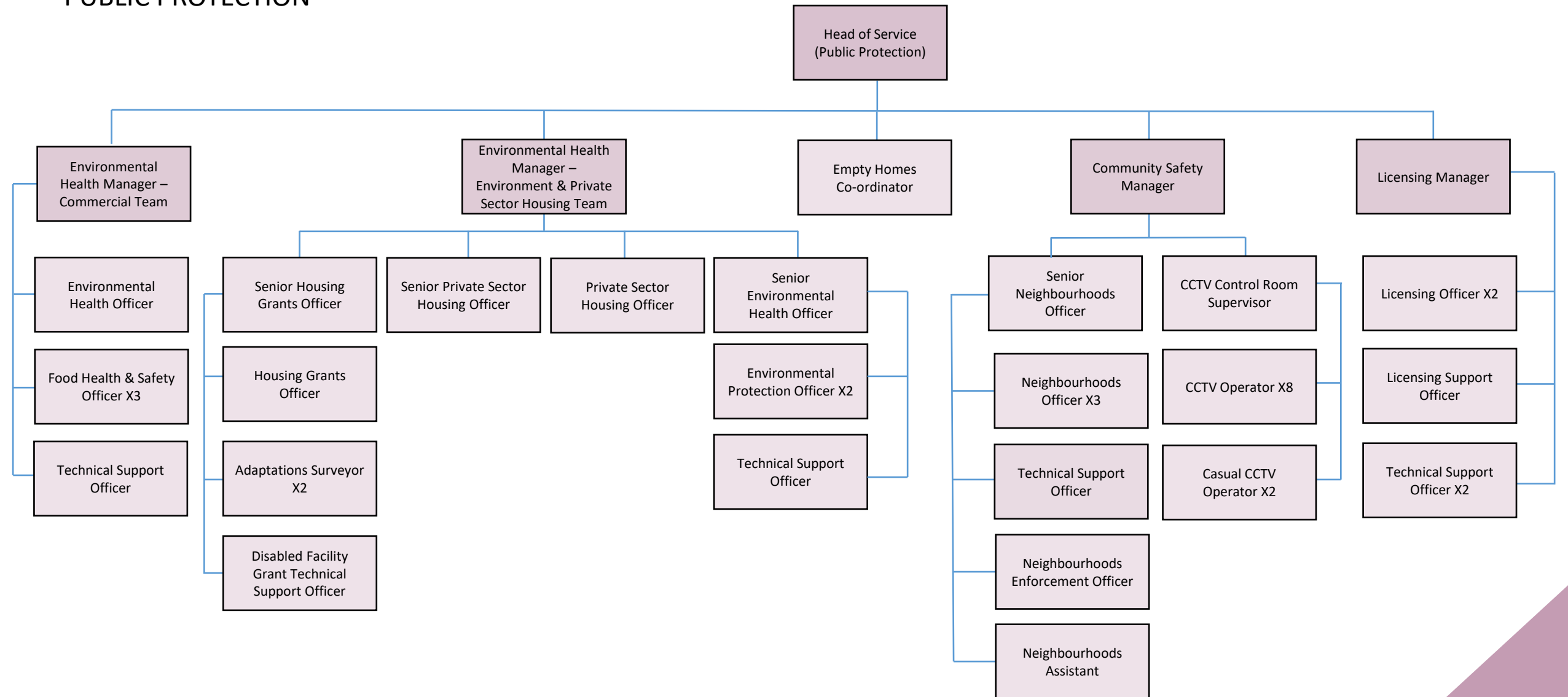








# PUBLIC PROTECTION



# HUMAN RESOURCES

