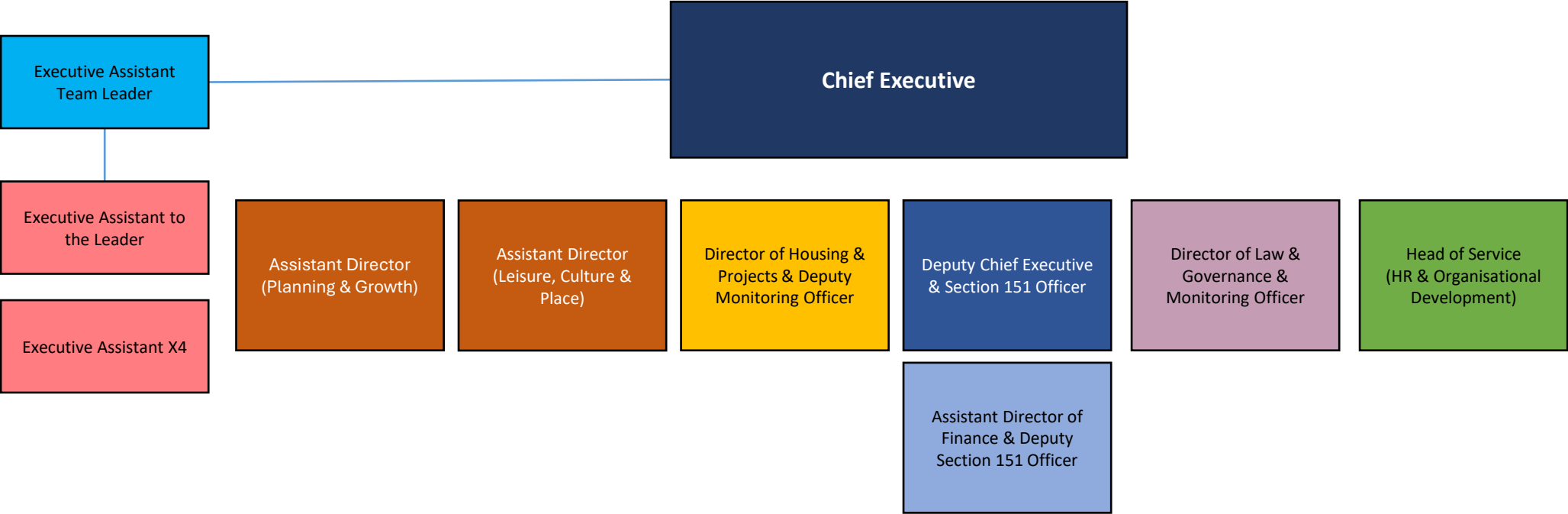
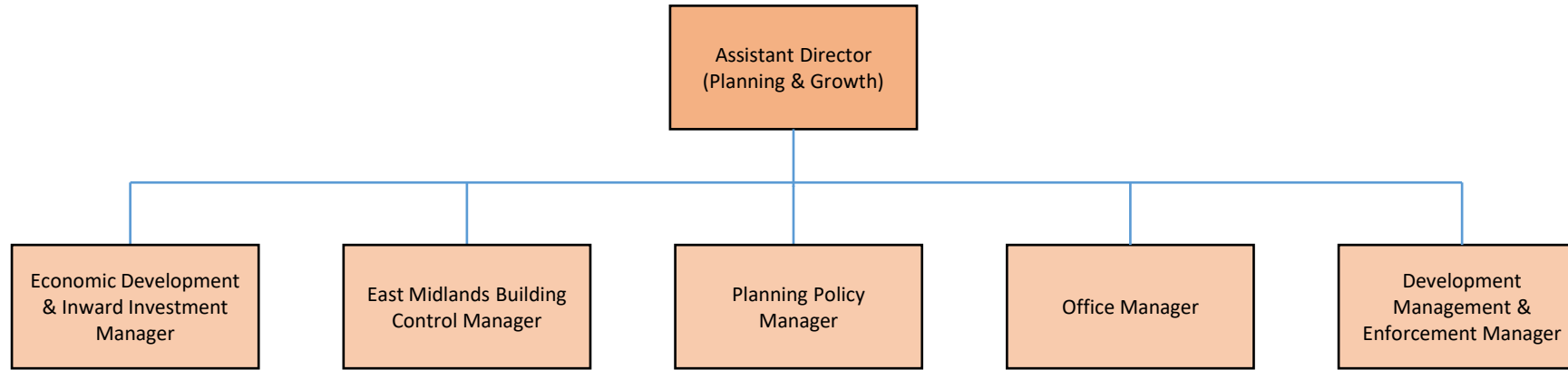


Organisational Structure as of July 2025

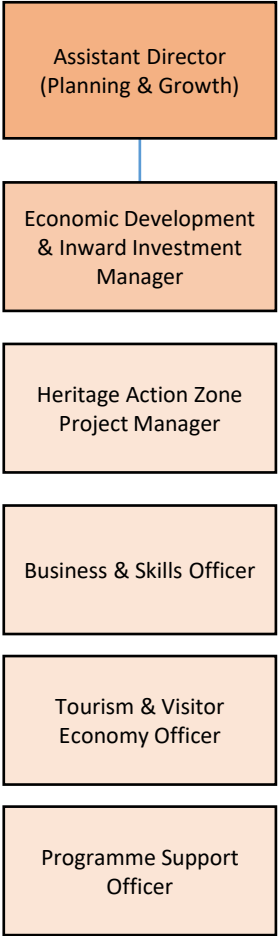


* Please note that numbers refer to headcount & not FTE

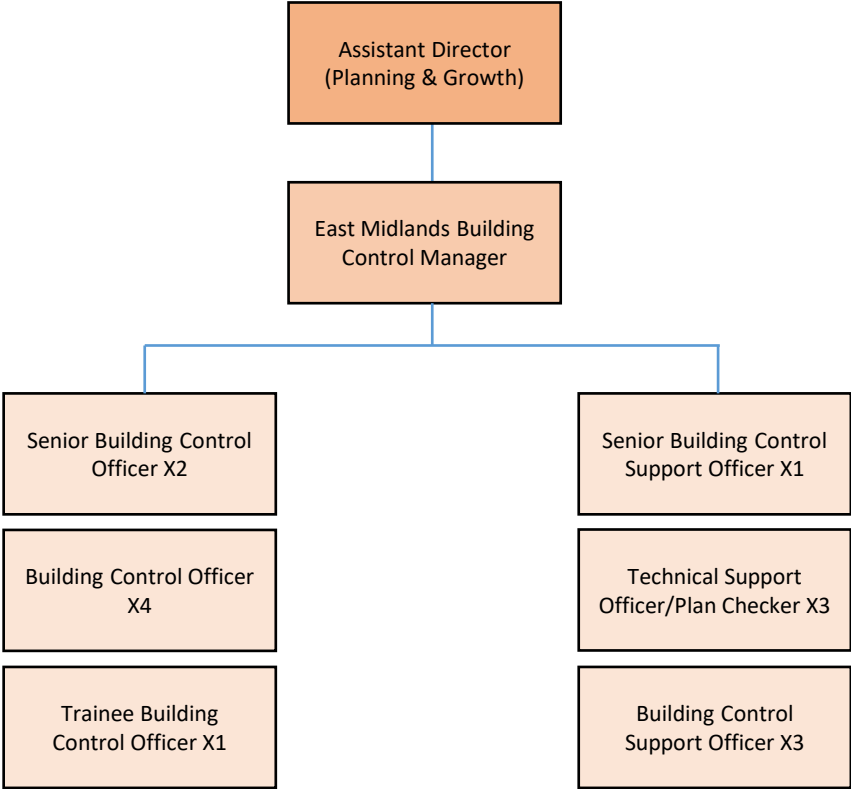




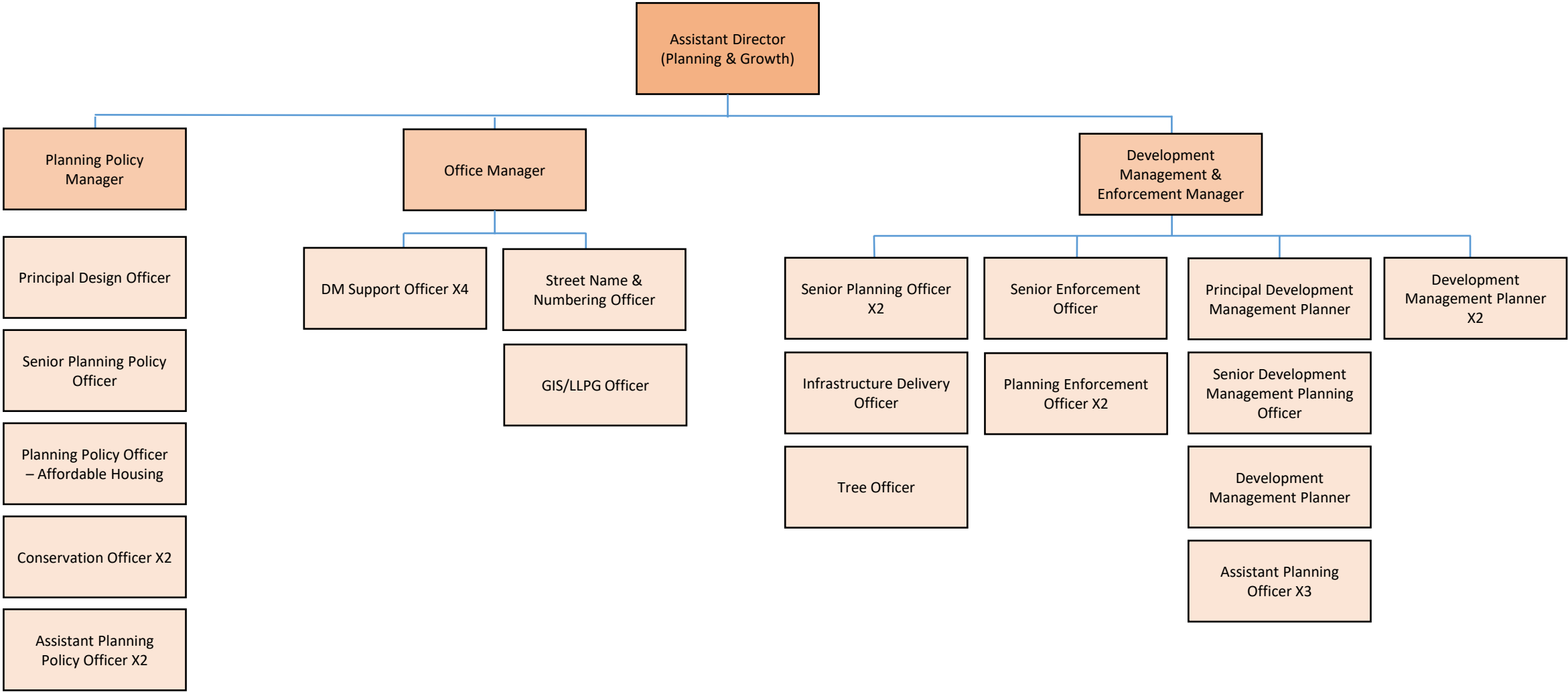
ECONOMIC DEVELOPMENT

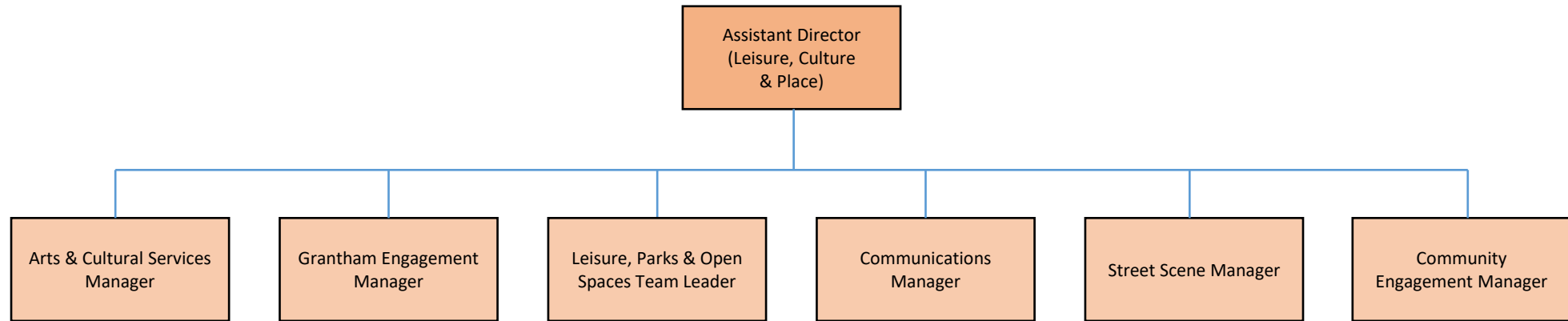


BUILDING CONTROL

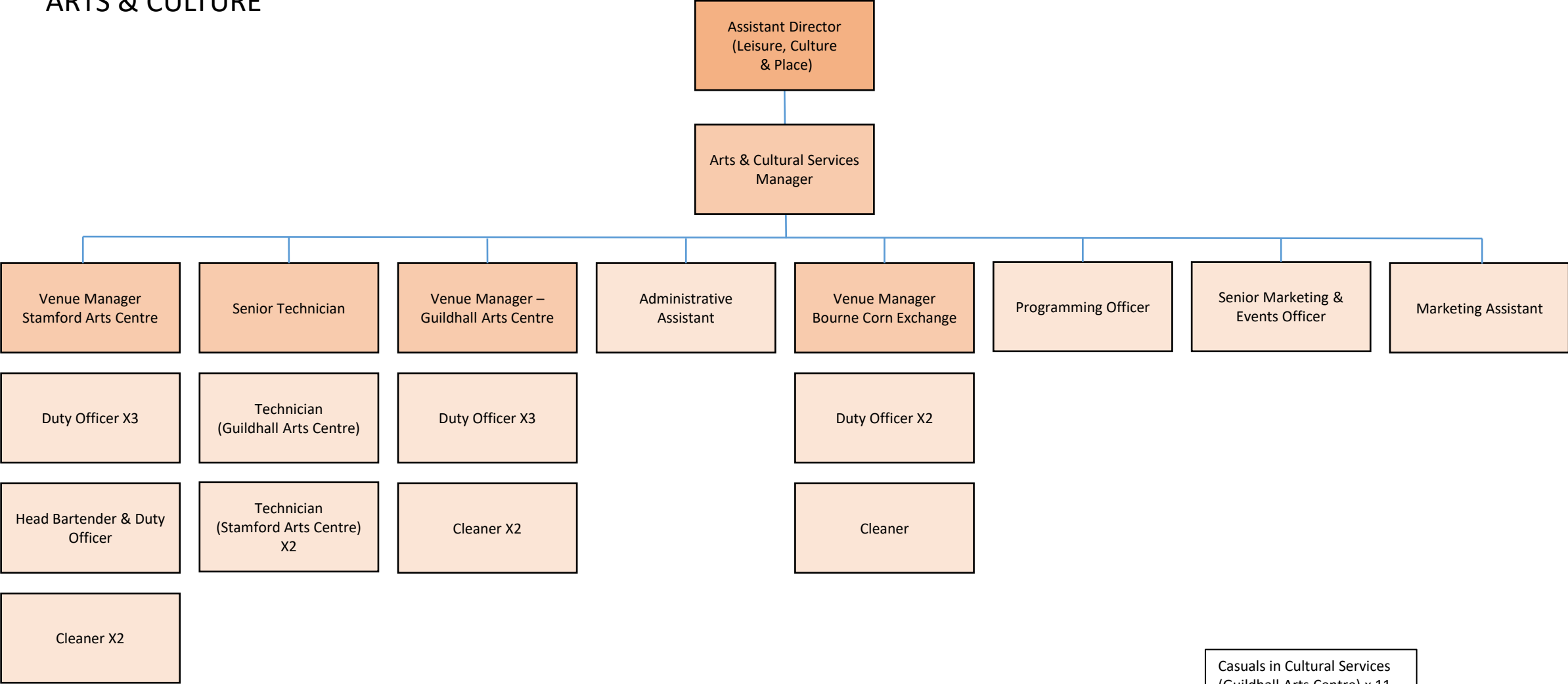


PLANNING





ARTS & CULTURE



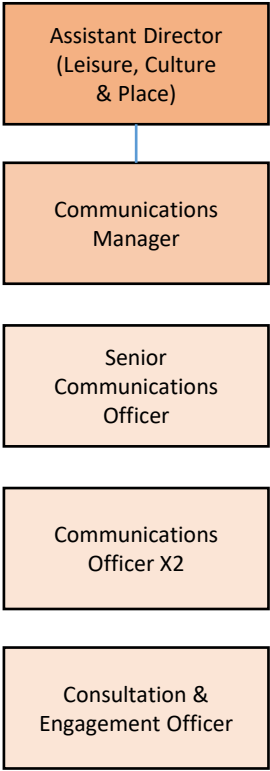
Casuals in Cultural Services
(Guildhall Arts Centre) x 11

Casuals in Cultural Services
(Stamford Arts Centre) x 37

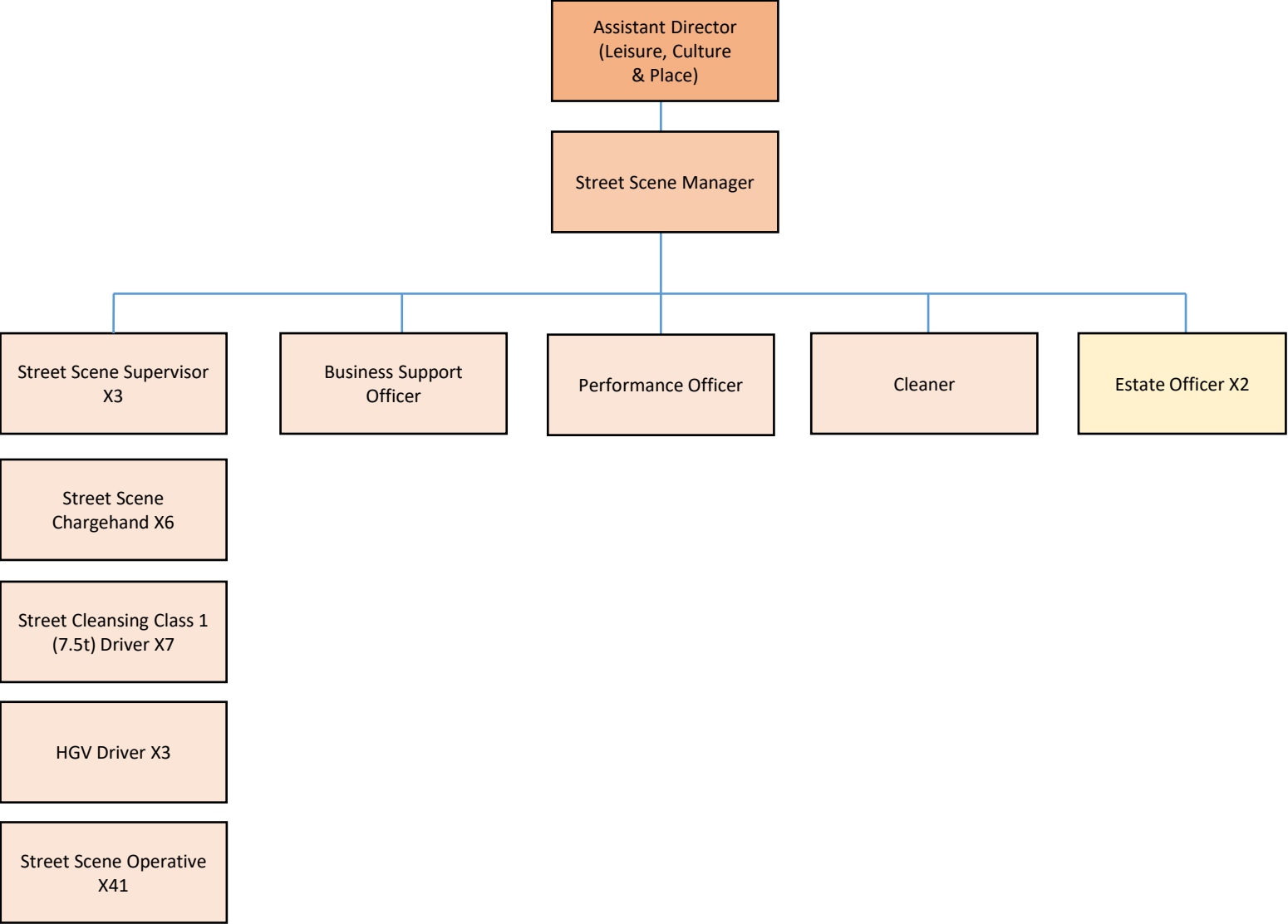
PARKS & LEISURE



COMMS

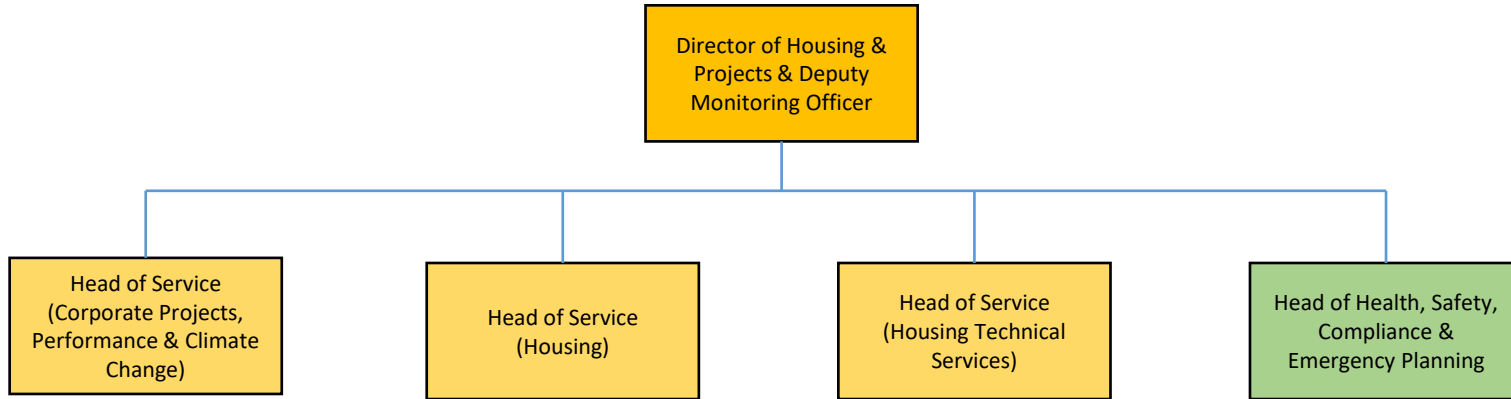


STREET SCENE

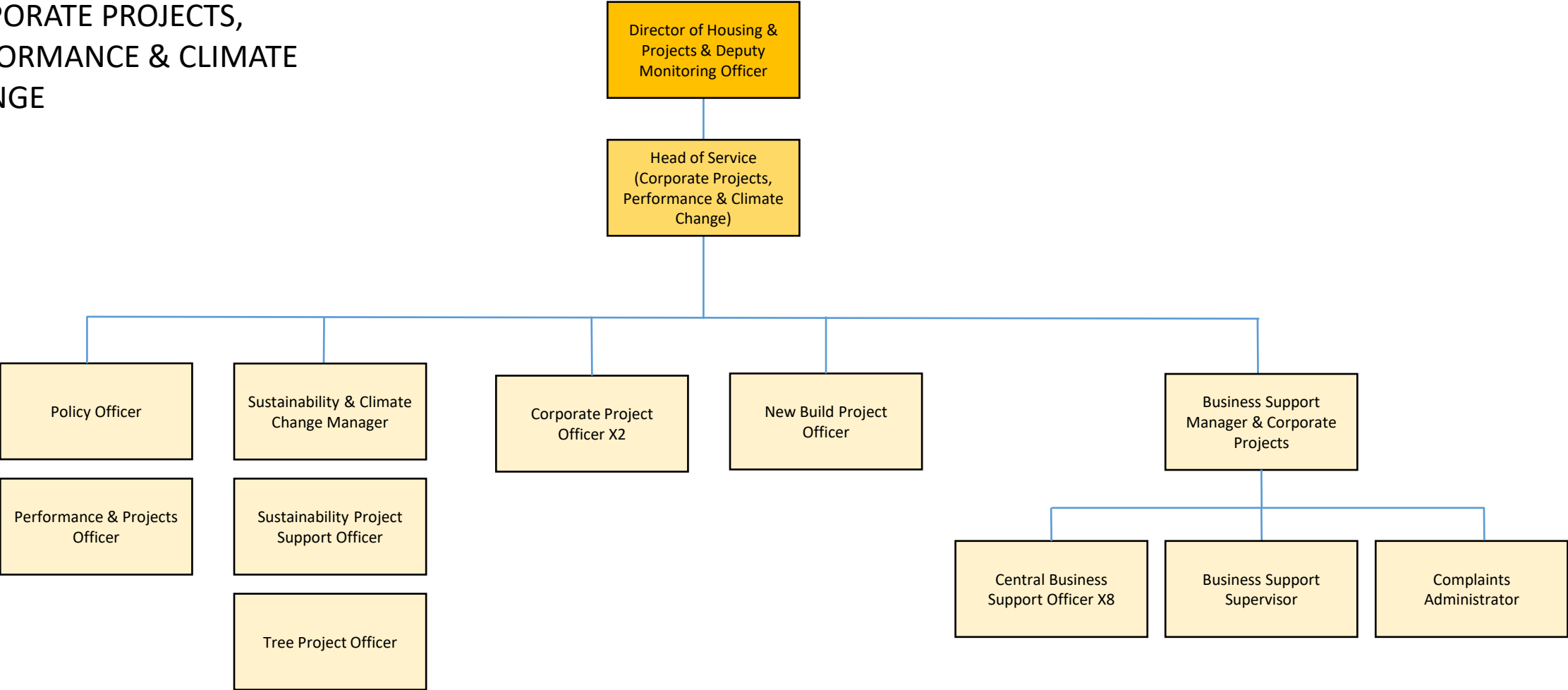


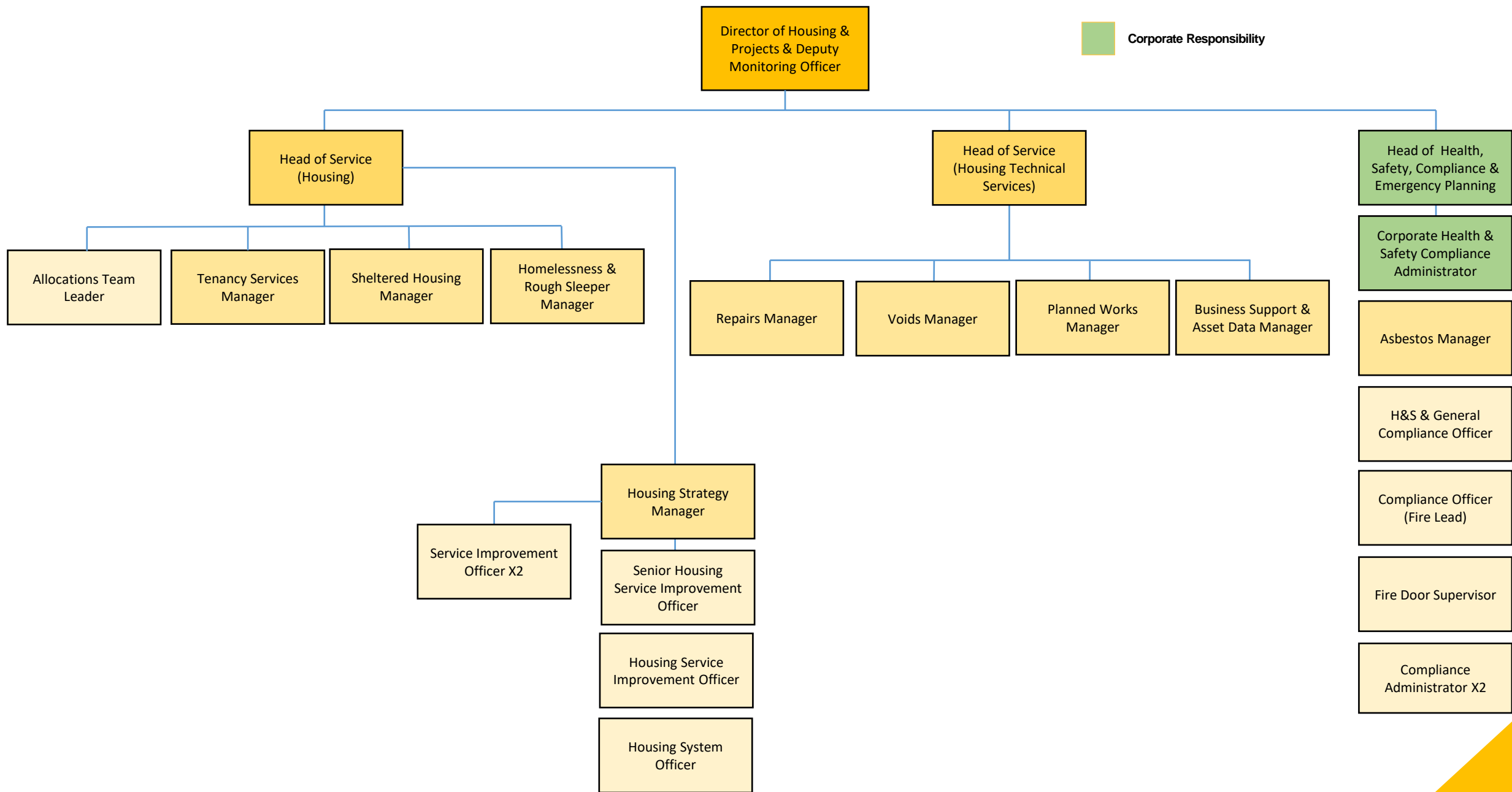
COMMUNITY ENGAGEMENT



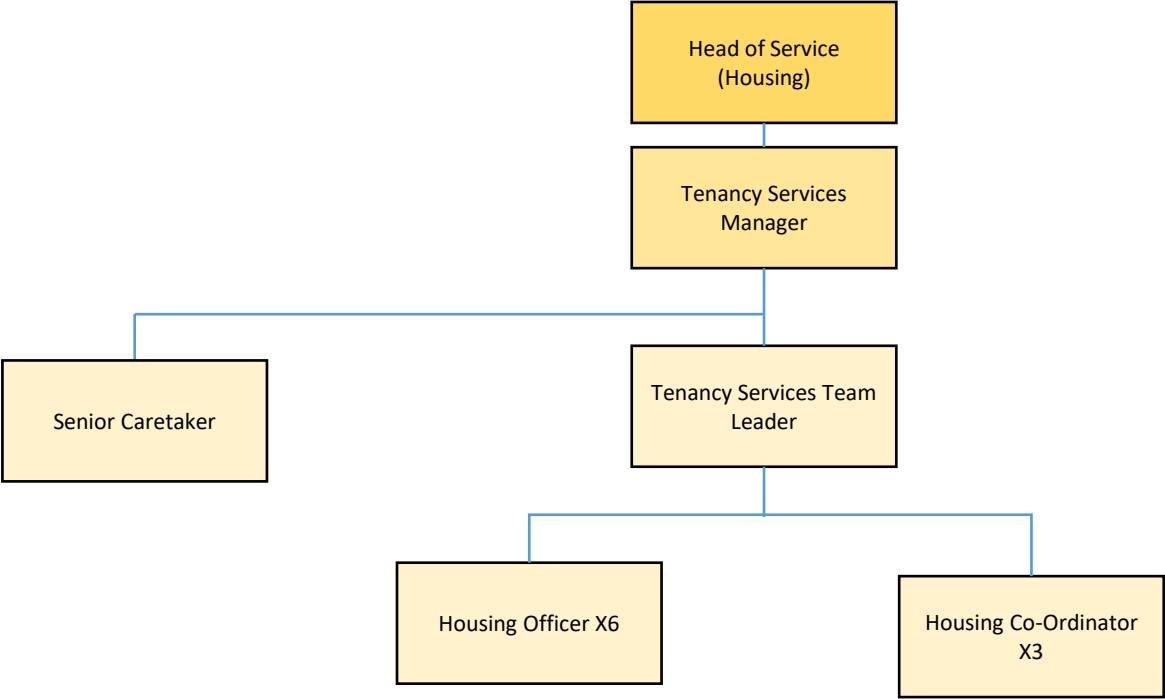


CORPORATE PROJECTS, PERFORMANCE & CLIMATE CHANGE

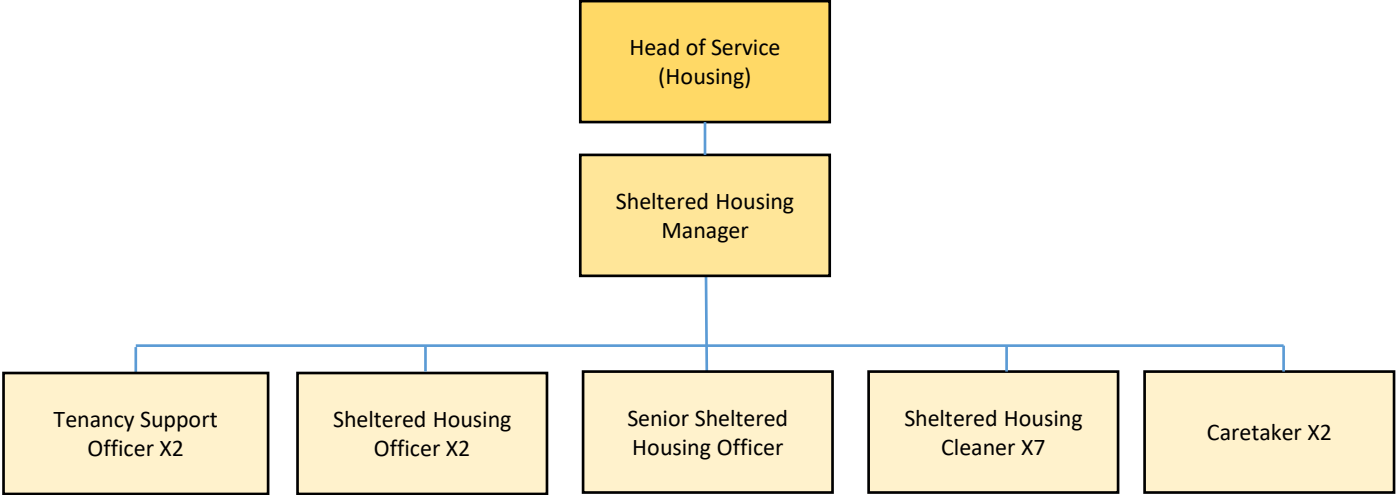




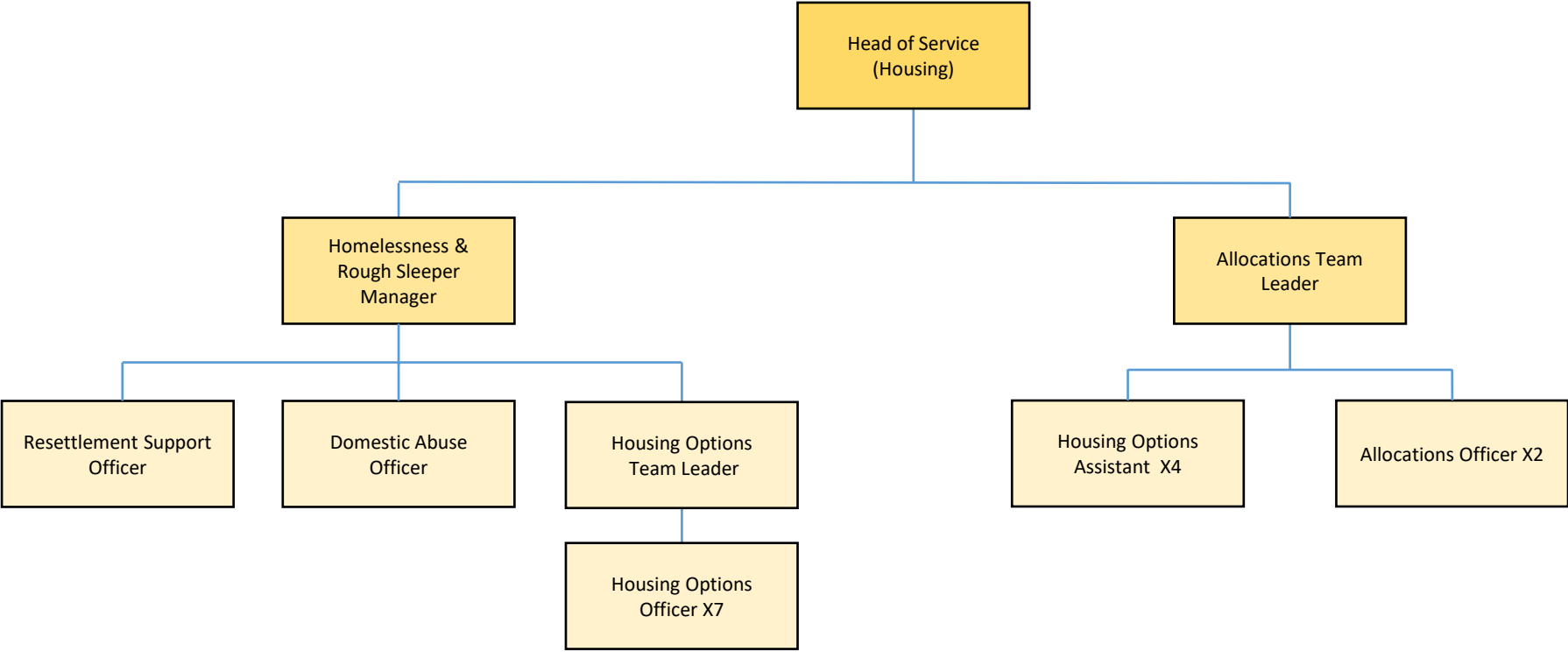
TENANCY SERVICES



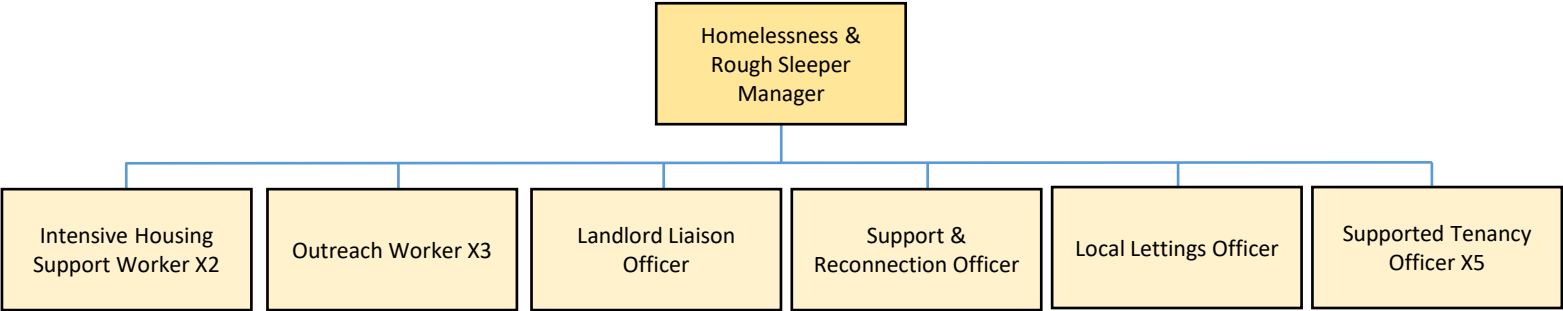
SHELTERED HOUSING



HOUSING OPTIONS



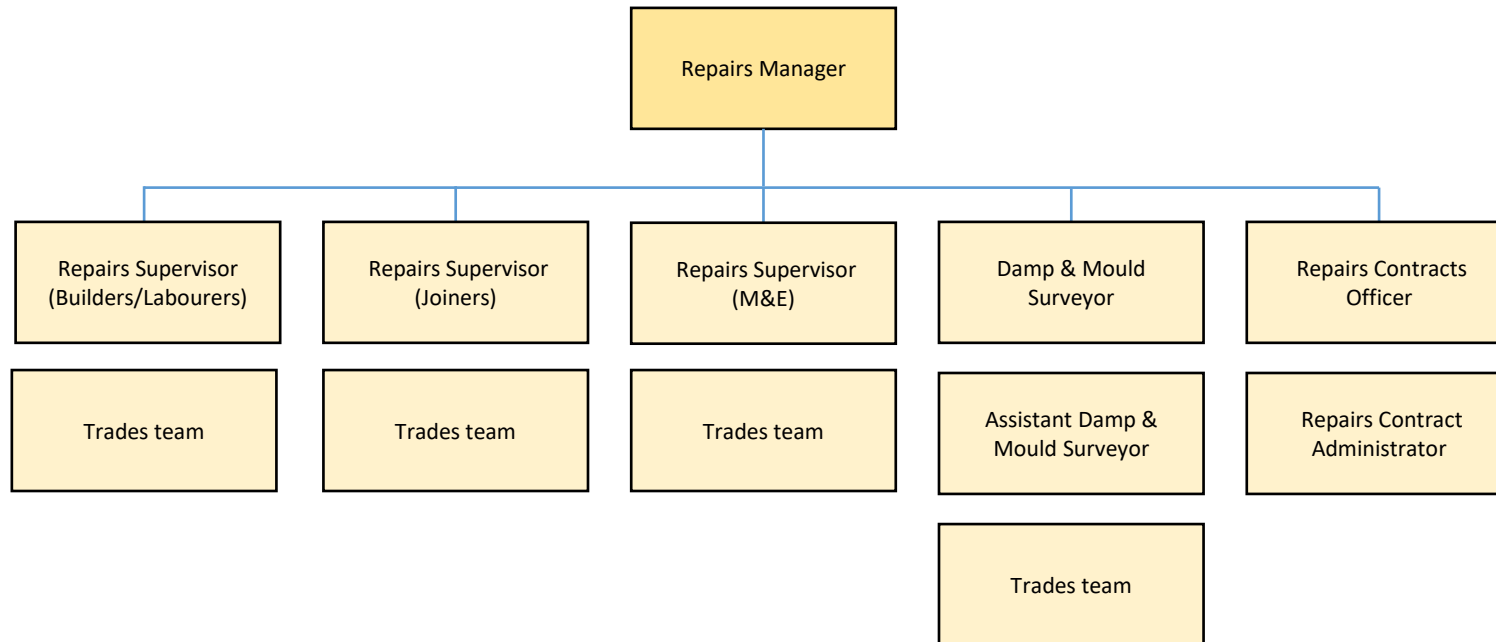
ROUGH SLEEPER INITIATIVE PROJECT
(externally funded)



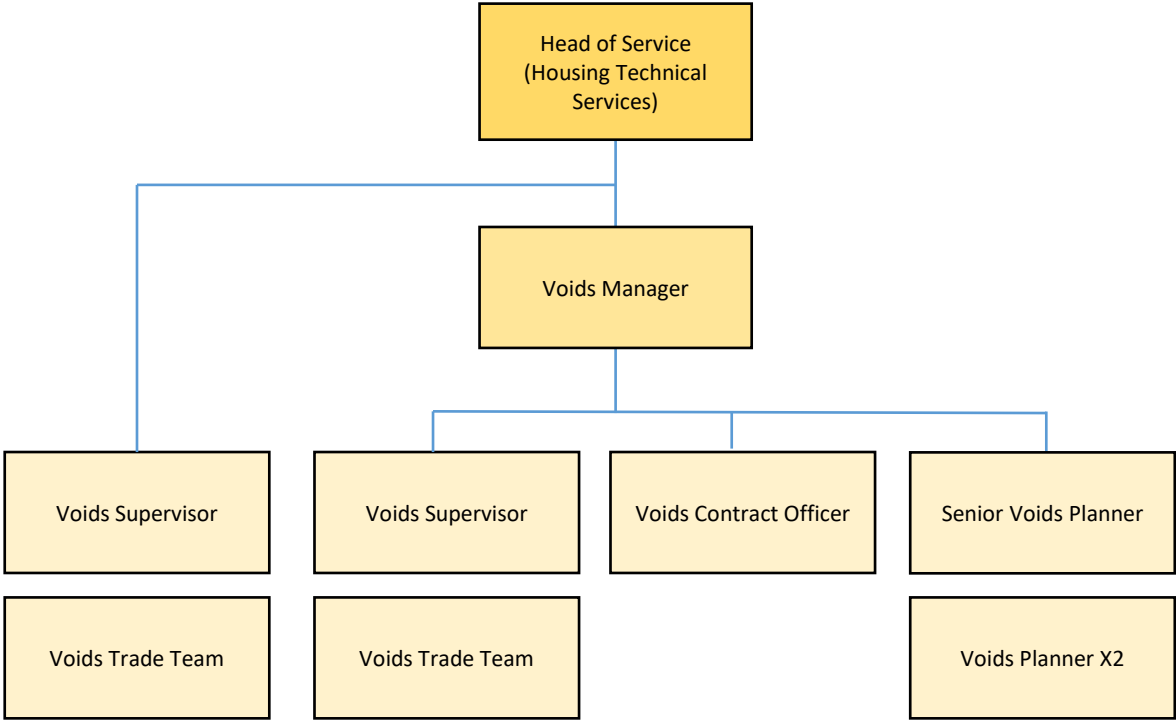
This is a partnership project of 4 Lincolnshire authorities working collaboratively to prevent rough sleeping in line with statutory responsibilities:

- North Kesteven District Council (NKDC)
- West Lindsey District Council (WLDC)
- South Holl & District Council (SHDC)
- South Kesteven District Council (SKDC)

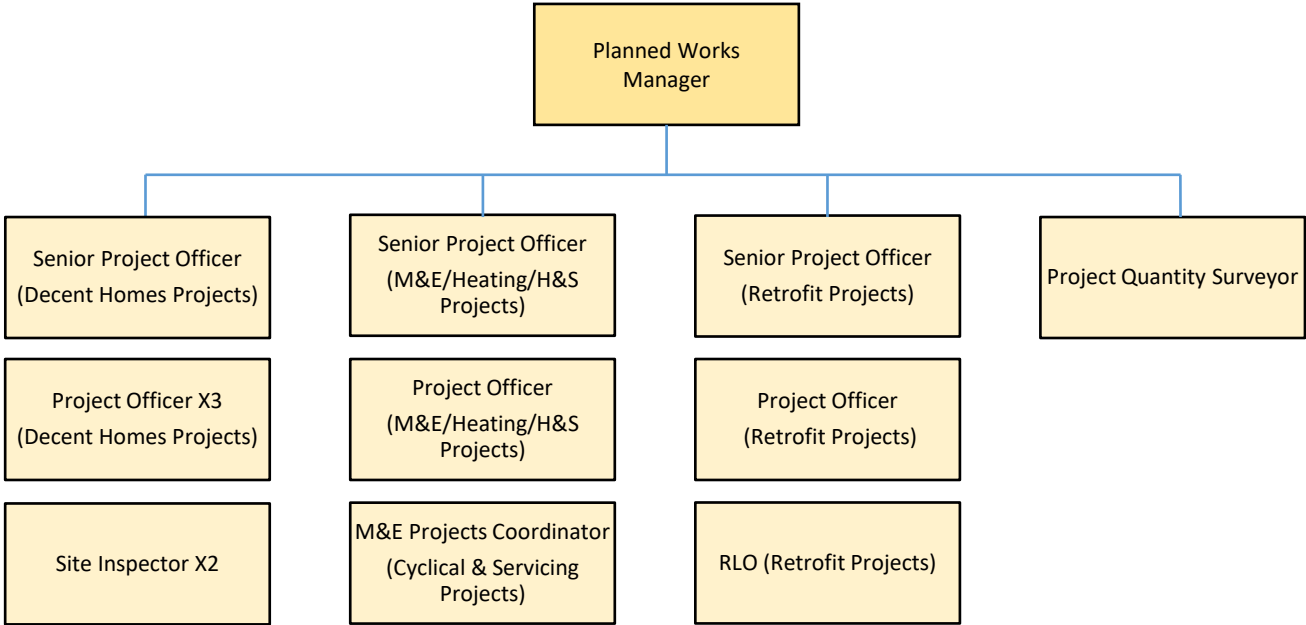
REPAIRS



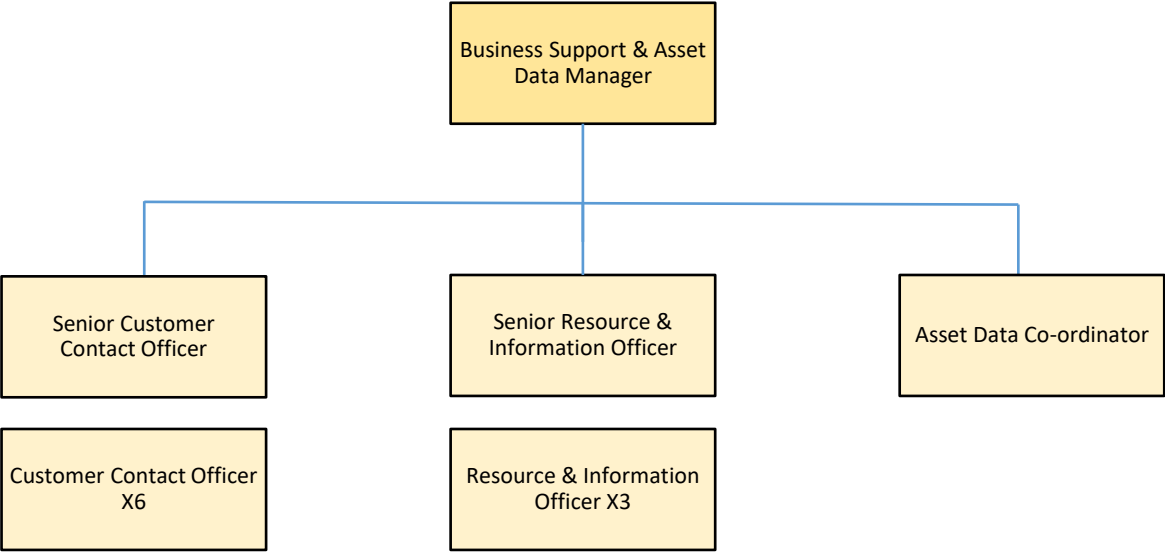
VOIDS

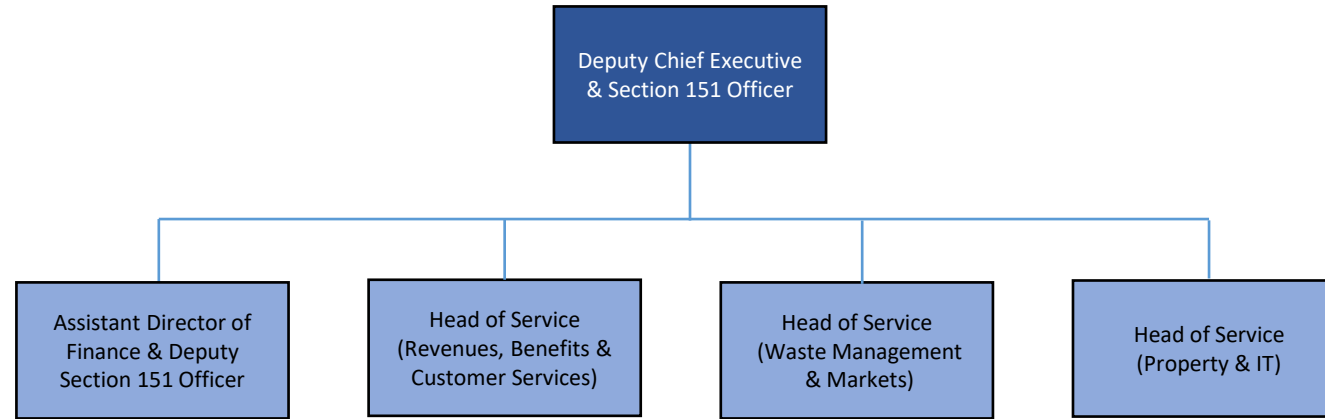


IMPROVEMENTS

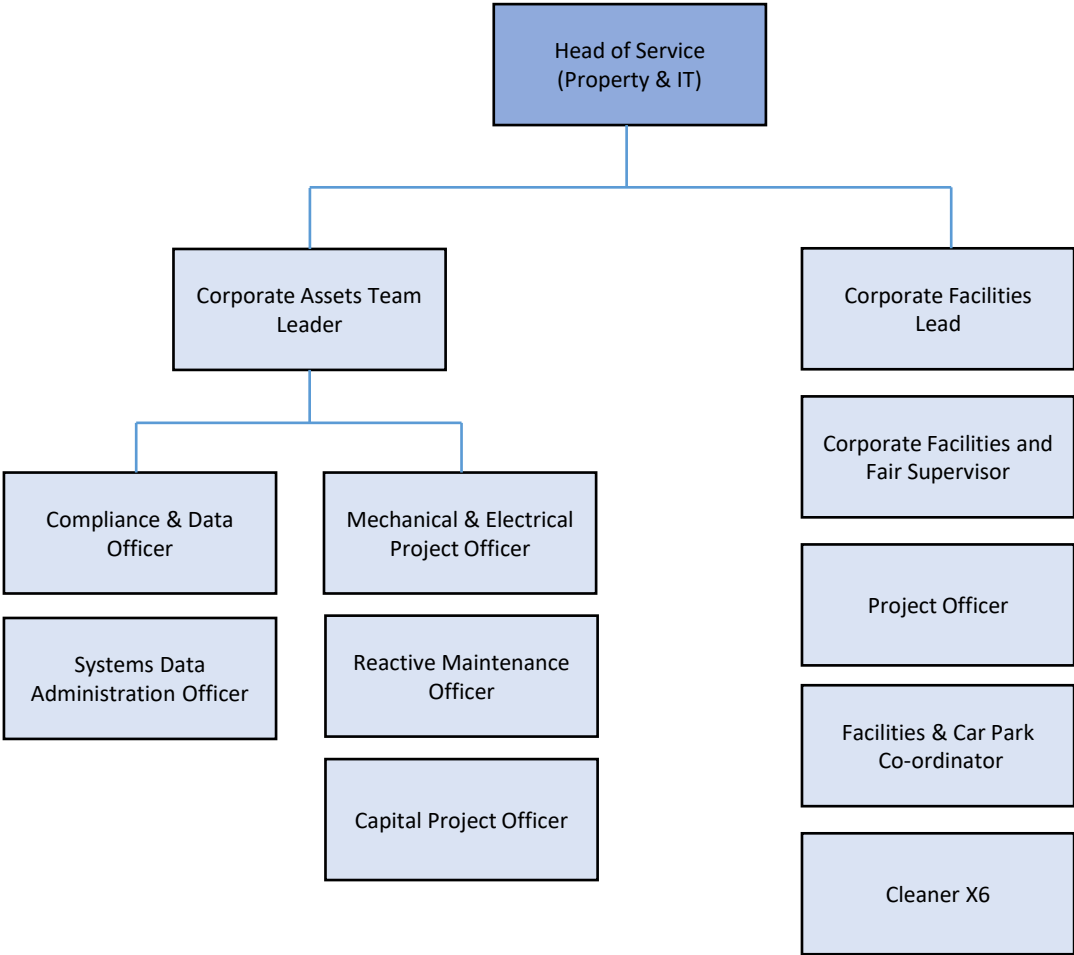


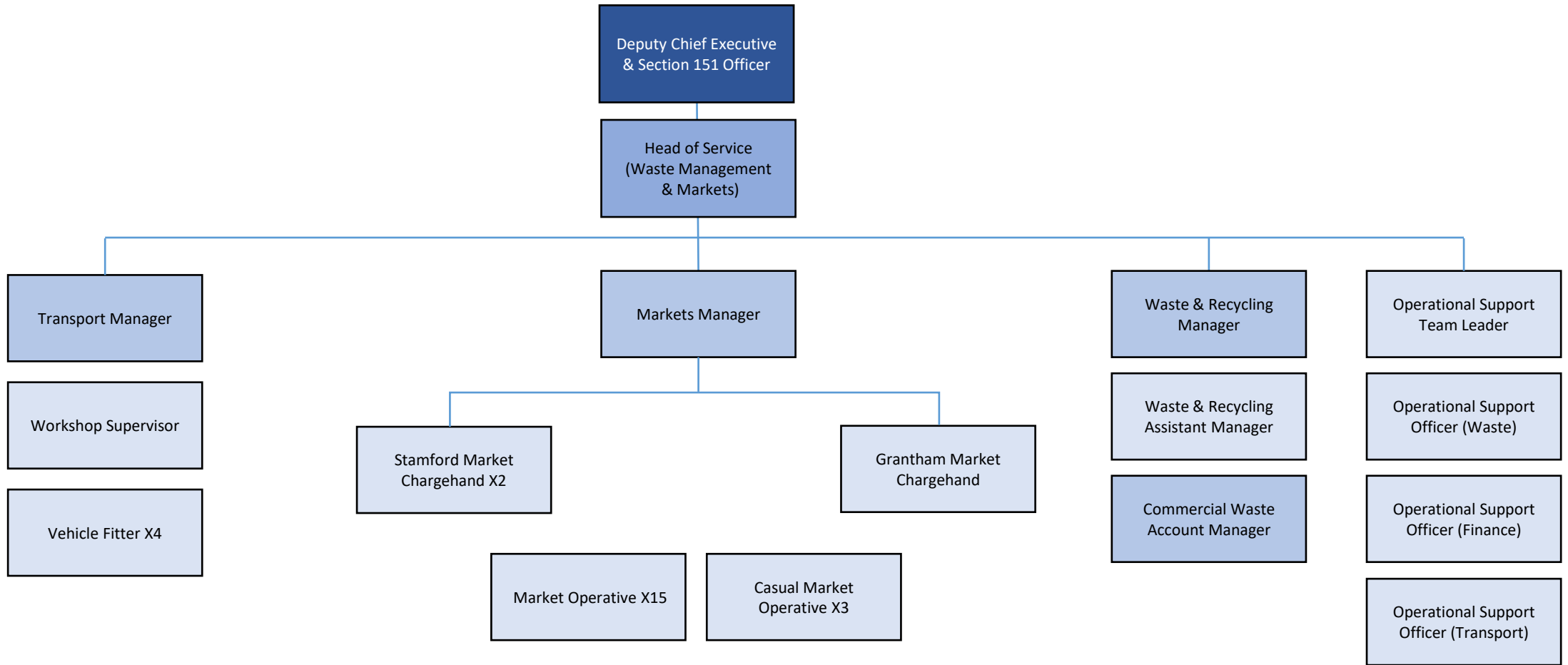
HOUSING TECHNICAL SERVICES BUSINESS SUPPORT



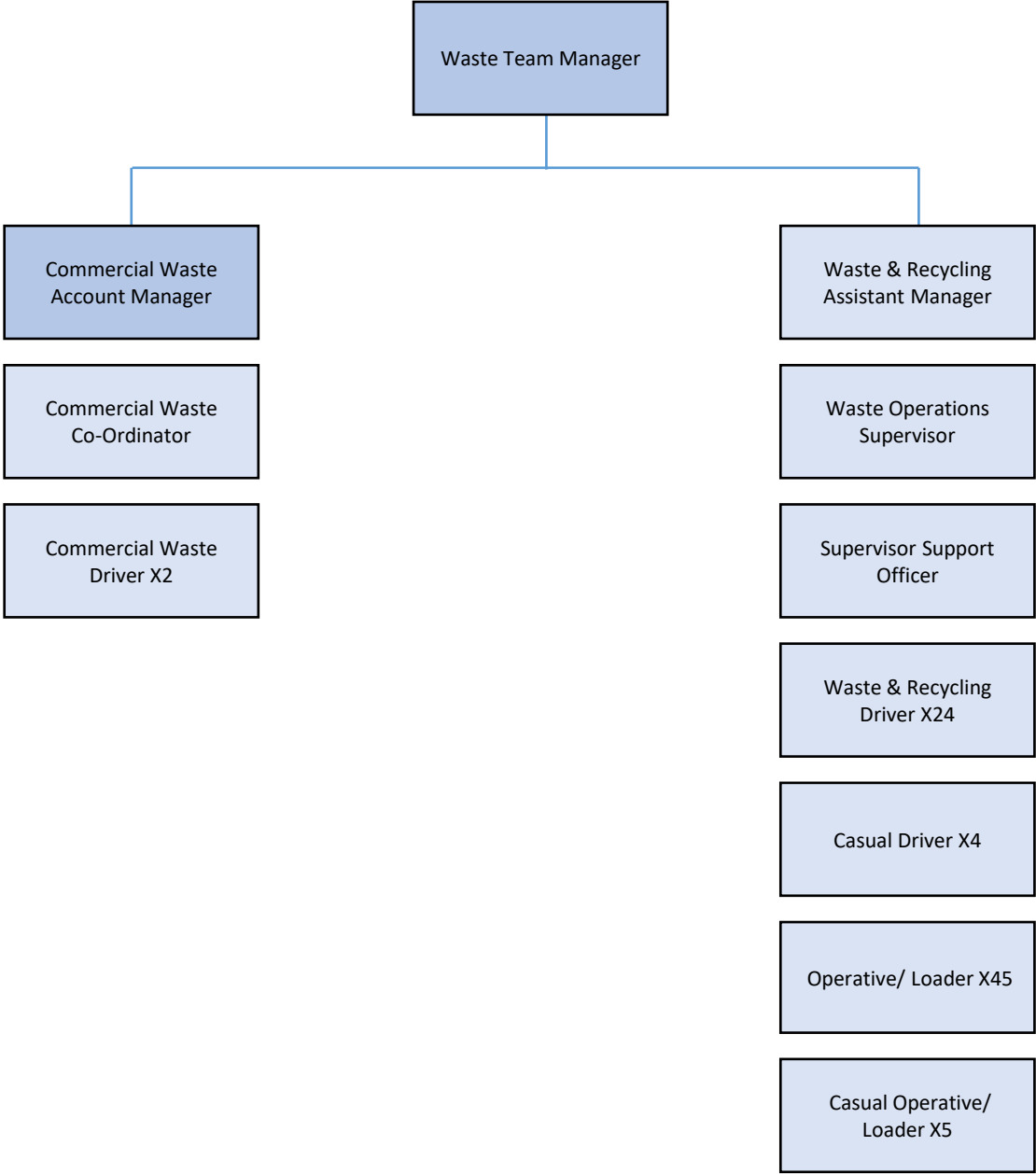


CORPORATE FACILITIES & PROPERTY

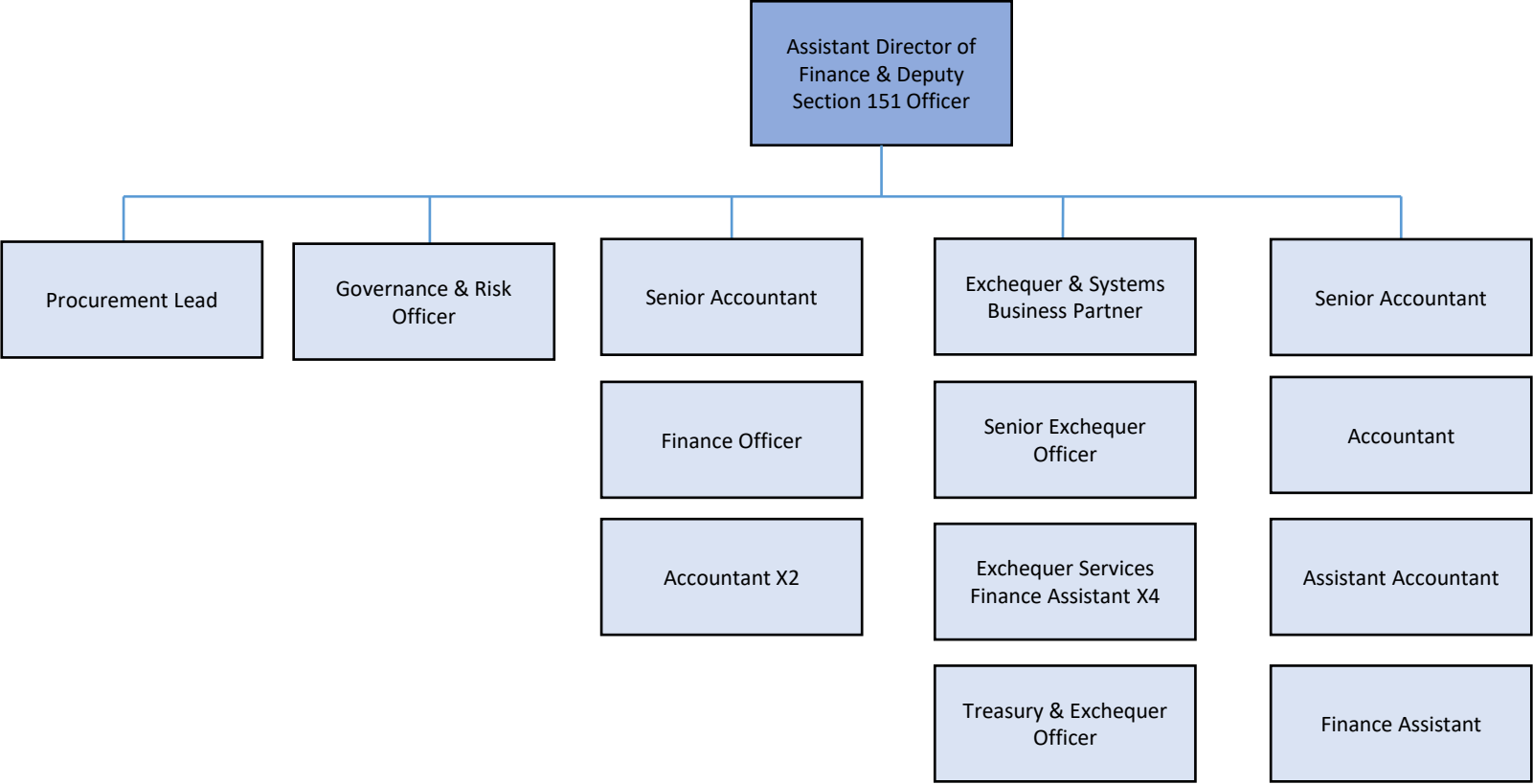




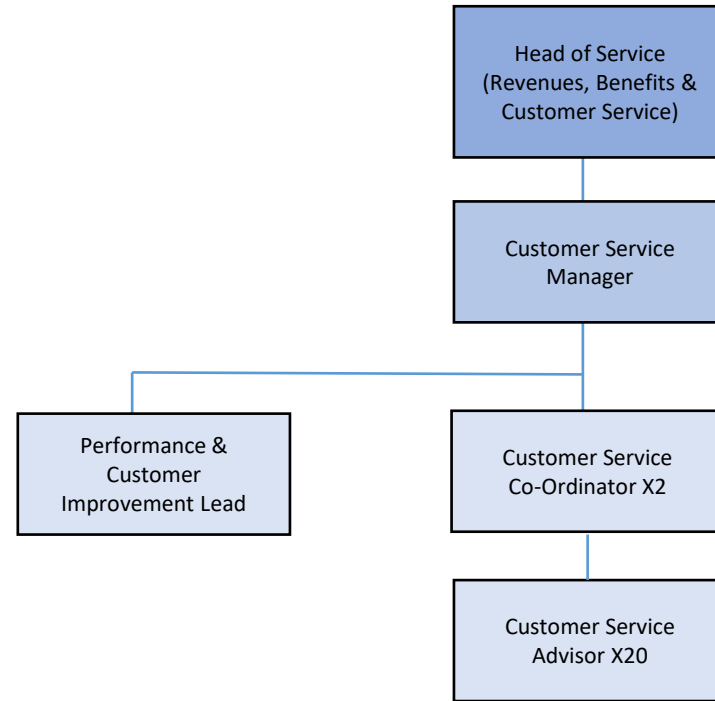
WASTE & RECYCLING



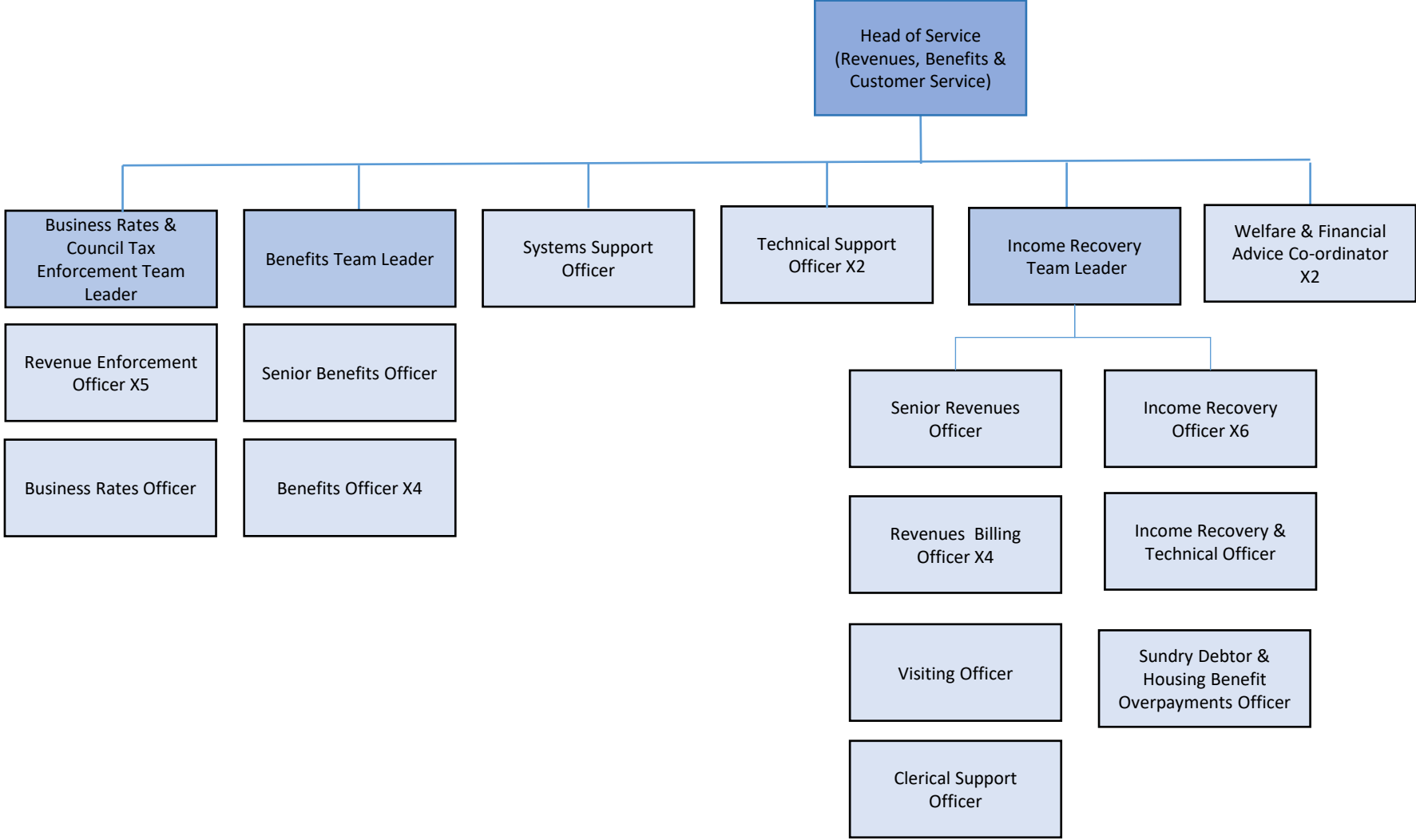
FINANCE

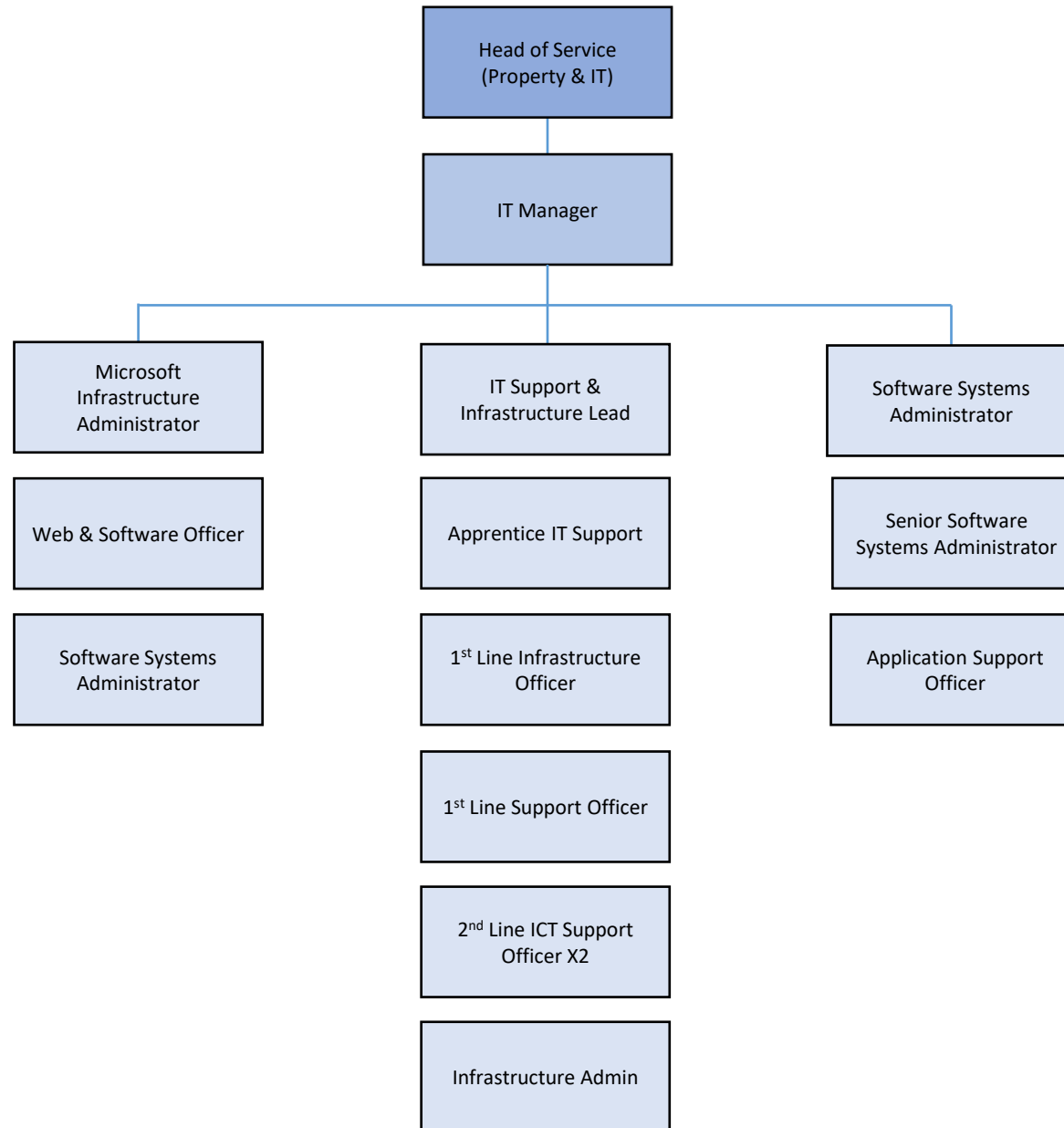


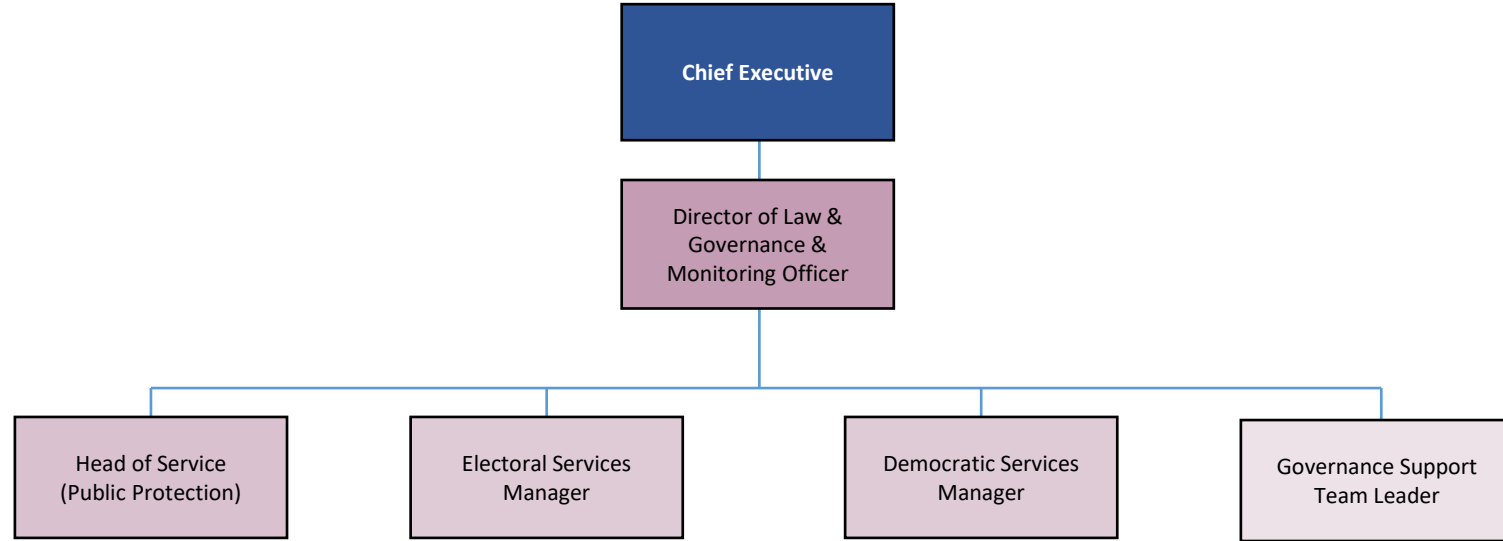
CUSTOMER SERVICE

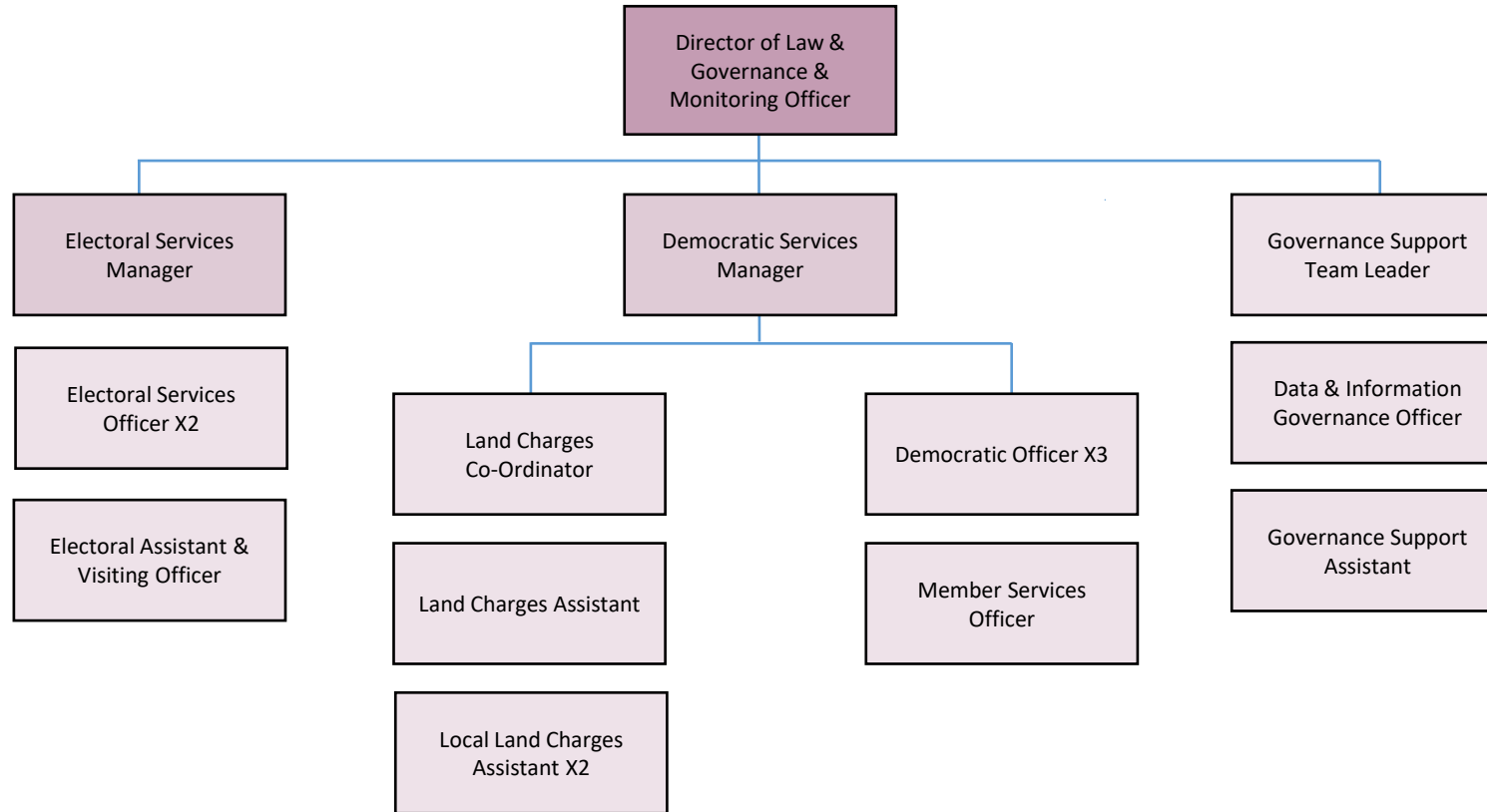


REVENUES & BENEFITS

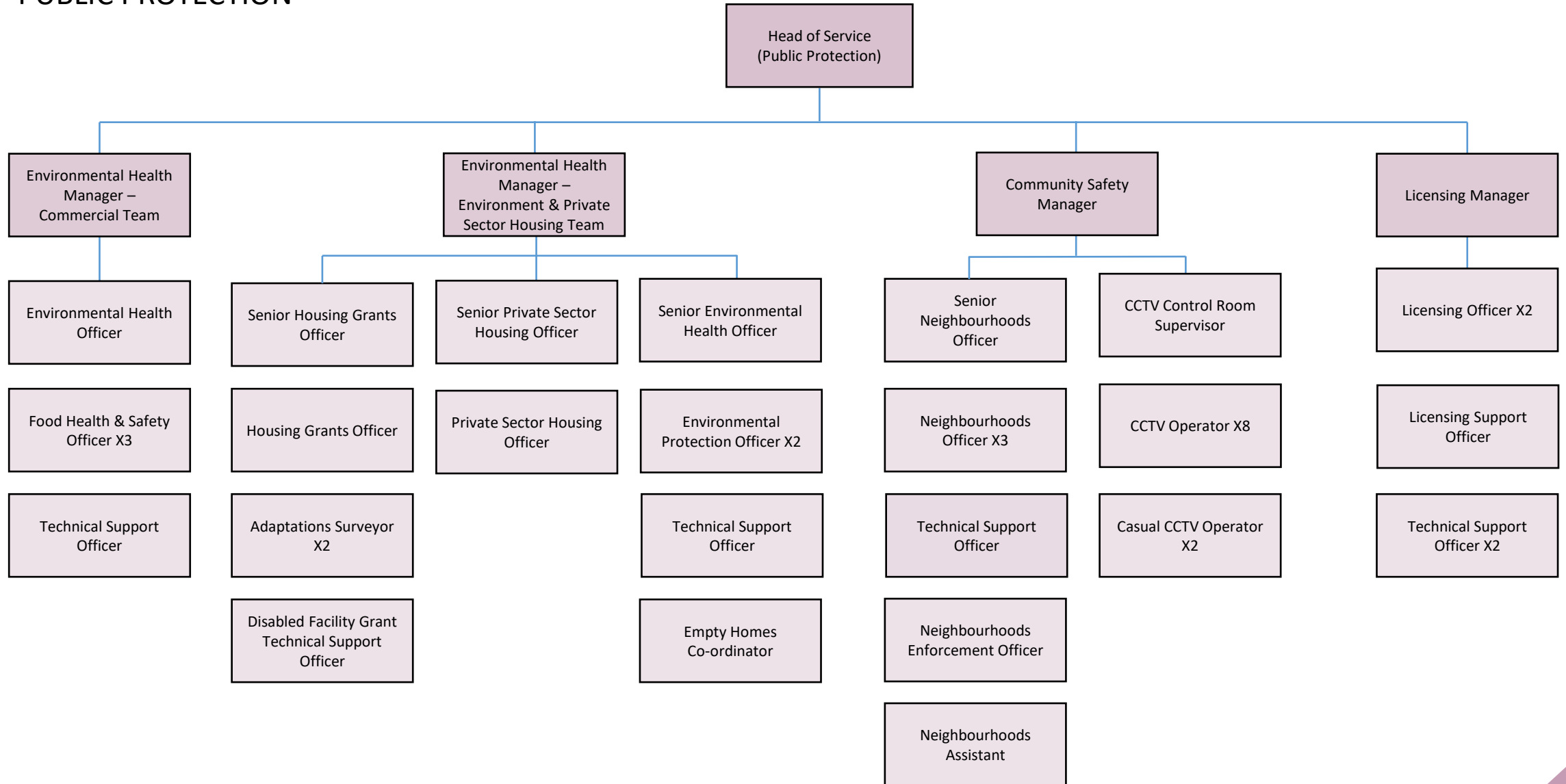








PUBLIC PROTECTION



HUMAN RESOURCES

