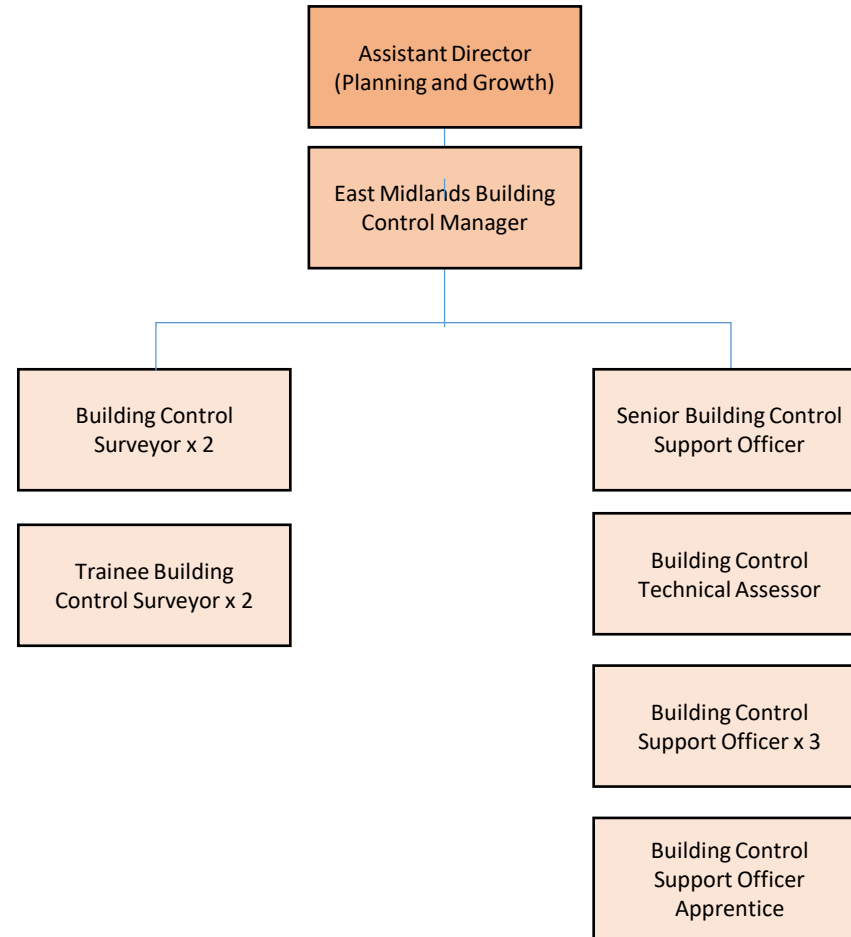
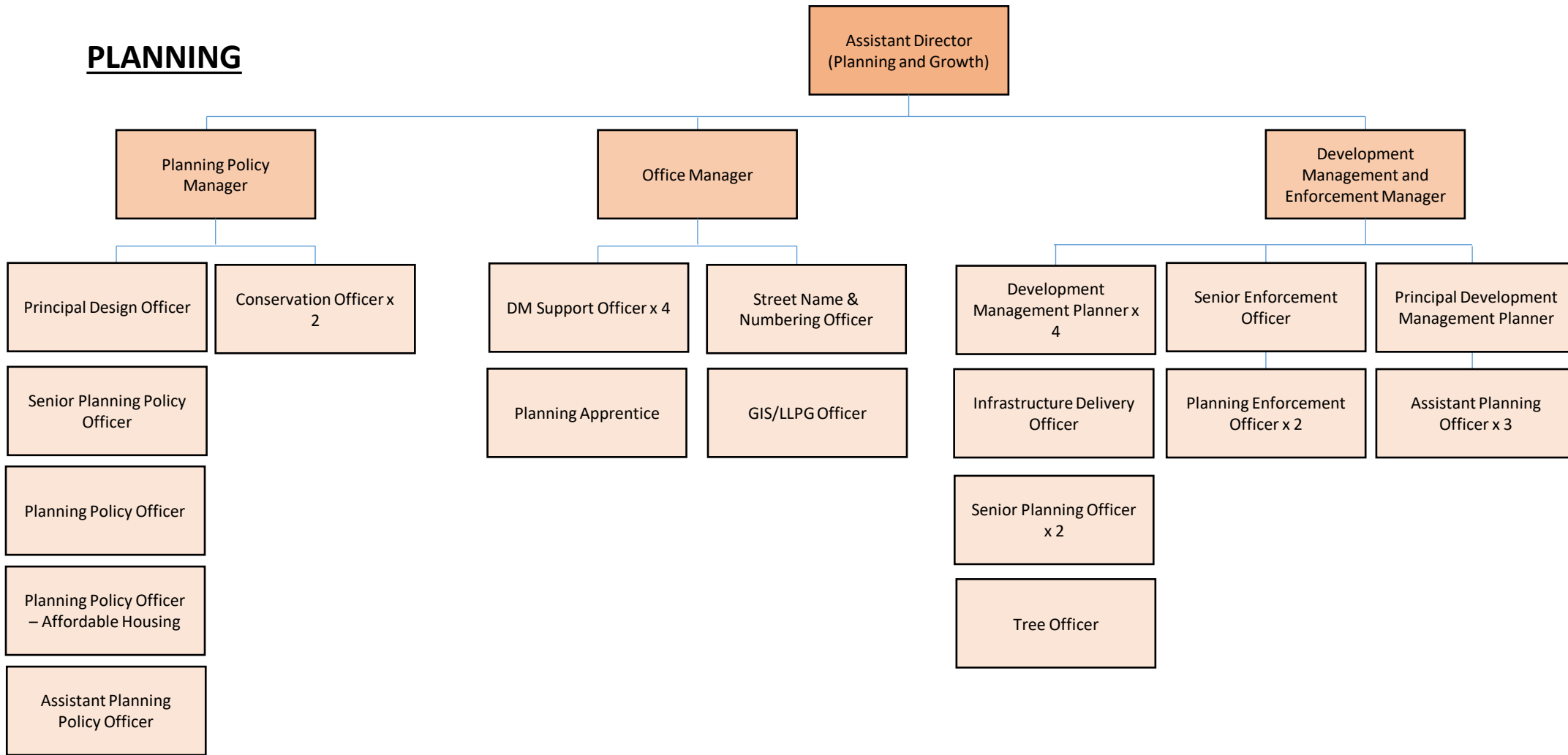


* Please note that numbers refer to headcount and not FTE

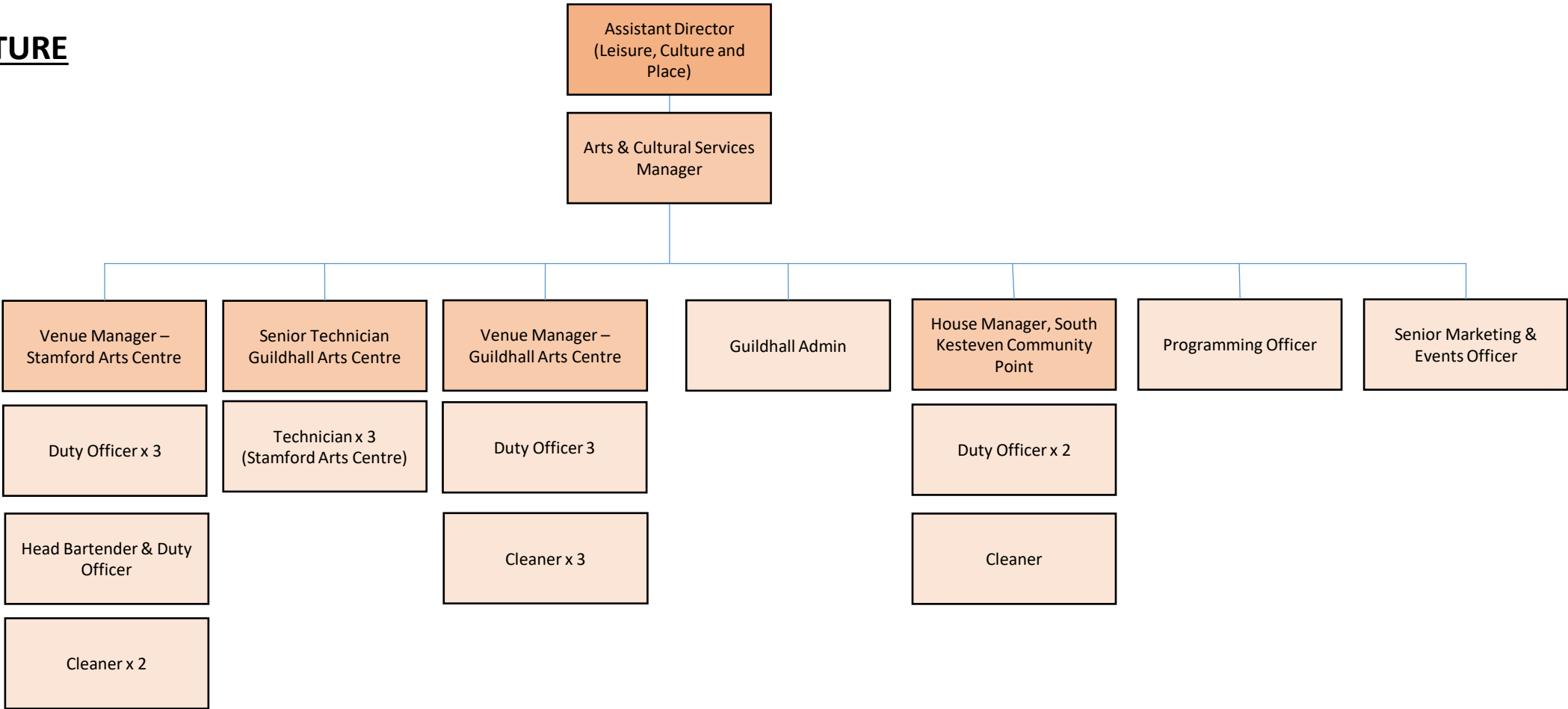
BUILDING CONTROL



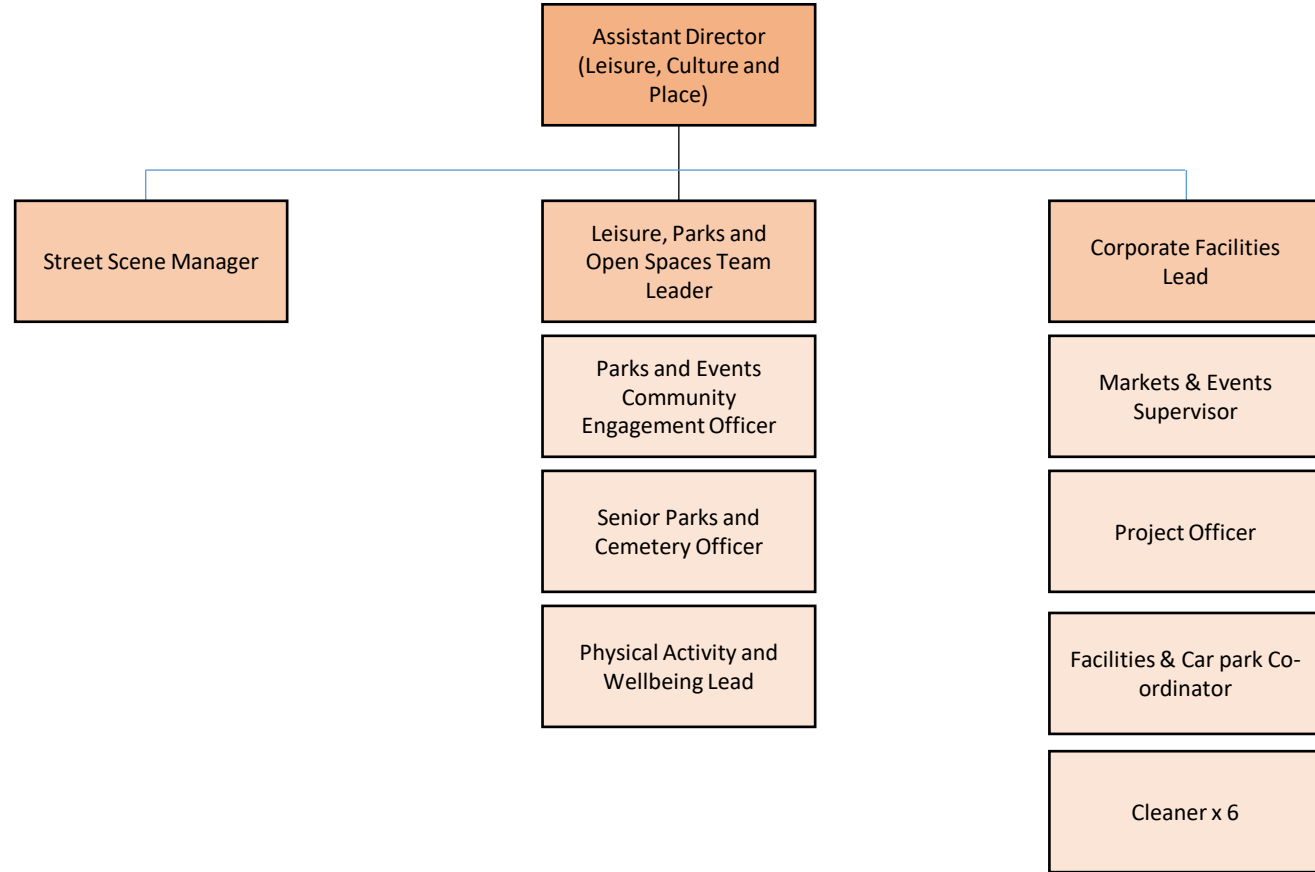
PLANNING



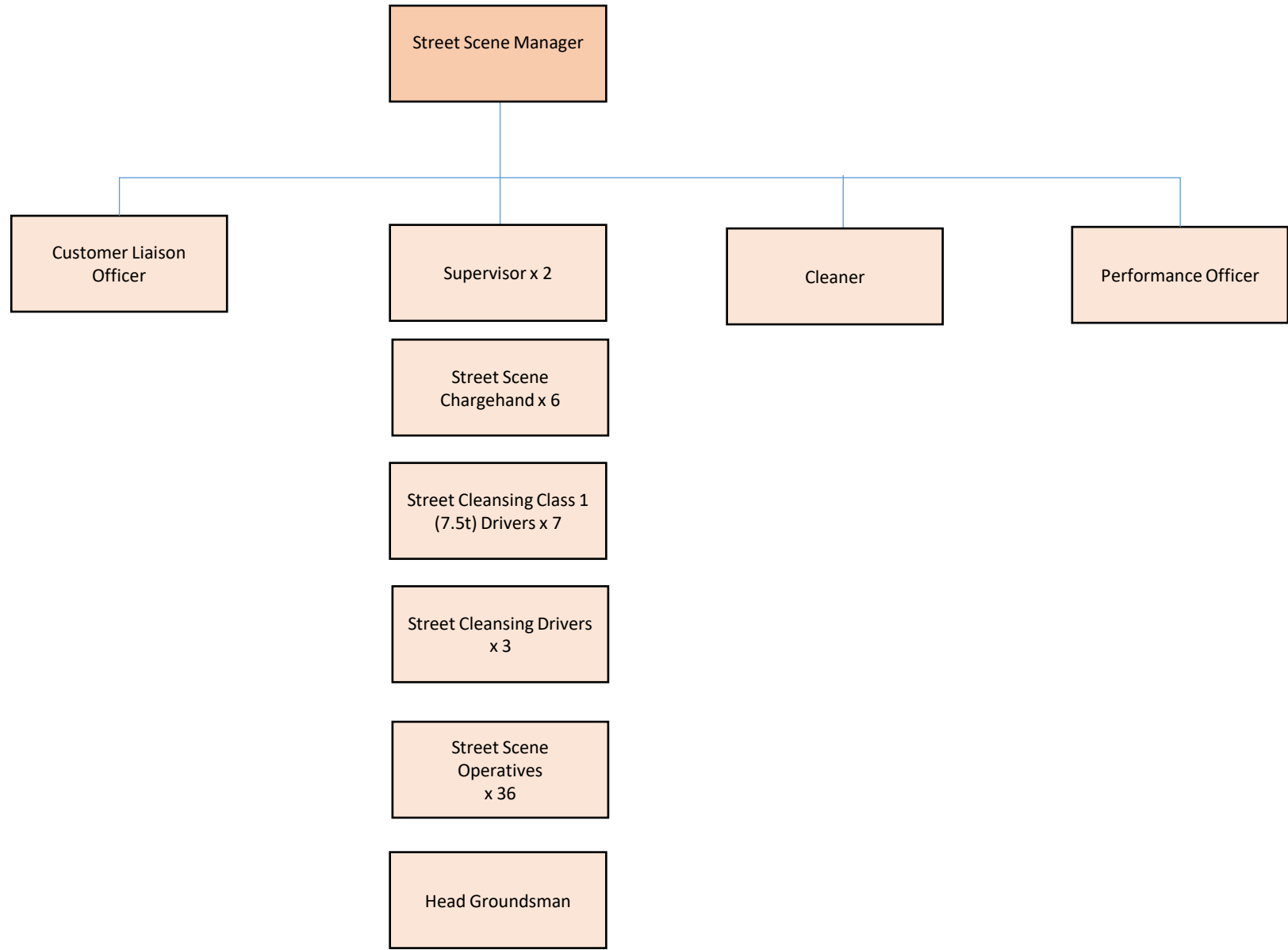
ARTS AND CULTURE



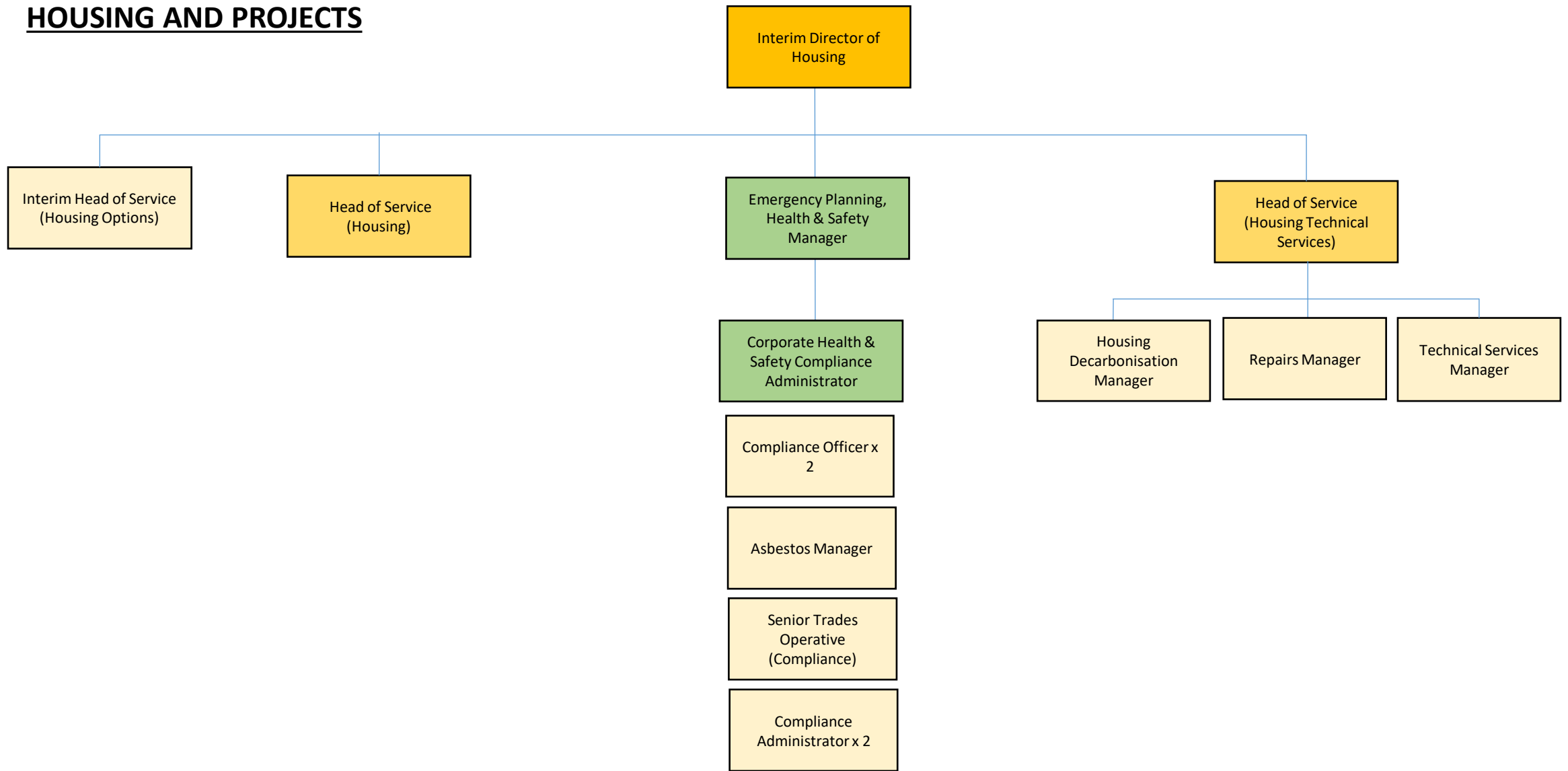
PARKS AND LEISURE



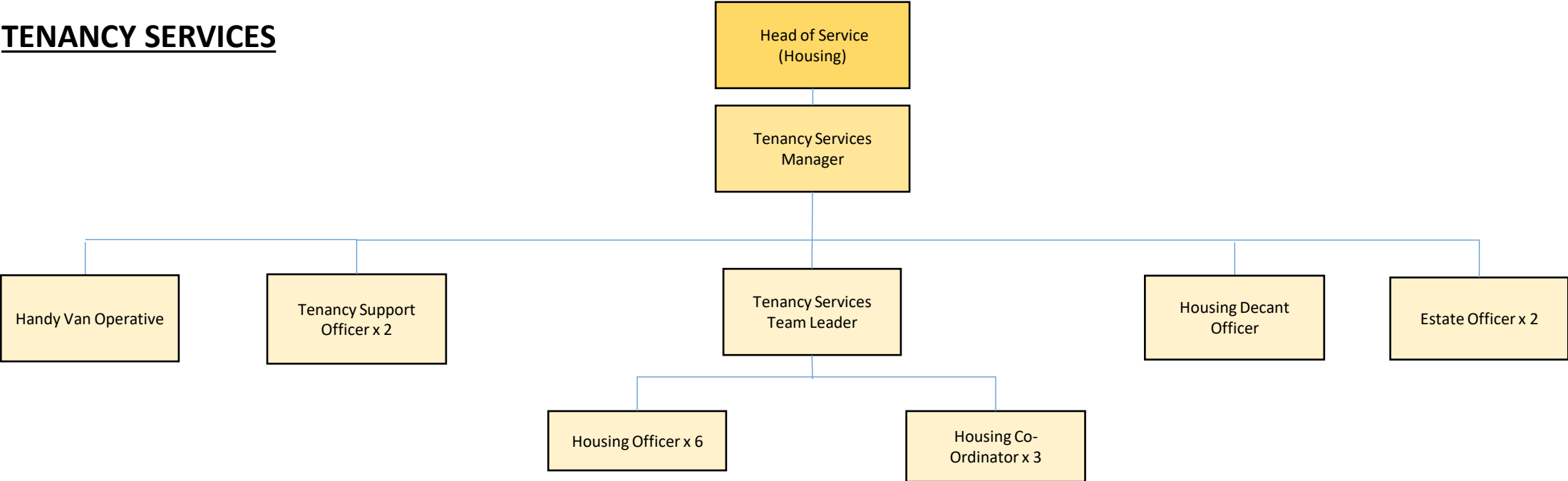
STREET SCENE



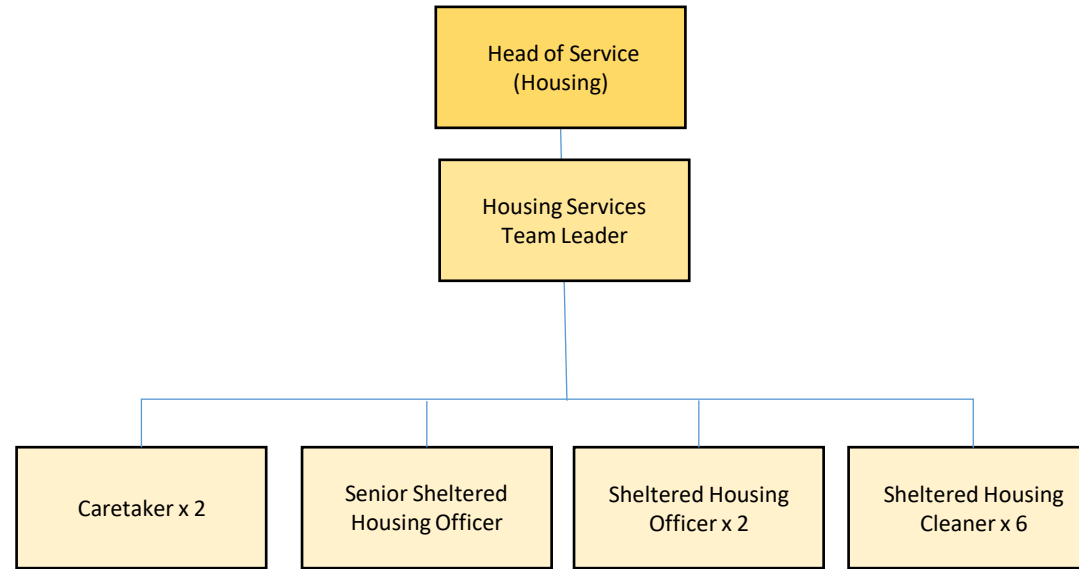
HOUSING AND PROJECTS



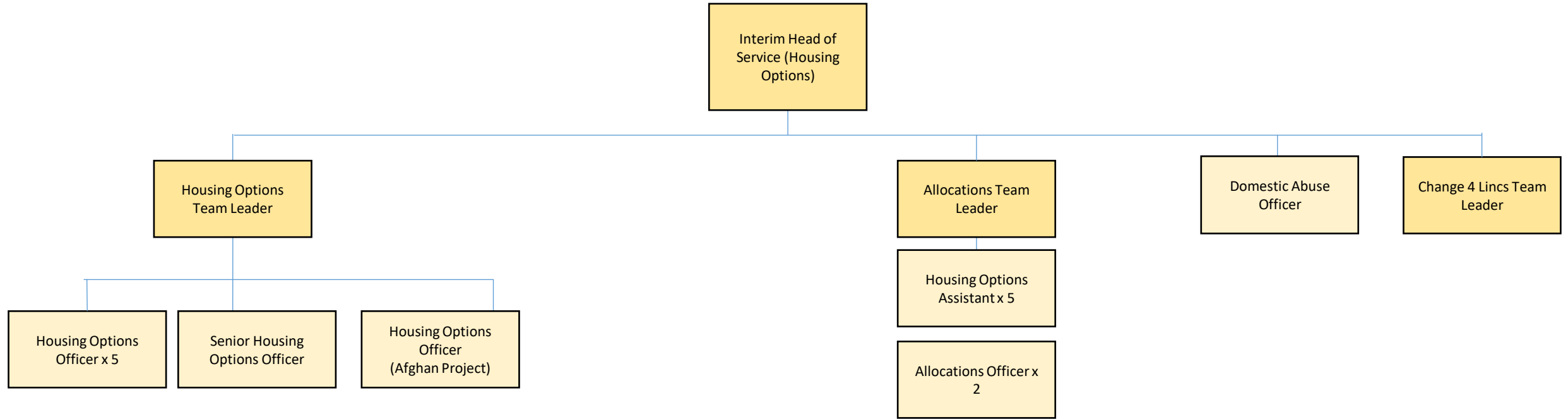
TENANCY SERVICES

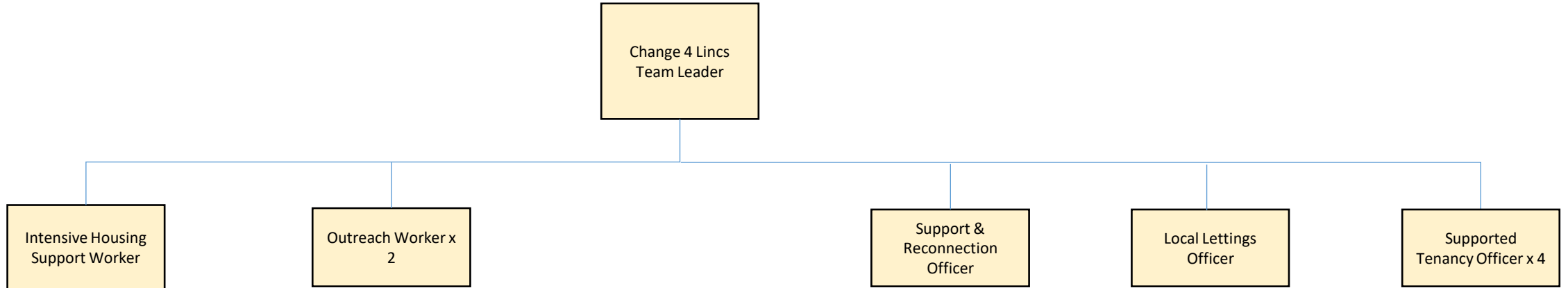


SHELTERED HOUSING



HOUSING OPTIONS

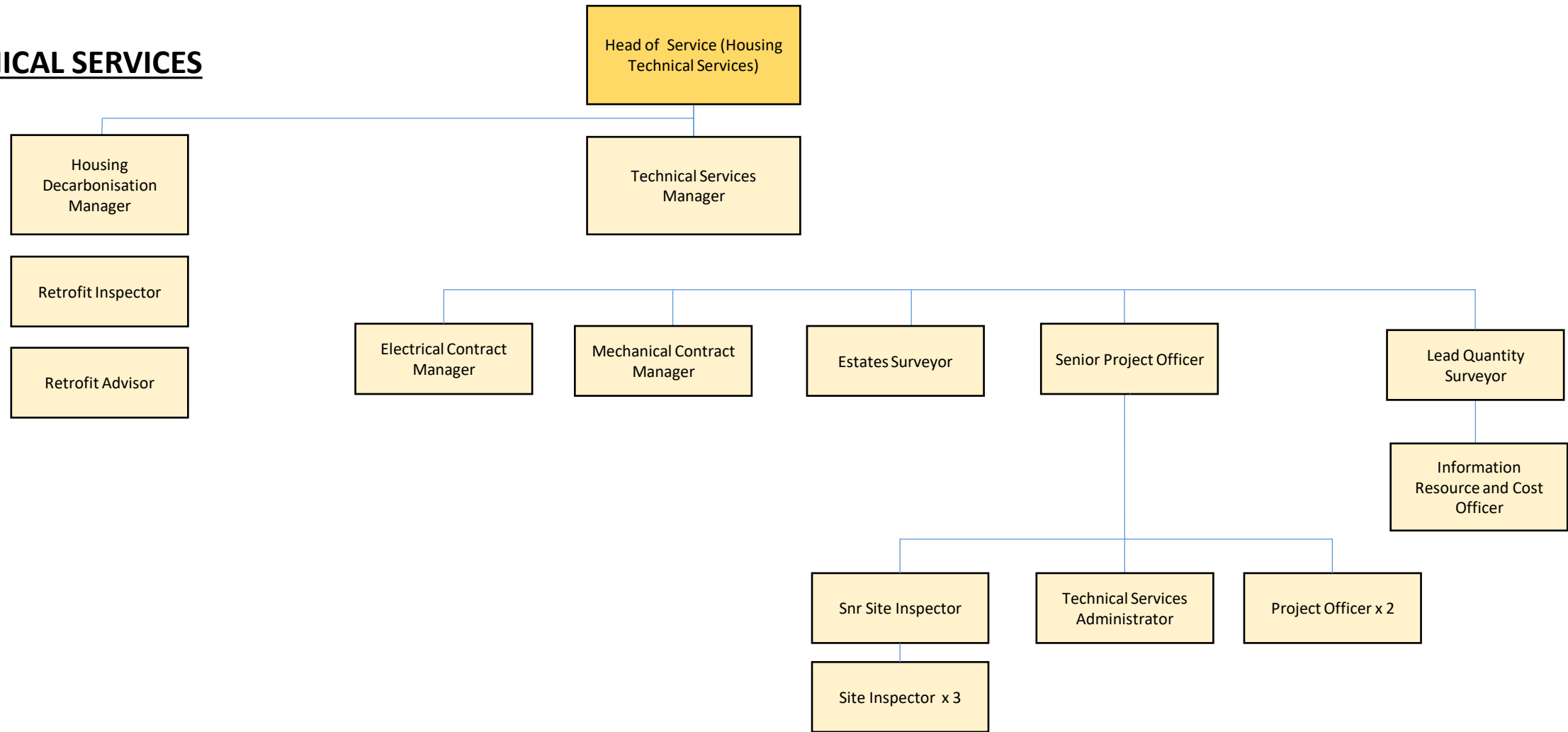




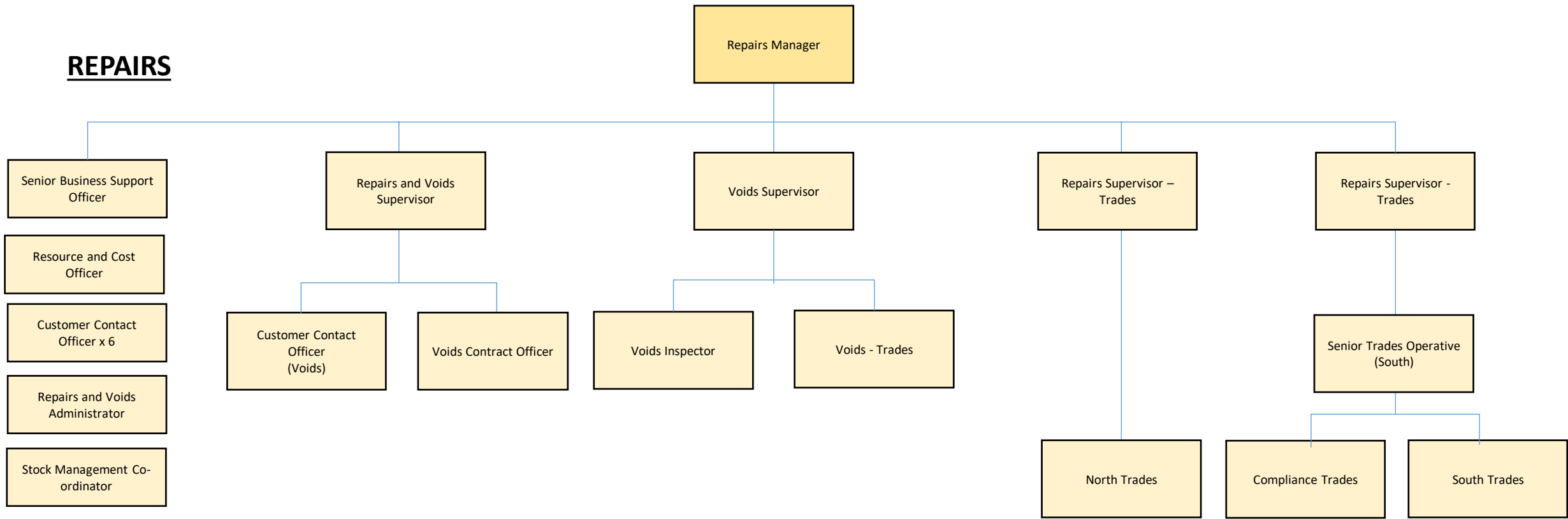
This is a partnership project of 4 Lincolnshire authorities working collaboratively to prevent rough sleeping in line with statutory responsibilities:

- North Kesteven District Council (NKDC)
- West Lindsey District Council (WLDC)
- South Holland District Council (SHDC)
- South Kesteven District Council (SKDC)

TECHNICAL SERVICES



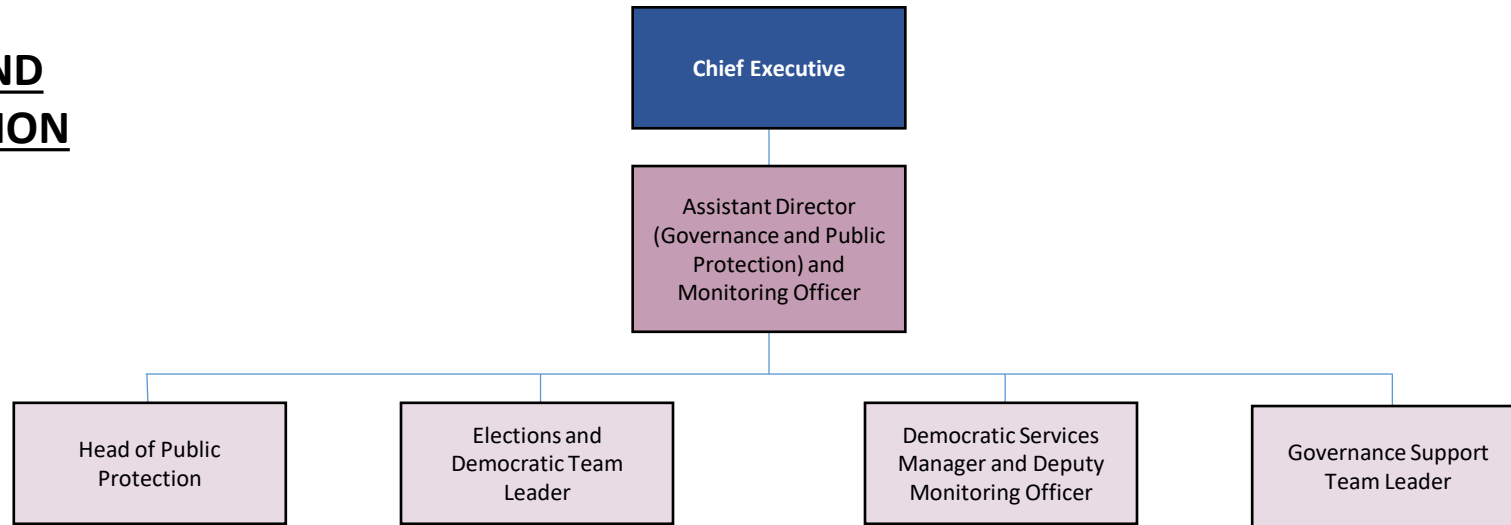
REPAIRS



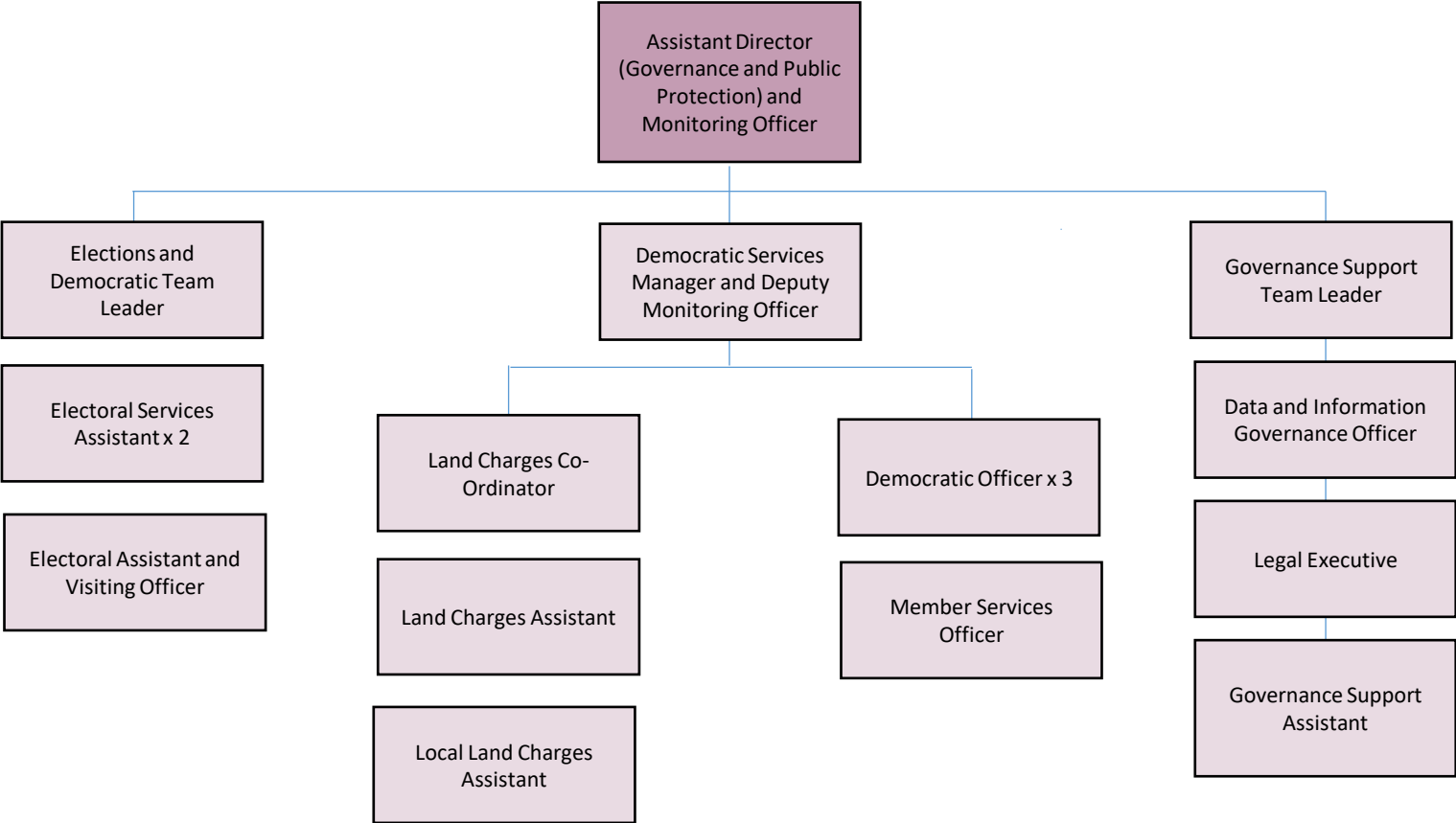
HUMAN RESOURCES



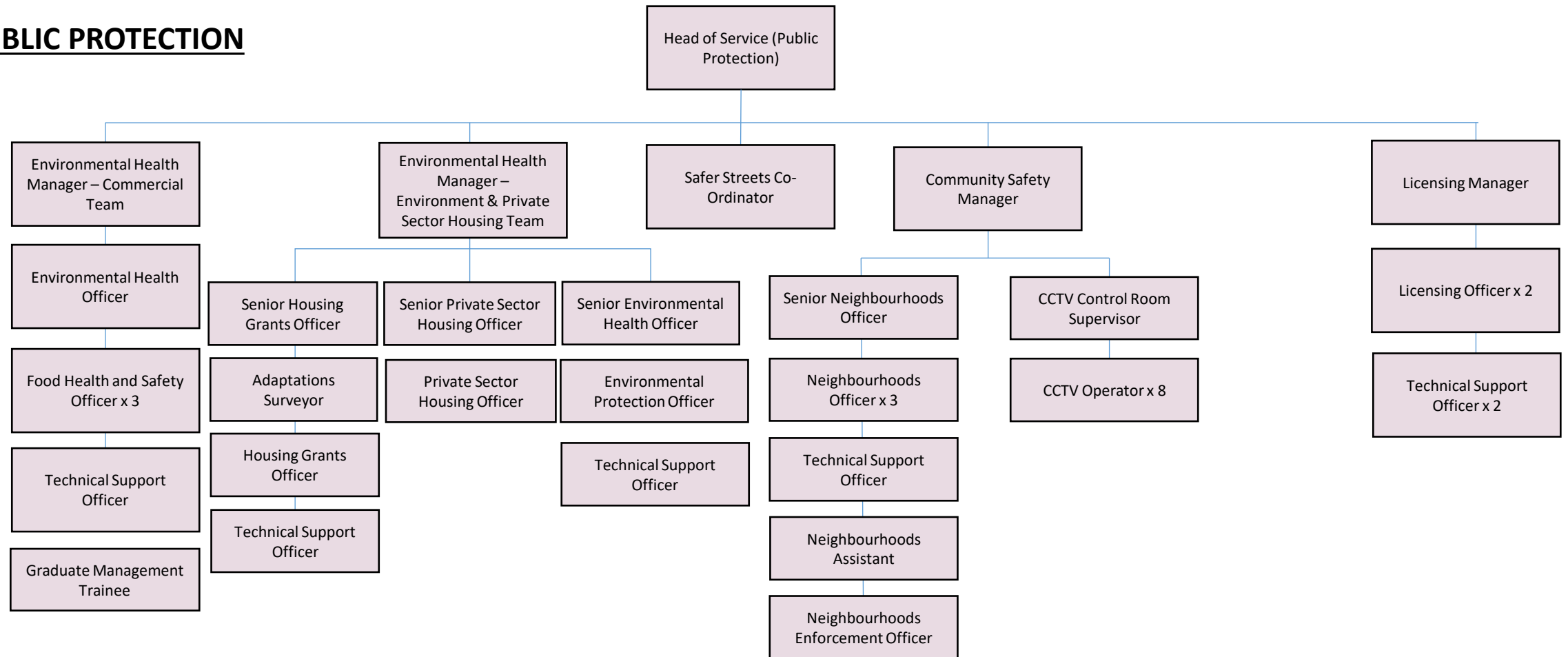
**GOVERNANCE AND
PUBLIC PROTECTION**



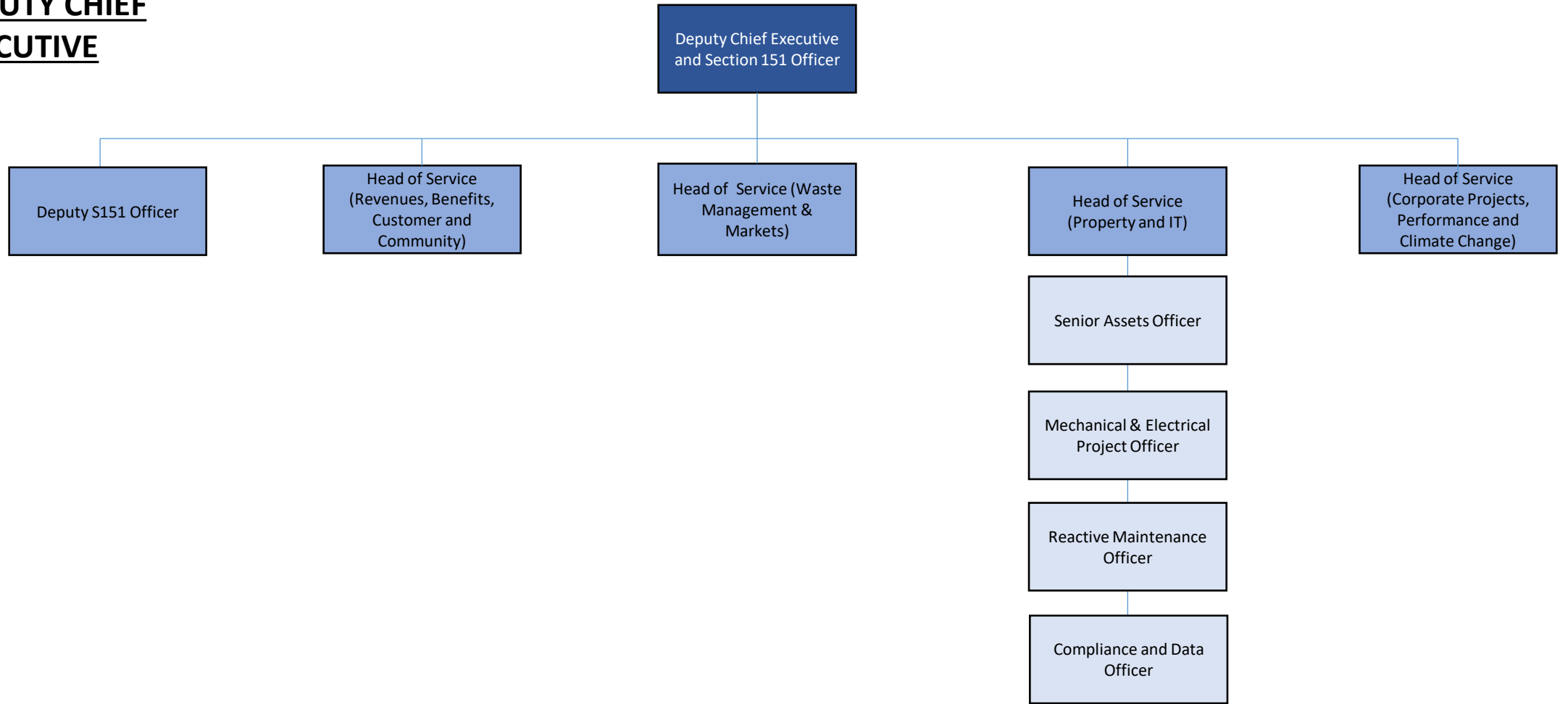
GOVERNANCE

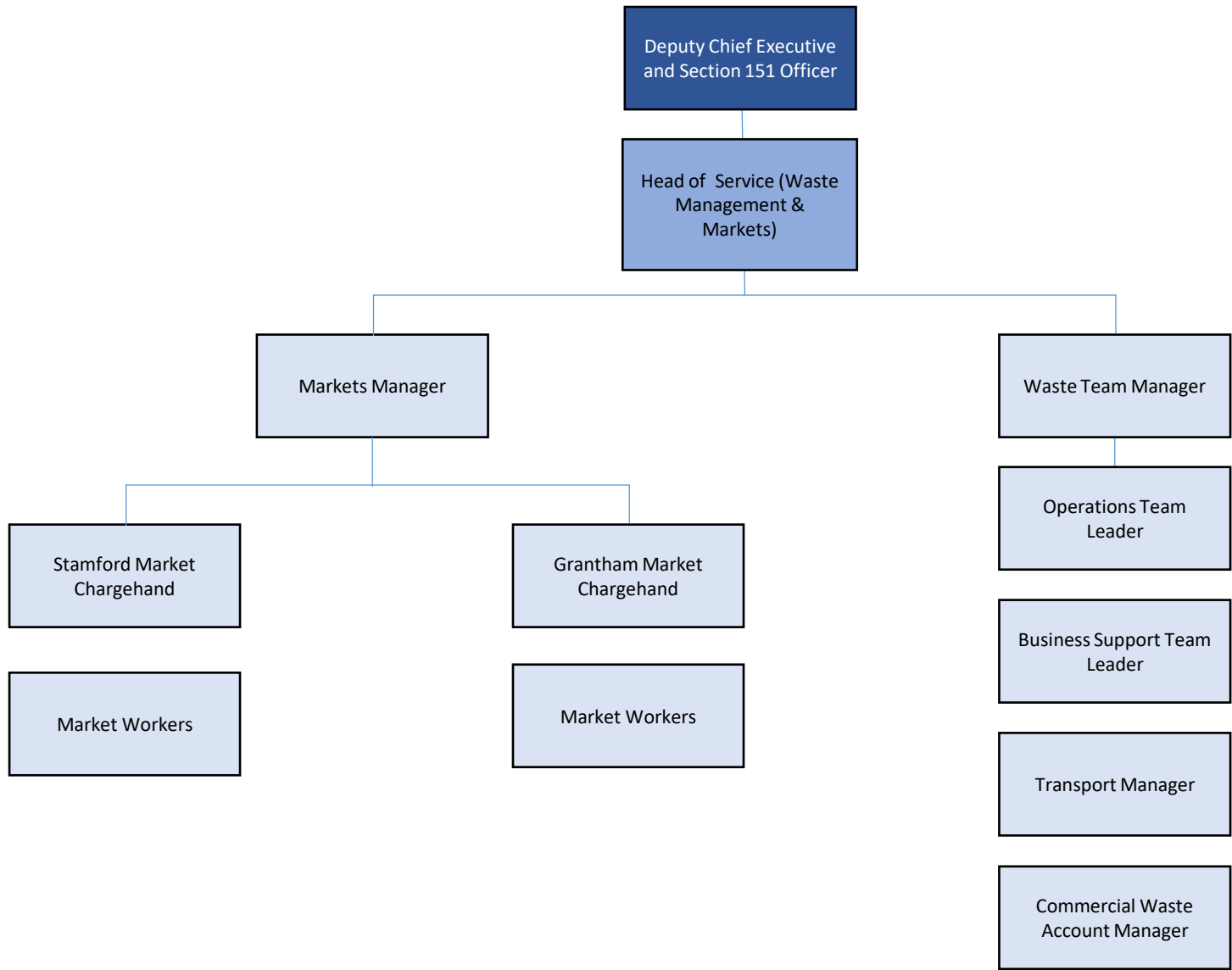


PUBLIC PROTECTION

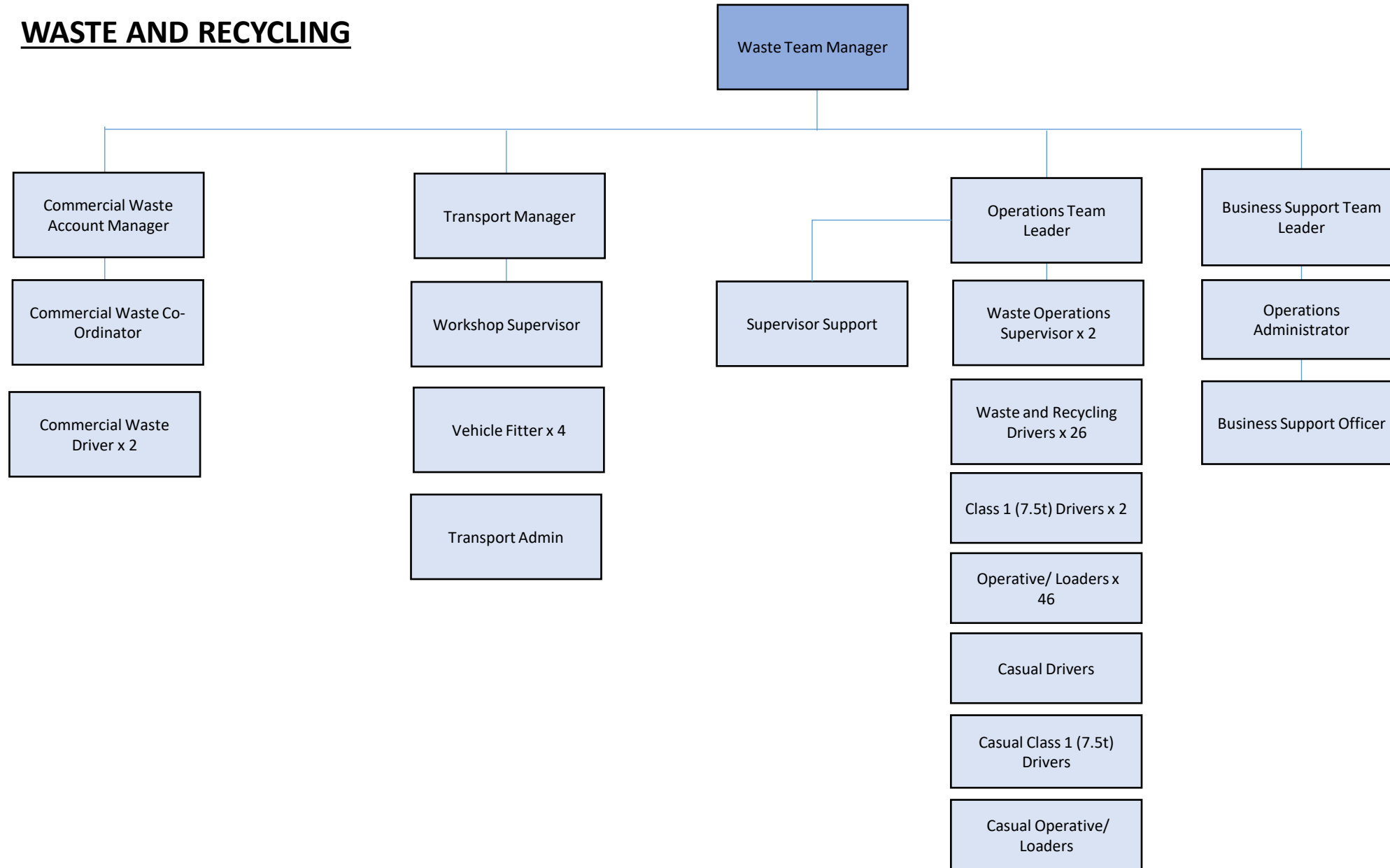


DEPUTY CHIEF EXECUTIVE

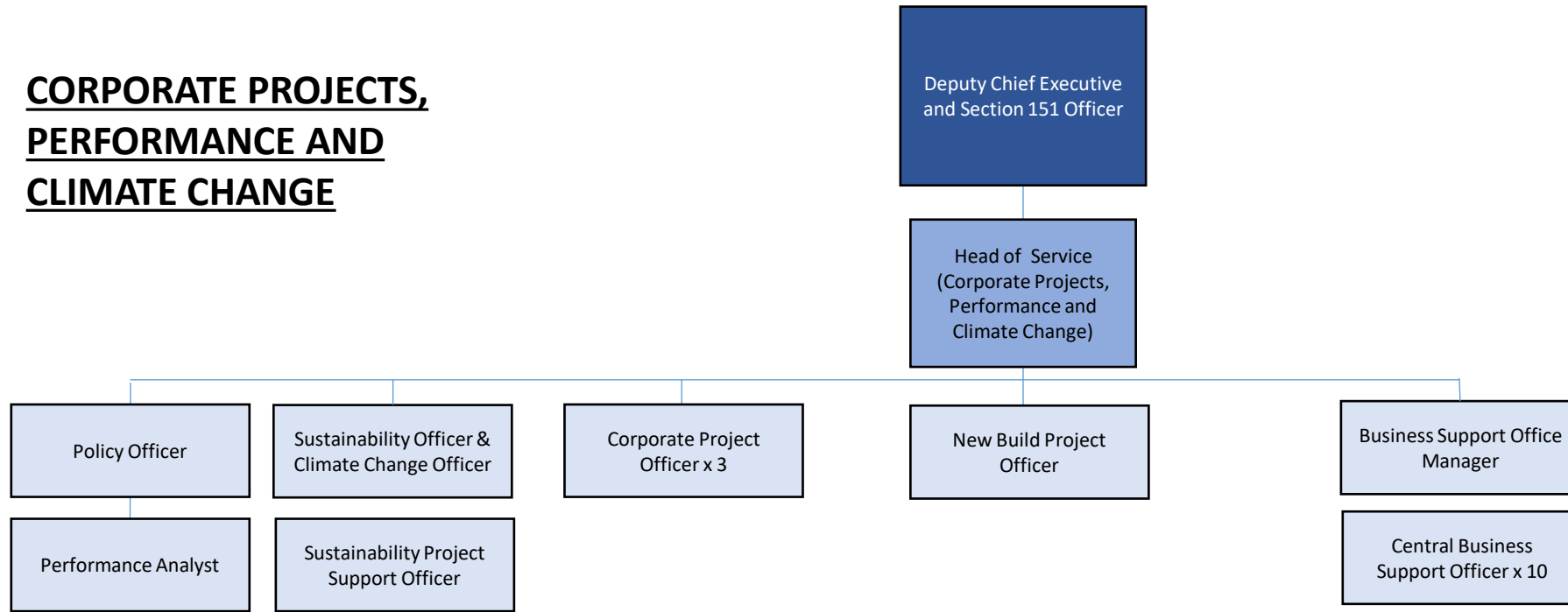




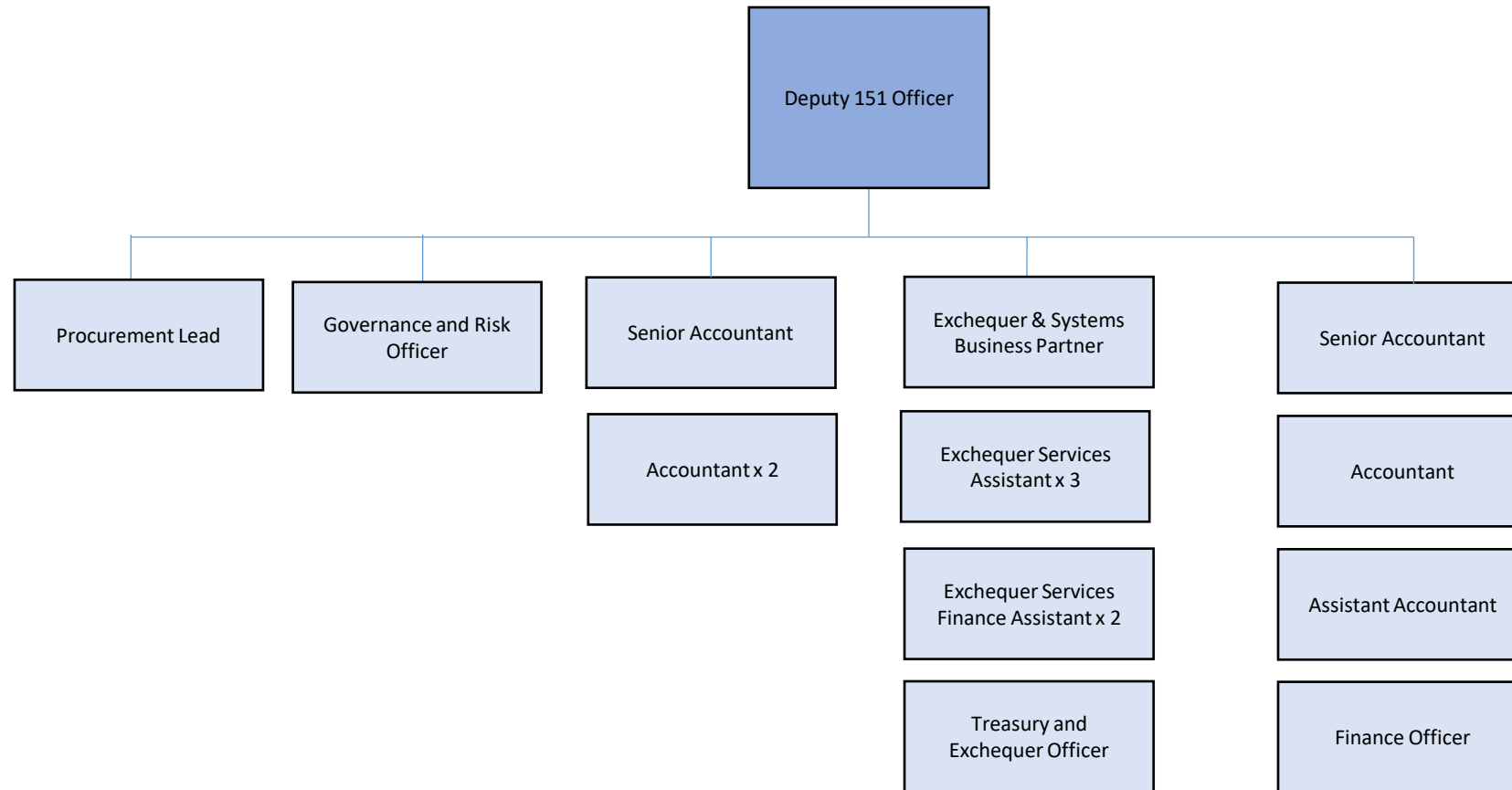
WASTE AND RECYCLING



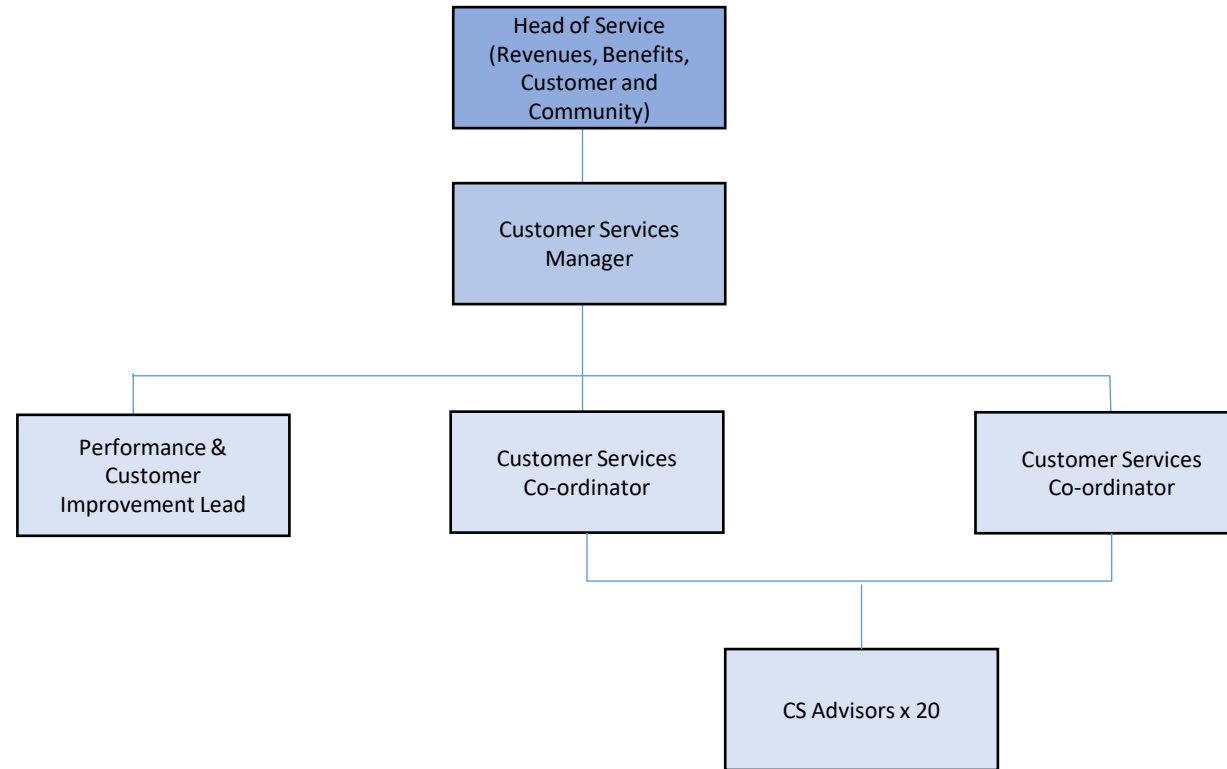
CORPORATE PROJECTS,
PERFORMANCE AND
CLIMATE CHANGE



FINANCE



REVENUES, BENEFITS AND CUSTOMER SERVICES



REVENUES AND BENEFITS

Head of Service
(Revenues, Benefits,
Customer and
Community)

