

# South Kesteven 2021/22



SOUTH  
KESTEVEN  
DISTRICT  
COUNCIL

The Police and Crime Commissioner  
for Lincolnshire

Lincolnshire  
COUNTY COUNCIL  
*Working for a better future*



## Contacting your authorities

We can provide the information in this booklet in Braille, large type or other languages if required. Please contact South Kesteven District Council at the address below.

### South Kesteven District Council

Council Offices, St Peter's Hill, Grantham,  
Lincolnshire, NG31 6PZ

**General enquiries:** 01476 40 60 80

**Council Tax enquiries:**

email: [revenuesofficer@southkesteven.gov.uk](mailto:revenuesofficer@southkesteven.gov.uk)

**Business rates enquiries:**

email: [ndr@southkesteven.gov.uk](mailto:ndr@southkesteven.gov.uk)

**Housing Benefit & Council Tax Support:**

email: [benefits@southkesteven.gov.uk](mailto:benefits@southkesteven.gov.uk)

**Payment line:** 0330 088 6753

**Anti-social behaviour helpline:** 0800 1830 279

**Website:** [www.southkesteven.gov.uk](http://www.southkesteven.gov.uk)

**Customer service offices,**

**Grantham:** St Peter's Hill, NG31 6PZ

**Bourne:** South Kesteven Community Point &  
Library, 3 Abbey Road, PE10 9EF

Please call or check website for opening times

**Website:** [www.southkesteven.gov.uk](http://www.southkesteven.gov.uk)

### Lincolnshire County Council

County Offices, Newland, Lincoln LN1 1YL

**General enquiries:** 01522 55 22 22

**Email:** [customer\\_services@lincolnshire.gov.uk](mailto:customer_services@lincolnshire.gov.uk)

**Minicom service:** 01522 55 20 55

**Website:** [www.lincolnshire.gov.uk](http://www.lincolnshire.gov.uk)

*If you would like any more information on the county council's budget for 2021/22, please email [finance@lincolnshire.gov.uk](mailto:finance@lincolnshire.gov.uk) or visit [www.lincolnshire.gov.uk/finance](http://www.lincolnshire.gov.uk/finance)*

### Changes and corrections to your bill

**Please tell SKDC if:**

- > We've sent the bill to the wrong person
- > You've moved house
- > We've calculated your bill incorrectly
- > We've calculated your Council Tax Support incorrectly

> You should receive: a discount; an exemption; a disabled band reduction; or Council Tax Support

> You should no longer receive: a discount; an exemption; a disabled band reduction; or Council Tax Support

**To contact us about Benefits, Business Rates and Council Tax, see the details on the left.**

### Benefit Fraud

We take the prevention and detection of fraud very seriously. You will be committing fraud if you make a false statement, or knowingly fail to tell us about any changes to:

- Money held in bank accounts, savings and investments
- Income you receive
- People living in your household and their circumstances

It is essential that you tell us immediately if you have a change of circumstances by emailing [benefits@southkesteven.gov.uk](mailto:benefits@southkesteven.gov.uk)

If you suspect fraud is being committed please telephone: Housing Benefit – National Benefit Fraud Hotline 0800 854 4400

You can also report this online at: [www.gov.uk](http://www.gov.uk)

### Lincolnshire Police and Crime Commissioner

Office of the Police & Crime Commissioner  
Deepdale Lane, Nettleham, Lincoln LN2 2LT

**Tel:** 01522 94 71 92

**Fax:** 01522 55 87 39

**Email:** [Lincolnshire-pcc@lincs.pnn.police.uk](mailto:Lincolnshire-pcc@lincs.pnn.police.uk)

**Lincolnshire Police General Enquiries**

**Tel:** 101 (your call may be recorded)

**Emergencies:** 999 and ask for police

**Minicom/textphone:** 01522 55 81 40

**Website:** [www.lincs.police.uk](http://www.lincs.police.uk)

# Your Council Tax explained

## Where does your Council Tax go?

South Kesteven District Council collects the Council Tax. However, we keep less than one tenth of it. The rest is transferred to Lincolnshire County Council, the Police Authority and Parish and Town Councils, as detailed on pages 6 and 16.

## What is Council Tax and who has to pay?

Council Tax is a tax based on the value of residents' homes. Council and police services are paid for by income from Government grants, Council Tax, fees and other charges.

Owner-occupiers and their partners usually have to pay the Council Tax bill. Where homes are rented, the tenants and their partners will have to pay. In the case of empty homes, it's normally the owner who has to pay.

The owners of these properties also have to pay:

- > Residential care homes, nursing homes and hostels, and
- > Those occupied by
  - a minister of religion or a religious community
  - more than one household or resident, staff or asylum seekers

Please contact us if you have been made the liable person, but you believe this is incorrect.

## What are valuation bands – can you appeal?

The Valuation Office, an executive agency of HM Revenue and Customs, has given each property a valuation band, between A and H, according to its market value in April 1991. If your property was built after April 1991, it will be valued as if it had existed then. The Valuation Office Agency (VOA) values domestic properties for Council Tax. This valuation is used to set your Council Tax band. You might need to contact the VOA if you

think your Council Tax band is wrong. You can find out more about when you can challenge your band and what you need to do at [gov.uk/challenge-council-tax-band](http://gov.uk/challenge-council-tax-band). If you challenge your band, you must continue to pay Council Tax at your current band until your appeal is decided.

Band	Market value (at April 1991)
A	Up to £40,000
B	£40,001 - £52,000
C	£52,001 - £68,000
D	£68,001 - £88,000
E	£88,001 - £120,000
F	£120,001 - £160,000
G	£160,001 - £320,000
H	More than £320,000

## You can appeal against the valuation band if:

- > It's within six months of you becoming the taxpayer
- > The value changes because of demolition work, a conversion, a change of use or any other physical change to the property's location

## You must carry on paying your Council Tax while your appeal is being considered.

## For more information about valuation bands or appeals, contact:

Valuation Office Agency, Durham Customer Service Centre, Wycliffe House, Green Lane, Durham, DH1 3UW

**Telephone:** 03000 50 15 01

**Website:** [www.gov.uk/contact-voa](http://www.gov.uk/contact-voa)

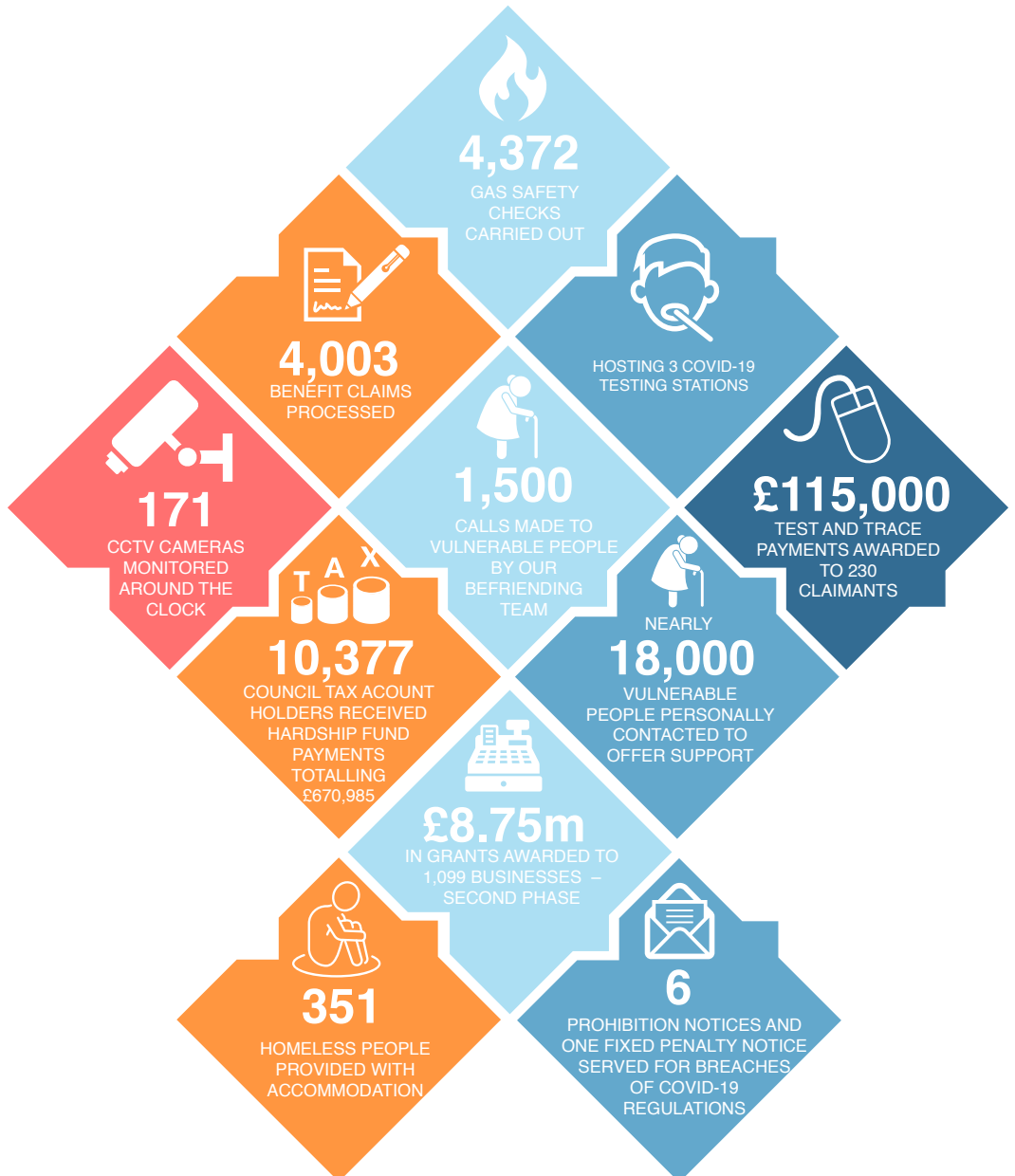
*If your initial appeal fails, you have further avenues of appeal, which will be explained to you by the Valuation Office.*

In common with all local authorities, South Kesteven District Council has a duty to protect the public funds it administers. We are required to participate in data matching exercises, carried out by the Audit Commission's National Fraud Initiative, to prevent and detect fraud.

## What SKDC has been doing for you during the pandemic



## High Performing Council



# Council Tax explained

## Council Tax discounts

You may be able to get a discount if no one lives in your property. The discount on furnished properties, which are no one's sole or main residence, is 10%. A discount of 100% will be awarded for one month on any unoccupied and unfurnished property, followed by a 25% discount for a further five months. After this a full 100% charge applies if it remains unoccupied and unfurnished. If the property remains empty after two years, then a charge of 200% of the council tax will be payable from 1 April 2021, if the property has been unoccupied for more than five years, then a charge of 300% of the Council Tax will be payable. If a property is unoccupied and requires major structural alterations or repairs, a discount of 25% will be awarded for up to 12 months.

You can get a 25% discount on your bill if there is only one person aged 18 or over living in your home. People under 18, or in one of the groups listed below, are NOT included when counting the number of people living in your home for Council Tax purposes:

- > Most full-time students, student nurses and some apprentices
- > The partner of a student or the dependant of a student who is not a British citizen and is not allowed to work in this country or claim benefits
- > People who are long-term patients in hospital or who live in care homes
- > People who are severely mentally impaired
- > 18 and 19 year-olds still eligible for child benefit
- > School and college leavers (from April to October if they are under 20 years-old)
- > Low-paid care workers
- > Residents of homeless hostels or night shelters
- > Carers looking after someone who is not their partner and not a child of their own who is under 18 years-old
- > Members of religious communities
- > Members of visiting armed forces and international institutions

- > Diplomats
- > People who have been detained (except for those in prison for non-payment of fines or Council Tax)

### **Please contact us if:**

- > You think you should be getting a discount
- > You are getting a discount and your circumstances have changed so that you should no longer get it

## Council Tax exemptions

Generally, you don't have to pay Council Tax on the classes of property listed in the two sections that follow because they are exempt. Some classes do have time limits though and you may have to pay a charge after the exemption runs out. Please note that time limits run from when the circumstances of the exempt class first started to apply, and they don't restart if the property changes hands.

### **Classes of exempt EMPTY property:**

**Class B** - owned by a charity (exempt for up to six months only)

**Class D** - the taxpayer has been detained (except for those in prison for non-payment of fines or Council Tax)

**Class E** - the taxpayer has left the property to live in a care home

**Class F** - the taxpayer has died (exempt for up to six months after probate granted)

**Class G** - can't be lived in by law

**Class H** - held for a minister of religion

**Class I** - the taxpayer has gone to live elsewhere to receive personal care

**Class J** - the taxpayer has gone to live elsewhere to provide personal care

**Class K** - left empty by a student

**Class L** - the mortgagee has possession

**Class Q** - the taxpayer is trustee to a bankrupt

**Class R** - unused caravan pitch or boat mooring

**Class T** - unoccupied annexe to occupied property



## Council Tax explained

### Classes of exempt OCCUPIED property:

**Class M** - student halls of residence

**Class N** - all occupiers are students, school or college leavers or non-British dependants or partners of students

**Class O** - UK armed forces accommodation

**Class P** - visiting forces accommodation

**Class S** - all occupiers are under 18

**Class U** - all occupiers are severely mentally impaired

**Class V** - main residence of a person with diplomatic privilege or immunity

**Class W** - the annexe to a property occupied by a dependant relative.

### Penalties

You must notify us of a change in circumstances within 21 days. Failure to do so could result in a penalty of £70 being imposed.

### People with disabilities

You can get your bill reduced by one valuation band if you have a second bathroom, a second kitchen, a special room, or enough floor space to use a wheelchair indoors and the facility is necessary to meet the needs of anyone in the home who is disabled. If you qualify for this reduction, you will have to renew your application annually.

### Claiming Council Tax Support

Don't pay more Council Tax than you need to. Council Tax Support can reduce your bill by as much as 100% if one of these applies:

- > You have reached the qualifying age for state pension
- > You are disabled, a carer, or a war pensioner
- > Your savings and investments are valued below £16,000
- > The income we have to take into account is low enough for you to qualify

Most working age claimants can only receive Council Tax Support up to 80% of their Council Tax bill.

Even if you own your own home and are working you may still be able to get this support.

And even if you don't qualify for any help in your

own right, you may be able to get another type of reduction. This is where someone on a low income is living with you, who is over 18 and not your partner or paying rent to you. This is called Second Adult Rebate.

### Help with your rent

If you rent your home and have a low income, you may be eligible to claim Universal Credit to help pay your rent. Please visit [www.gov.uk/universal-credit](http://www.gov.uk/universal-credit). You can also visit [www.southkesteven.gov.uk](http://www.southkesteven.gov.uk) which includes a benefit calculator to indicate where you may qualify for assistance. Alternatively, if you are in temporary / supported accommodation, a pensioner, or pay ground rent the quickest way to make a claim is online at [www.southkesteven.gov.uk/Benefits-And-Support](http://www.southkesteven.gov.uk/Benefits-And-Support)

### How to claim Council Tax Support

The quickest way to claim Council Tax Support or Second Adult Rebate is online at [www.southkesteven.gov.uk/Benefits-And-Support](http://www.southkesteven.gov.uk/Benefits-And-Support)

### Are you finding it hard to pay

This booklet contains information about many discounts, exemptions, banding reductions and benefits that can help to reduce your bill. We can advise further on any of these schemes.

If you don't qualify or are already receiving some help, and are still finding it hard to pay, contact us as soon as possible to discuss your payments.

The Citizens Advice (CA) gives free impartial advice to people struggling with various debts.

Email [www.southkestevenca.co.uk](mailto:www.southkestevenca.co.uk)

CA has offices in Stamford, Bourne and

Grantham. The CA Advice Line is 0344 411 1444.

[www.citizensadvice.southlincs.org.uk](http://www.citizensadvice.southlincs.org.uk)

The Council has the discretion to give Council Tax hardship discounts. These are given in cases of severe financial hardship. If you think this might apply to you, please contact us for more information on 01476 40 60 80.

# Council Tax explained

## Your Council Tax for 2021/22

	Band A	Band B	Band C	Band D	Band E	Band F	Band G	Band H
COUNTY	£909.44	£1,061.01	£1,212.59	£1,364.16	£1,667.31	£1,970.45	£2,273.60	£2,728.32
POLICE	£177.54	£207.13	£236.72	£266.31	£325.49	£384.67	£443.85	£532.62
DISTRICT	£103.32	£120.54	£137.76	£154.98	£189.42	£223.86	£258.30	£309.96
TOTAL	£1,190.30	£1,388.68	£1,587.07	£1,785.45	£2,182.22	£2,578.98	£2,975.75	£3,570.90

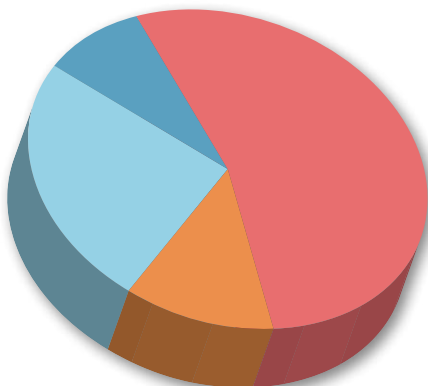
**In addition to the above charges you may receive a charge for Parish/Town Council expenses and Special Expenses incurred in Grantham, Stamford, Bourne and Langtoft. Please see the back page of this leaflet for the additional charges.**

The council has taken the decision to increase its portion of the Council Tax, including special expenses by £5.

This increase will contribute towards the funding of frontline services and enable investment in the delivery of priorities.

The financial outlook remains very challenging and the council is focused on continuing to drive savings, deliver efficiencies and introduce new ways of working to reduce costs and generate new income streams.

## Where the money comes from



Council Tax	54%
Reserves	12%
Business Rates	25%
Government Grants	9%



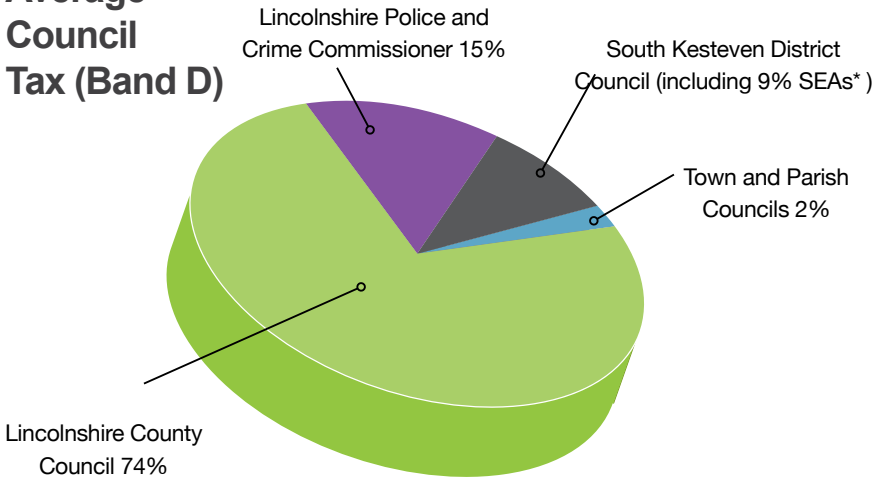
# Council Tax explained

## Total Council Tax Budget Requirement

2020/21		2021/22
Net Expenditure £ 000		Net Expenditure £ 000
9,675	District Council tax requirement	9,962
64,093	Lincolnshire County Council tax requirement	65,647
12,045	Police & Crime Commissioner Lincolnshire tax requirement	12,815
85,813	Total cost met by Council Taxpayers	88,424
141,853	Population	142,424
£604.94	<b>Total cost per head</b>	£620.85

## What does your Council Tax pay for?

### Average Council Tax (Band D)



\*SEAs Special Expense Areas are a mechanism to charge elements of Council Tax to a specific area

## Budget boost for communities and businesses

This year's budget strikes a careful balance, reflecting that residents and businesses have had a tough year, but that this has meant an increased demand for council support and services.

It also recognises the need to invest in the projects that will aid our county's recovery.

## Spending where it's needed

Overall the council will spend £1,433m on a range of vital services in 2021/22.

### New spending includes:

- £12.3m for road maintenance, in light of a reduction in highways funding from government
- £12m to support small local businesses
- An additional £200,000 for flood response

## Infrastructure investment

- An extensive programme of expansion and improvements to special schools

- Renewal and replacement of fire service vehicles and equipment
- New extra care housing
- Maintenance and improvement of rural roads
- Relief roads for Grantham and Spalding

## Council tax

The authority's funding comes from a combination of council tax, business rates and government grants.

Although the government is allowing up to a 5% increase in council tax rates this year, the county council is limiting this to a 1.99% rise.

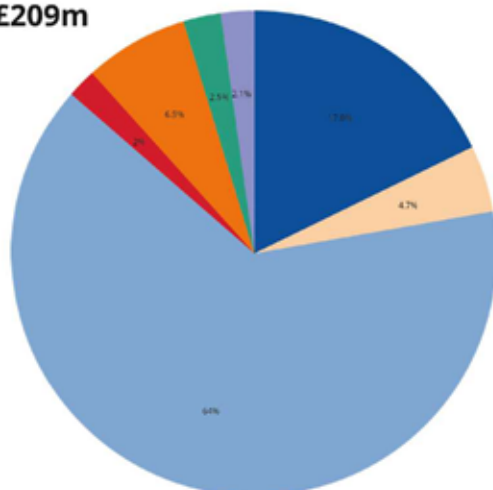
The increase is shown on your bill and will generate an extra £6.193m for the council.

For a property in council tax band A, the increase would be the equivalent of an extra 34p per week.

Lincolnshire is still expected to have one of the lowest council tax rates of all 26 English shire counties.

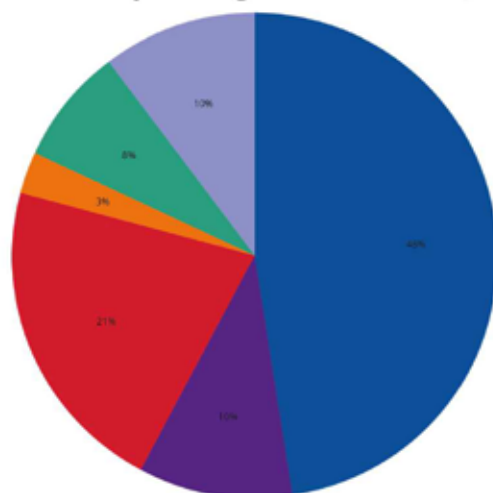
## 2021/22 Capital Investment £209m

- Schools £37m, 17.8%
- Place - Communities £9.78m, 4.7%
- Place - Highways £133.55m, 64%
- Fire & Rescue and Emergency Planning £4.2m, 2%
- Commercial - Property and ICT £14.38m, 6.9%
- Other budgets £5.2m, 2.5%
- Other services £4.39m, 2.1%



**Other Services includes:** Children's services and ICT within Commercial.

## 2021/22 Spending on Services £1,433m



- Schools £684m, 48%
- Children's Services £146m, 10%
- Adult Care £305m, 21%
- Capital Financing charges £42m, 3%
- Place £111m, 8%
- Other services £145m, 10%

**Children's Services includes:** Children's Social Care and Children's Education.

**Adult Care and Community Wellbeing includes:** Adult Frailty & Long Term Conditions, Adult Specialities, Public Health & Community Wellbeing.

**PLACE includes:** Communities, Greater Lincolnshire Local Enterprise Partnership, Growth and Highways.

**Other Services includes:** Fire and Rescue & Emergency Planning, Resources, Commercial, Corporate Services, Other Budgets and Contribution to Reserves.

## Our share of the council tax

The table below shows the amount you pay towards Lincolnshire County Council's services. (This does not include the amounts you pay for district councils, parish councils or the Police and Crime Commissioner for Lincolnshire.

	Amount 2020/21	Amount 2021/22
Band A	£891.72	£909.44
Band B	£1,040.34	£1,061.01
Band C	£1,188.96	£1,212.59
Band D	£1,337.58	£1,364.16
Band E	£1,634.82	£1,667.31
Band F	£1,932.06	£1,970.45
Band G	£2,229.30	£2,273.60
Band H	£2,675.16	£2,728.32

## Flood defence

The Environment Agency is responsible for protecting people and property against flooding from sea and rivers. The majority of its funding comes from the Department for Environment, Food and Rural Affairs (Defra).

## Funding and Spending in 2021/22

2021/22	Spending £m	Income £m	Spending - Income £m	Cost per resident £
Children's Services	146.4	24.2	122.2	161.7
Schools	683.9	683.9	0	0
Adult Care and Community Wellbeing	304.9	155.7	149.2	197.4
Place	110.8	36.1	74.7	98.8
Capital Projects Charges	42.2	0.5	41.7	55.1
Other Services	141.8	26.8	115	152.2
<b>Total planned spending</b>	<b>1,430</b>	<b>927.2</b>	<b>502.8</b>	<b>665.2</b>
Contributions to/from reserves	2.6	0	2.6	3.5
<b>Budget requirement</b>	<b>1,432.6</b>	<b>927.2</b>	<b>505.4</b>	<b>668.7</b>
<b>Resourced by:</b>				
Business Rates Local Retention			-120.8	
Revenue Support Grant			-20.6	
Other grants			-44.4	
<b>County Precept</b>			-319.6	
<b>Total Funding</b>			<b>-505.4</b>	

**NOTE:** The use of a minus (-) in front of a figure shows that income has been received and therefore taken off total spending.

**Children's Services includes:** Children's Social Care and Children's Education.

**Adult Care and Community Wellbeing includes:** Adult Frailty & Long Term Conditions, Adult Specialities, Public Health & Community Wellbeing.

**PLACE includes:** Communities, Greater Lincolnshire Local Enterprise Partnership, Growth and Highways.

**Other Services includes:** Fire and Rescue & Emergency Planning, Resources, Commercial, Corporate Services, Other Budgets and Contribution to Reserves.

## Funding and Spending in 2020/21

2020/21	Spending £m	Income £m	Spending - Income £m	Cost per resident £
Children's Services	138.1	23	115.1	152.2
Schools	654.1	654.1	0	0
Adult Care and Community Wellbeing	293.4	143	150.4	199.1
Place	108	35	73	96.6
Capital Projects Charges	129.4	26.2	103.2	136.4
Other Services	50.1	1.9	48.2	63.8
<b>Total planned spending</b>	<b>1,373.1</b>	<b>883.2</b>	<b>489.9</b>	<b>648.1</b>
Contributions to/from reserves	2.7	0	2.7	3.6
<b>Budget requirement</b>	<b>1,375.8</b>	<b>883.2</b>	<b>492.6</b>	<b>651.7</b>
<b>Resourced by:</b>				
Business Rates Local Retention			-123.2	
Revenue Support Grant			-20.5	
Other grants			-34	
<b>County Precept</b>			-314.9	
<b>Total Funding</b>			<b>-492.6</b>	

The Secretary of State made an offer to adult social care authorities. ("Adult social care authorities" are local authorities which have functions under Part 1 of the Care Act 2014, namely county councils in England, district councils for an area in England where there is no county council, London borough councils, the Common Council of the City of London and the Council of the Isles of Scilly.)

The offer was the option of an adult social care authority being able to charge an additional "precept" on its council tax without holding a referendum, to assist the authority in meeting its expenditure on adult social care from the financial year 2016-17. It was originally made in respect of the financial years up to and including 2019-20. If the Secretary of State chooses to renew this offer in respect of a particular financial year, this is subject to the approval of the House of Commons.

# How your council tax will be spent on keeping your communities safe

*Police and Crime Commissioner Marc Jones and Chief Constable Chris Haward explain how the extra council tax raised this year will be invested in front line policing to keep you and your community safe.*



Lincolnshire's Community Safety, Policing and Criminal Justice Plan 2017-2021 sets out three challenges all of which are key to keeping us all safe across the County.:

- To make Lincolnshire Police financially stable – which in 2017 was all but out of reach
- To ensure that recruitment of new officers was prioritised to increase visibility, tackle crime and protect communities from harm.
- To create a force enabled with the best possible equipment and technology to better serve the public and drive down crime.

Those challenges have now been met and the force today is better resourced, better equipped and recruitment continues at a pace with 120 new officers in the last year alone.

Thanks to public support and willingness to back our police force coupled with prudent spending, financial difficulties have been staved off and investment in new technology, better services and more officers has been made.

In addition, commitment and money from the Government to increase officer numbers even further has enabled a focus on building a force with the capability to keep our communities safer still.

The future is looking bright but now is not the time to be complacent. Although there is much work to do the community and the force, working together, can take great pride in what has been achieved.

This year, once again the public have been unequivocal in their willingness to back moves to create a stronger local police force to keep them, their families, friends and neighbours safe



A robust consultation with the public was conducted at the end of 2020. receiving 3,243 completed surveys covering a range of policing, crime and Council Tax related questions. The full detail of the survey can be found at <http://bit.ly/PCCAnnualSurvey> 77% of respondents supported an increase significantly in excess of the one being levied.

The increase will deliver £2.9 million for policing and crime reduction (a rise of 20p to 26p a week for most households) and those funds will be invested into increasing Officer numbers further and initiatives to protect our communities.

Your £1 a month will directly deliver operations, staff and projects that stop crime and criminals, protect residents and workers from harm and help people in need.

\* The full detail of the survey can be found at <http://bit.ly/PCCAnnualSurvey>



**The extra money will be dedicated to:**

- 1. Additional recruitment of 60 Officers starting training in 2021 more than doubling the planned total of incoming Officers to 114.
- 2. Creation of a dedicated roads policing team to create a visible police presence on the county’s roads. The team will be tasked with denying criminals the use of our roads as well as preventing so many tragic deaths and serious injuries across Lincolnshire.
- 3. Establishment of specialist enforcement teams to drive down community crime in both urban and rural areas. The new dedicated teams will tackle crimes that can blight our communities such as burglary and vehicle crime. Issues such as ATM thefts, robbery, drug offences, specialist rural equipment thefts and the stealing of lead from our historic churches will all be tackled.
- 4. Equipping officers to tackle violent crime and criminals. More officers will be provided with tasers and the number of firearms response teams will be increased to better respond to serious incidents that pose the highest risks to our communities.
- 5. Improving intelligence gathering from the people who know their communities best – the public. Money will be invested in new technology which will give the public easier and simpler access to the police to report crime and answer questions.
- 6. Investment in raising awareness of and tackling scams and frauds which are the scourge of modern society. The scamsters are constantly finding new ways to part residents from their hard earned money and often their life savings. More will be done to tackle this challenging phenomenon.

Lincolnshire remains one of the lowest funded police forces in the country – spending less than almost any other area in the UK on policing – but continued support from the public through Council Tax and prudent investments in time saving and game changing technology and equipment have removed the immediate threats to financial sustainability.

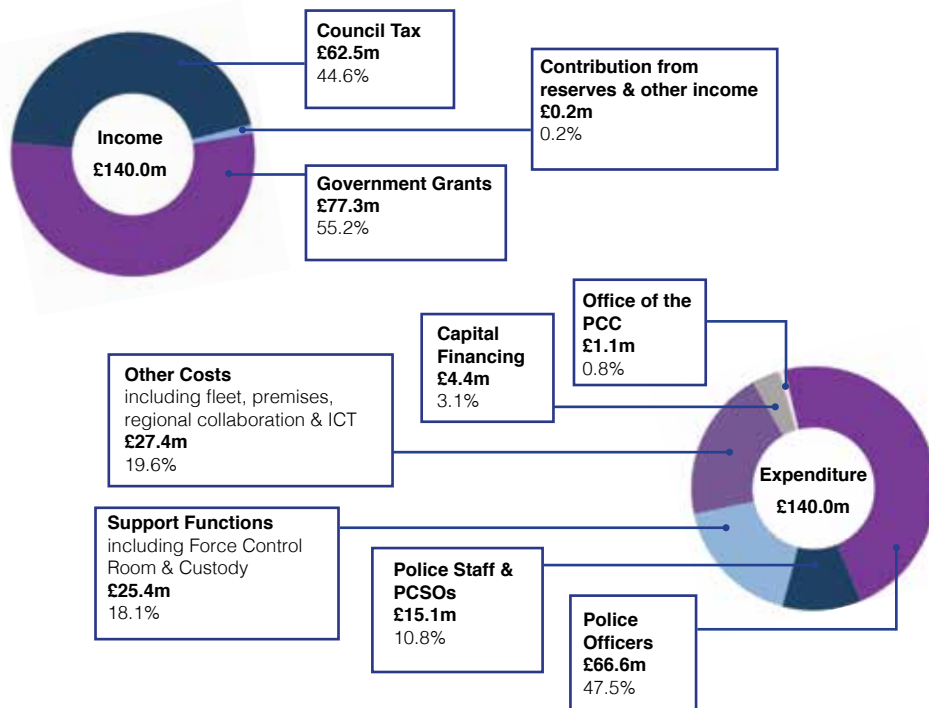
But development will continue.

Lincolnshire is now in the process of installing the most up-to-date command and control systems in the UK to ensure that when you need the police they are here to help. Our officers are equipped with cutting edge equipment that keep them in your community for longer and we are harnessing new technology better than ever to ensure the force is effective and efficient. This all means that an enhanced capability to prevent and fight crime will be delivered and that our communities will be safer than ever.

Last year a number of new projects were planned:

PROJECT	DELIVERED
Additional recruitment of officers in 2020	
New police vehicles fitted with the latest offender detection technology	
Enhanced dog unit	
More special constables	
Invest further in 101 and online reporting	

# What money do we receive and how is it spent?



Property Band	Cost last year (£)	Increase this year (£)	Cost this year (£)	Increase per week (pence)
A	167.58	9.96	177.54	19
B	195.51	11.62	207.13	22
C	223.44	13.28	236.72	26
D	251.37	14.94	266.31	29
E	307.23	18.26	325.49	35
F	363.09	21.58	384.67	42
G	418.95	24.90	443.85	48
H	502.74	29.88	532.62	57

## Town and Parish Precepts

Town or Parish	2021/22 Parish Precept	Band D equiv.	Town or Parish	2021/22 Parish Precept	Band D equiv.
Town and Parish Councils	£	£		£	£
Grantham	30,000	2.61	Harlaxton	19,500	55.80
Stamford	540,900	74.07	Heydour	5,000	31.95
Bourne	175,858	30.33	Honington	0	-
Market Deeping	246,633	109.80	Horbling	12,232	74.34
Allington	18,000	51.48	Hougham	3,485	39.51
Ancaster	27,300	46.89	Hough on the Hill	6,705	39.51
Aslackby & Laughton	4,800	43.20	Ingoldsby	5,130	42.30
Barholm & Stowe	0	-	Irnham	1,600	14.67
Barkston & Syston	12,500	50.40	Kirkby Underwood	2,820	34.74
Barrowby	42,000	57.87	Langtoft	24,500	32.31
Baston	15,502	25.38	Lenton, Keisby & Osgodby	250	3.78
Belton & Manthorpe	2,185	10.35	Little Bytham	4,200	36.00
Billingborough	15,000	30.78	Little Ponton & Stroxton	600	8.46
Bitchfield & Bassingthorpe	0	-	Londonthorpe & Harrowby without	31,000	18.72
Boothby Pagnell	750	11.79	Long Bennington	49,950	52.92
Braceborough & Wilsthorpe	2,885	20.25	Marston	5,420	35.73
Burton Coggles	200	4.95	Morton & Hanthorpe	16,500	19.80
Careby, Aunby & Holywell	750	9.54	Old Somerby	3,500	37.53
Carlby	8,469	40.32	Pickworth	1,500	19.71
Carlton Scroop & Normanton	8,900	70.56	Pointon & Sempringham	9,725	48.96
Castle Bytham	15,000	49.50	Rippingale	17,803	51.21
Caythorpe	30,039	57.06	Ropsley, Humby, Braceby & Sapperton	12,500	38.70
Claypole	20,014	38.97	Sedgebrook	11,970	80.37
Colsterworth, Gunby, Stainby & North Witham	36,618	48.42	Skillington	4,945	36.63
Corby Glen	12,000	29.43	South Witham	25,000	53.01
Counthorpe & Creeton	0	-	Stoke Rochford & Easton	4,750	56.16
Deeping St. James	156,919	63.99	Stubton	1,300	16.65
Denton	5,600	45.63	Swayfield	3,229	21.51
Dowsby	2,000	35.91	Swinstead	3,363	41.67
Dunsby	700	13.68	Tallington	7,501	22.32
Edenham	2,950	26.10	Thurlby	19,232	23.67
Fenton	1,000	17.01	Toft, Lound & Manthorpe	0	-
Folkingham	11,000	38.79	Uffington	3,000	9.63
Foston	11,000	49.50	Welby	1,571	18.45
Fulbeck	9,000	41.22	Westborough & Dry Doddington	2,500	17.46
Greatford	3,800	29.25	West Deeping	6,000	51.39
Great Gonerby	28,836	38.61	Witham-on-the-Hill	2,075	21.15
Great Ponton	9,439	76.05	Woolsthorpe	7,950	55.35
Haconby & Stainfield	1,630	8.64	Wyville-cum-Hungerton	400	19.53
<b>Sub Total</b>	<b>1,510,177</b>		<b>Total</b>	<b>1,848,883</b>	